

Stormy Day Review

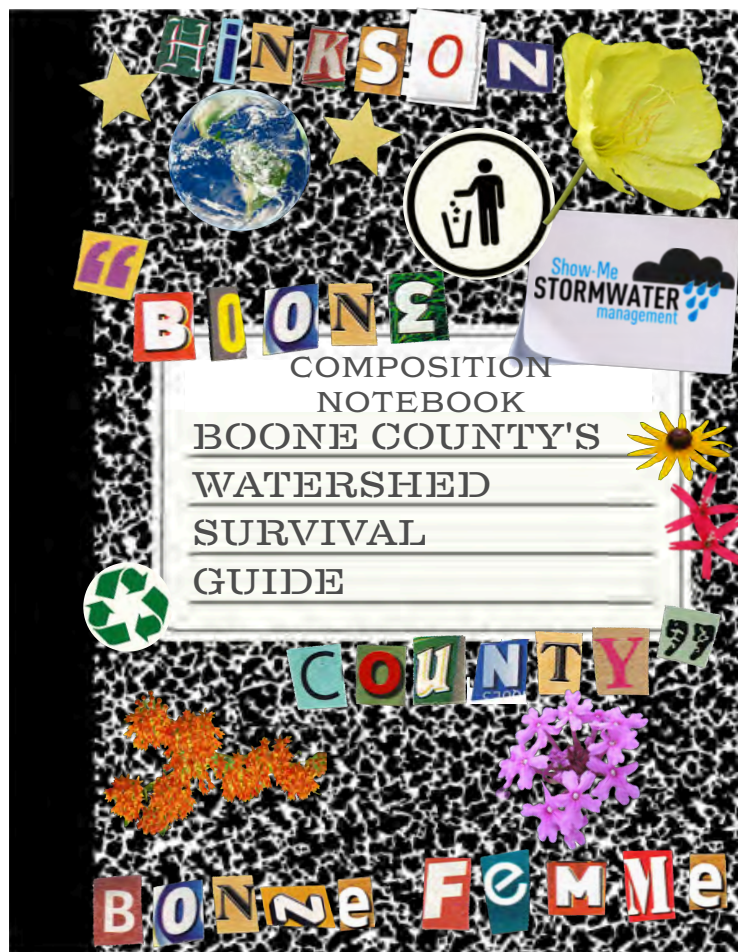


Upcoming Digital Series: The Watershed Survival Guide

The Survival Guide is a monthly social media series from Boone County's Stormwater Education team. Each post shares knowledge, practices, and resources on topics ranging from gardening and waste management to organizations, involvement opportunities, and events.

With some artistic flourish, our goal is to inspire Boone County residents to reflect on their relationship with the land we all live on, and to encourage a deeper sense of stewardship of our environment.

Coming soon to our Facebook page or sign up through our contact list.
<https://forms.office.com/g/Hcd0P4cetU>



Salt Smart!

Salt is highly effective at preventing ice formation. For a 20-foot driveway, just one mugful (12 oz) of road salt is sufficient. You don't need to hear "the crunch" for salt to be effective; it lowers the freezing point of water, making it easier to remove snow and ice. Using more salt than necessary does not accelerate melting or eliminate the need for plowing or shoveling.

www.helpthehinkson.org/salt-smart.asp

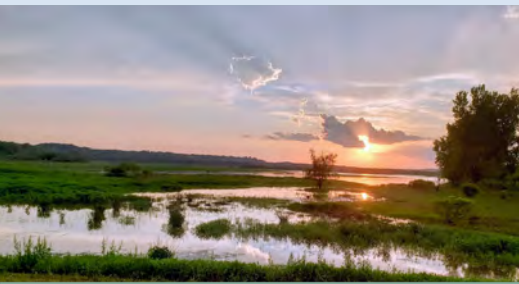
Greater Bonne Femme Watershed Return on Environment Study Shows Significant Financial Impact for Residents

Open spaces such as farmland, public parks, trails, and natural habitats in the Greater Bonne Femme Watershed generate over \$836 million each year in savings, earnings, and avoided costs. This figure comes from the Return on Environment Study, which examines the value of natural resources, ecosystem services, and community sentiment, converting these benefits into monetary values.

The Return on Environment Study supports the Boone County Master Plan's objective to guide future development in Boone County, providing a more balanced approach between growth and the preservation of farmland, rural character, and natural areas.



\$363 Million
Recreational Benefits



\$765 Million
In Preventing Flood
Damage



\$11 Million
Economic Tourism
Spending



\$460 Million
Avoided Healthcare and
Workplace Cost



\$2 Million
Gained in Tax Revenues
from Tourism



100+ Jobs
Supported by Tourism



\$20,000
Added Property Value

The findings from the Return on Environment Study will help shape the development of the Watershed Management Plan for the Greater Boone Femme Watershed, which outlines a path forward for restoring and protecting water resources within the Greater Bonne Femme Watershed for future generations.

Return on Environment Study for the Greater Bonne Femme Watershed

Greater Bonne Femme Watershed

The Greater Bonne Femme Watershed (GBFW) encompasses an area from southern Columbia to northern Ashland and extends to the Missouri River. The watershed is home to many notable features, including Rock Bridge Memorial State Park, Three Creeks Conservation Area, Outstanding State Resource Waters, caves, and agricultural lands.

Return on Environment Study (ROE)

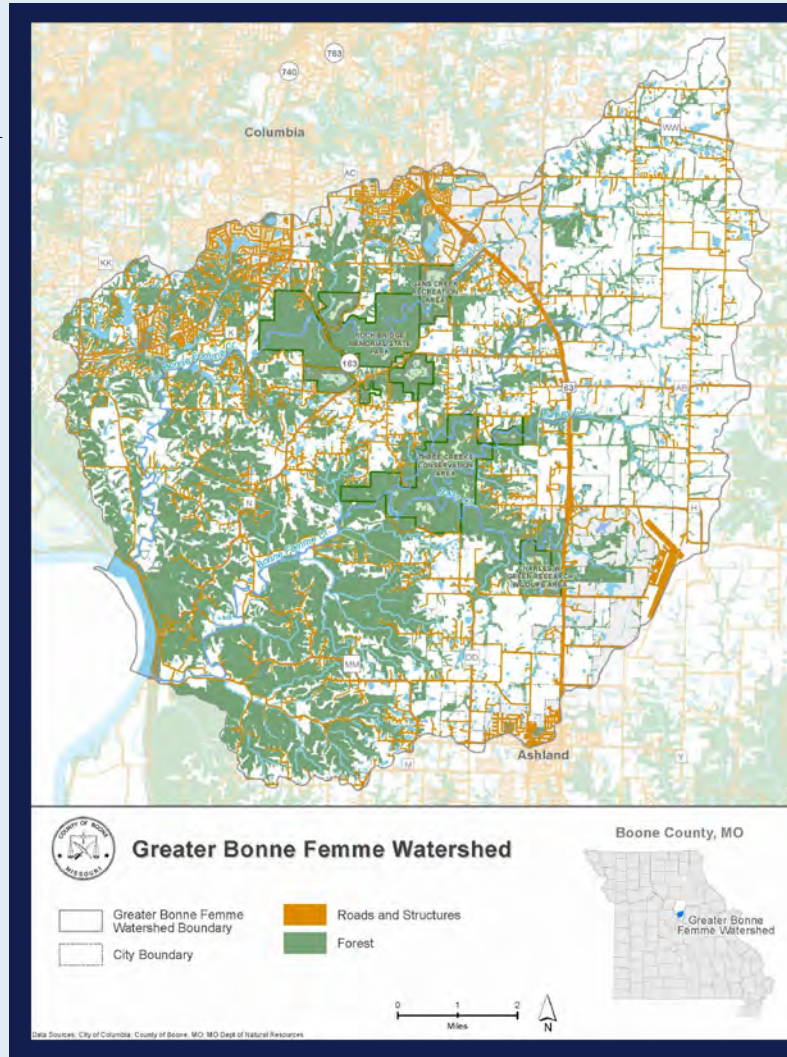
The Return on Environment Study (ROE) estimates the current value of ecosystem services and natural resources within the Greater Bonne Femme Watershed.

The ROE doesn't aim to replace the emotional value we attach to nature. Instead, it assigns monetary value to natural services, creating a shared language for broader understanding. This tool will help guide decisions on land use, economic growth, safety, and utility costs, influencing the well-being of future generations by revealing the hidden value in our environment.

Increasing and Maintaining the Return on Environment

To ensure the long-term health of the GBFW, public surveys and stakeholder feedback informed essential conservation practices. These practices aim to preserve watershed benefits, protect natural resources, and promote ecological balance. Key practices include:

- Planting Native Plants
- Restoring and Protecting Wildlife Habitats
- Regenerative Agricultural Practices
- Maintaining On-Site Wastewater Systems
- Community Engagement



Explore the Return on Environment Study and discover the Greater Bonne Femme Watershed Initiative by checking out

Cavewatershed.org



You Are Invited To Join

Earth Day

Art Contest



Boone County students are invited to showcase their creativity and love for the environment in the Earth Day Art Contest, sponsored by the City of Columbia, Boone County, and the University of Missouri – Columbia.

THEME FOR ARTIST

“HOW THE ANIMALS, PLANTS, AND NATURE IN BOONE COUNTY MAKE YOUR LIFE BETTER OR MORE FUN.”

Submission Due
Dec. 15, 2025

**WINNERS WILL RECEIVE
A \$30 GIFT CARD!**



For Artwork Guidelines and
more information go to,



[www.como.gov/sustainability/
earth-day-art-contest/](http://www.como.gov/sustainability/earth-day-art-contest/)

Order A Storm Drain Marker

Storm drains have a direct impact on our waterways, making it essential for everyone to understand how the storm drainage system works and to remember that only rain should go down the storm drain.

By marking your local storm drains, you help raise awareness about stormwater pollution and contribute to keeping our water clean for everyone! Remember, our storm drains are just for rain. Rainwater flows directly into our streams and rivers, so please do not throw trash or debris into storm drains or ditches. Protect our local waterways.

Sign up today: And we'll send you a bright blue and green "NO DUMPING" marker for the drain on your street!

<https://www.showmeboone.com/stormwater/marker/>



Quick Quiz

Take this quick quiz at

<https://forms.office.com/g/Nd4GUdDVST>, or email them to

Stormwater@boonemo.gov with your answers by

DEC 15. Participants can win a Winter Gift Package!

1. How much salt should you use to de-ice pavement?
2. How would more greenspace benefit you economically?
3. When are submissions due for the Earth Day Art Contest?
4. Why should you mark stormdrains?

Progress in Sustainability Award.

Boone County Stormwater Educator Michele Woolbright Hickman has been honored with the 2025 Missouri Progress in Sustainability Award.



As Boone County's Stormwater Educator, Michele collaborates with student groups, community partners, industry professionals, and multiple agencies to promote environmental stewardship and best management practices. She currently leads the Salt Smart: Safe Streets, Healthy Streams campaign, an initiative focused on raising awareness about salt pollution and encouraging practical solutions to reduce chloride impacts on local waterways.

Michele also spearheaded Boone County's Inaugural Creek Week, a week-long series of educational, recreational, and volunteer events designed to highlight the importance of protecting local water resources and the Greater Boone Femme Watershed. Through hands-on activities, family-friendly outings, and volunteer opportunities, Creek Week encouraged community members to connect with the outdoors and take part in conservation efforts close to home.