

## Missouri Explorer Campaign

Explore Boone County and Missouri Parks in a whole new way! Join the Missouri Explore campaign using the free Agents of Discovery app, the secret agency dedicated to learning and playing outdoors -think Pokemon Go for parks and education.

Perfect for people looking to spend time outdoors and learn about the world, the Missouri Explorer campaign will run until **October 31st, 2023**. Bass Pro Shops, Wonders of Wildlife, U.S. Forest Service, Missouri Department of Conservation, Boone County, Ancient Ozarks Natural History Museum, Dogwood Canyon, and Jefferson City Parks and Recreation have come together to get people exploring, learning, and having fun engaging with their communities.

**How to Play:** Anyone can join! Downloading the free Agents of Discovery mobile app and find Missions near you. No data or WiFi is required to play a Mission once it has been downloaded.

There are sixteen in-person locations across Missouri and six Play-At-Home opportunities. In Boone County, you can explore the Boone County Courthouse Plaza, and adventure to the 3M Flat Branch-Hinkson Creek Wetlands Trail.

Download your Missions, log in to play, and you'll be entered to win cool prizes!

**Prize Opportunity:** The Campaign includes amazing prizes to reward players or "Agents" who participate. Once an Agent completes a Mission, they'll earn a lanyard and a player card. Receive a Missouri Explorer Patch and be entered into a raffle by completing three Missions. For every three Missions you complete, you earn a raffle entry to win tickets to Sky Zone, Wonders of Wildlife National Museum and Aquarium, Dogwood Canyon Nature Park, Springfield Discovery Center, Arabia Steamboat Museum, and St. Louis Botanical Gardens.



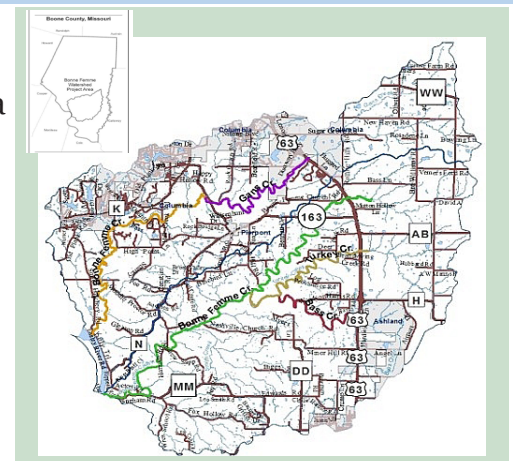
## Greater Bonne Femme Watershed

The Greater Bonne Femme Watershed (GBFW) is home to some of the most unique natural resources in central Missouri. Located within Boone County, the GBFW headwaters begin on the south side of Columbia and the north side of Ashland. Since 2012, there have been six stream segments in the GBFW on the Clean Water Act 303(d) list of impaired waters for exceedance of E. coli water quality standards.

Boone County and project partners, including local government, state and federal agencies, nongovernmental organizations, and local landowners, initiated the current GBFW project to develop a watershed-based plan that contains EPA's nine critical planning elements for Bonne Femme and Little Bonne Femme subwatersheds.

The plan was developed to help restore and protect water quality in the watershed by identifying pollutant sources and best management practices to be implemented, setting reachable goals and a timeline for implementation projects, and establishing an evaluation and monitoring program.

The Greater Bonne Femme Watershed-Based Plan was approved by the US Environmental Protection Agency and the Missouri Department of Natural Resources this summer. The plan can be viewed on [Cavewatershed.org](http://Cavewatershed.org). Please stay tuned for updates to this website as we move forward with plan implementation and opportunities for public input for the implementation phase of the Watershed-Based Plan.





# Chloride Task Force Report



The Hinkson Creek Collaborative Adaptive Management process, established the Chloride Task Force, which is a collaboration of local stakeholders from private businesses, workers' compensation insurance, academia, and local government. The purpose of this task force was to understand how and where chloride is used in the community, potential environmental impacts, and options for mitigating those impacts while maintaining public safety.

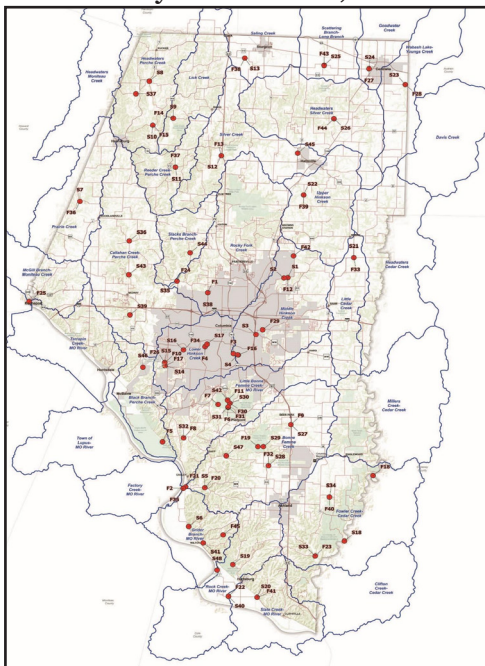
Chloride occurs naturally in lakes and streams, providing many organisms with natural levels needed to carry out essential life functions. However, elevated chloride concentrations can severely impact freshwater ecosystems and aquatic habitats, increasing water's corrosivity. Chlorides also alter soil composition, slow plant growth, damage vehicles, enter groundwater, and weaken concrete, brick, and steel infrastructure.

Members volunteered their time to work with community leaders to understand ice removal and identify systemic chloride use and its potential effects on the environment. The Chloride Task Force worked together to study the driving factors for chloride use and how chloride-based deicers work, application methods, deicing alternatives, and the impacts to Hinkson Creek from chloride-based ice-melt.

You can read the full report, which details strategies to address chloride, at [helphethinkson.org](http://helphethinkson.org)

## Countywide Water Quality Sampling

In partnership with the Missouri Department of Agriculture and the University of Missouri, Boone County Stormwater staff collected 45 water samples in the fall of 2022 and 48 in the spring of 2023 from streams around Boone County and the Missouri River.



Sampling Locations, fall, 2022 (denoted F#) and spring, 2023 (S#):

The Boone County GIS Department was instrumental in the project watershed analysis, developing an interactive web map to display sampling locations, watersheds for those locations, land use/land cover information, and chemical sampling results.

Explore the map and the results of the Countywide Water Quality Sampling Project on the stormwater website at [www.showmeboone.com/stormwater/mda-sampling.asp](http://www.showmeboone.com/stormwater/mda-sampling.asp)

## Event Calendar

### September 12th

Big Muddy Speakers Series

*Les Bourgeois Bistro*

7:00-8:30 PM

### September 14th

Boone County Ready Festival

*Stephens Lake Park*

4:00-8:00 PM

### September 30th

CAFNR Showcase

*South Farm, New Haven Road*

10:00 AM- 4:00 PM

### October 28th

Fall Monitoring Blitz

*Rock Bridge Memorial State Park*

9:00 AM-12:30 PM

## Win a Water Bottle & Gift Card

You have two chances to win a water bottle and \$10 gift card to Love Coffee!

- First, play an Missouri Explorers Mission! Then email [Stormwater@boonecountymo.org](mailto:Stormwater@boonecountymo.org) by September 15th to be entered for the prize.
- Second, you can take this quick quiz at <https://forms.gle/M3QvEC3ym4WVx21u5> or email your answers to [Stormwater@boonecountymo.org](mailto:Stormwater@boonecountymo.org) by September 15th to be entered for the prize.

1. What event is on October 28th? \_\_\_\_\_

2. When does the Missouri Explorer Campaign end?

- A) November 13th    B) September 7th    C) October 31st