



OEM CHRONICLE

Boone County
Office of Emergency Management



JUNE

PET PREPAREDNESS MONTH

Pets are important members of your family! Which means they should also be included in your family's emergency plan.

This month, we will talk about the steps you can take to make your whole family Boone County Ready!

PET PREPAREDNESS

It is critical to consider pets in your family emergency plan for a disaster. While 9 out of 10 pet owners say they would evacuate with their pets, many do not have a plan in place to do so (ASPCA, 2021). This can lead to dangerous scenarios in which pets are left behind, or the family does not evacuate at all, leaving them in harms way.

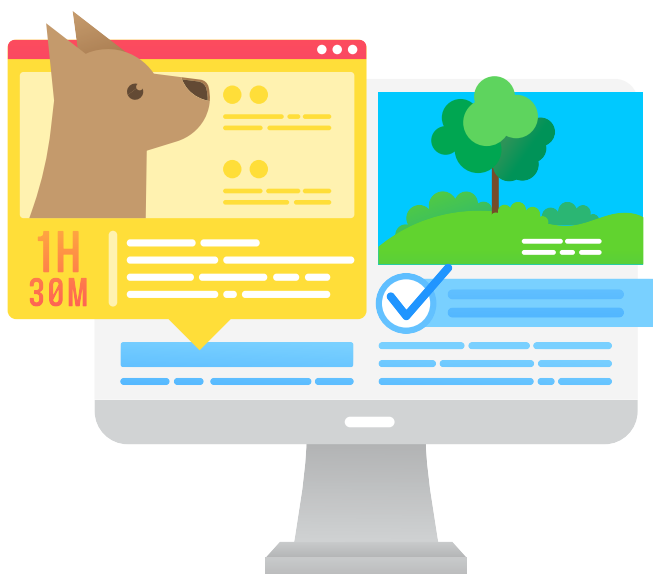
For example, 44% of survivors who chose to not evacuate for Hurricane Katrina did not do so because they didn't want to leave their pets behind (AIDR, 2015). Here are some small steps you can take to prepare for the worst case scenario.



Make a Plan

Having a plan in place is the best way to prepare yourself and your pets. You will likely encounter less difficulty and stress when you need to make a decision during an emergency. Some important considerations include:

- **Have an evacuation plan for your pet.** Public shelters and hotels often do not accept pets, so it is important to designate a safe place where you can take your pets before a disaster happens.
- **Create a buddy system.** Partner up with friends, neighbors, or relatives to make sure someone can care for your pet if you are unable to do so.
- **Update your pet's microchip.** Have you changed your phone number or moved since your pet joined the family? take a moment to update your contact information. If you are unsure who the chip is registered with, ask your veterinarian for more information.



PET PREPAREDNESS

Build a Kit

After you make a solid plan, you can take steps to gather the essentials for your pet. Items to include in your pet's emergency kit include:

- Food
- Water
- Medicine
- First aid kit
- Collar with an ID tag and a backup leash/harness
- A crate, travel bag, or carrier
- Litter and litter box, paper towels, plastic trash bags, pet shampoo/conditioner, etc.
- A picture of you and your pet together (in case you get separated)
- Comfort items - favorite toys, treats, and blankets



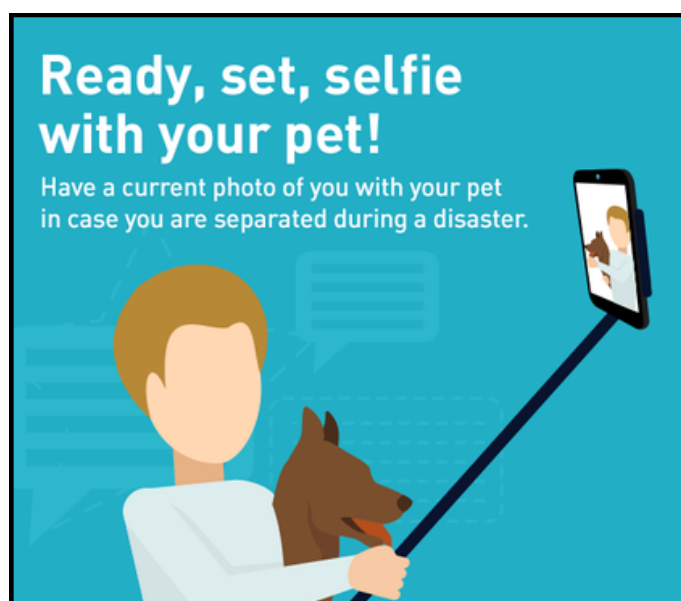
Stay informed

Stay updated on the latest weather information by following your local forecast. Always bring your pets indoors at the first sign of a storm. If local officials recommend evacuation, always evacuate with your pets.

You can also sign up for Boone County Ready Alerts to receive notifications and emergency alerts on our website or at <http://bcoem.info/49hYW17>

References & Further Reading:

- (ASPCA, 2021)
<https://www.aspcapro.org/news/2021/09/22/aspcapro-survey-shows-83-pet-owners-are-impacted-disasters-fewer-half-have>
- (AIDR, 2015)
<https://knowledge.aidr.org.au/resources/ajem-apr-2015-the-preparedness-and-evacuation-behaviour-of-pet-owners-in-emergencies-and-natural-disasters/>
- Ready.gov
- aspcapro.org



TRAINING & EXERCISE

Training and exercising plans that are in place helps build preparedness across the county. Exercises are conducted to ensure procedures and policies are up to date with the best practice. Furthermore they give our community stakeholders an opportunity practice and improve the plan that is in place.

We started out the month with a CERT training at the Nature Center on Orienteering taught by our awesome partners at MDC. We then facilitated an After Action Review (AAR) meeting with partner agencies involved in the Conley Road Walmart Active Assailant Incident.

Finally, We had a Wide Area Search and Rescue Orienteering Drill with CERT at Rockbridge and worked with BCARES on their HAM Radio Field Day in the same location.



Interested in joining Boone County's Community Emergency Response Team (CERT)? Register through our website or email Matthew Brown, CERT Program Manager, at mbrown@boonecountymmo.org for more information.



Photo: Boone County CERT members practicing orienteering skills.

OUTREACH

Outreach is critical for building resilience within Boone County. Our goal is for every citizen to be prepared for hazards that can affect our community including flooding, tornadoes, and earthquakes!

Our team attended a couple of events this month. We had the opportunity to attend a family event at Rusk Rehabilitation Hospital and the Juneteenth celebration at Douglas park.

At these events, our staff connected with our community by providing important disaster preparedness tips and handing out prizes!



Photo: Deputy Director Waller and Specialist Lewin staffed an outreach event at Rusk Rehabilitation Hospital, talking about the importance of disaster preparedness.



Photo: Director Kelley and elected officials take part in the Juneteenth parade.

Photo Credit: Charles Dunlap/Columbia Daily Tribune



Photo: Director Kelley, Specialist Johnson, Deputy Director Waller (not pictured), and Specialist Lewin (not pictured) connected with the community at the Juneteenth celebration in Douglas park.

HERRICANE BOONE COUNTY



In partnership with the Institute for Diversity and Inclusion in Emergency Management (I-DIEM), our office has been accepted to be a participative host for the HERricane camp in Boone County.

HERricane is a camp for young women interested in a career in emergency management, public safety, and government. Campers will learn about disaster preparedness, develop leadership skills, and meet leaders in government from local, state, and federal agencies.

For more information, visit
www.showmeboone.com/herrricane



STAFF UPDATE

Chris Kelley, Director

This month, Chris attended the "I Love You Guys" reunification train the trainer class in Springfield, MO, and participated in the cybersecurity tabletop exercise facilitated by FEMA.

He also connected with the community at the Juneteenth event, attended a Recovery & Logistics meeting, and supported Chris Lewin in the Disaster Recovery Stakeholder Meeting

Chris Lewin, Mitigation & Recovery Specialist

Chris lead the Disaster Recovery Stakeholder meeting. He also is developing the inaugural HERRricane program.

Chris also attended the "I Love You Guys" reunification train the trainer class in Springfield, MO, and participated in the cybersecurity tabletop exercise.

Jake Waller, Deputy Director

This month, Jake participated in a planning session for an upcoming multi-agency exercise, staffed an outreach booth at the Rusk Rehabilitation & Juneteenth event, and took an updated Intermediate ICS for Expanding Incidents course.

He also taught CPR to county employees and gave a tour of the Emergency Communications Center for 4th grade students from Sturgeon.

Matt Brown, Training & Exercise Specialist

This month, Matt facilitated an After Action Review for a severe weather and active assailant incident that occurred earlier in the month. He also attended the "I Love You Guys" reunification train the trainer class in Springfield, MO, and participated in a cybersecurity tabletop exercise.

Bart Messer, Administrative Assistant

Bart worked on building active assailant kits with Della. He also answered phone calls to the ECC, updated our EOC computers, checked the OEM vehicles biweekly, and paid the bills.

Kraig Johnson, Planning & Preparedness Specialist

Kraig continues to update the Emergency Operations Plan for a disaster scenario. He also worked with local partners to create the Incident Action Plan for the 4th of July - Fire in the Sky event at Stephens Lake Park.

Kraig also attended the "I Love You Guys" training and participated in the cybersecurity tabletop exercise.

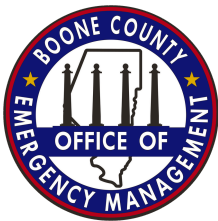
Della Luster, Administrative Coordinator

Della built active shooter kits with Bart. She also reconciled our purchasing cards and made sure that everyone in the office got paid!

ENGAGE WITH OUR OFFICE

The Boone County Office of Emergency Management OEM Chronicle contains preparedness information to help those who live, work, and visit Boone County become better prepared for emergencies.

If you have any suggestions about content to add to the Chronicle, please don't hesitate to reach out by emailing **EM@boonecountymo.org**.



Come join almost 7,000 of your friends and neighbors and follow our socials. We are: **@BooneCountyOEM**



For weather information, monthly giveaways and preparedness tips please visit: **@boonecountyready**

Sign up for Free Boone County Ready Alerts
Get weather, emergency, and special-event text and email alerts.

Emergency Alerts:

Text BCALERT to 67283 to opt-in to receive emergency notifications.

Preparedness Notifications:

Text READY to 67283 to opt-in to non-emergency preparedness messaging.



(573) 554-7900



2145 E County Drive Columbia, MO 65202