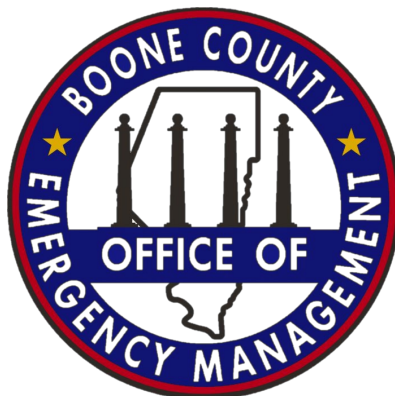




Boone County  
Office of Emergency Management  
2017  
Annual Report



## Message from the Director

To the Residents of Boone County:

As we look back on 2017 and toward 2018, resiliency is the key term for our community. It is more than the newest buzzword; resiliency means that we are prepared for disasters before they happen, so we can quickly recover after the community is impacted.

This document outlines our progress and future objectives toward making our community safer against potential disasters.

Working closely with our stakeholders, we have improved our collaborative relationships to better respond to and recover from disasters. We meet several times per year with our colleagues, emergency service providers, universities/colleges, and nonprofit organizations to plan joint training courses and exercises, and share emergency management information.

We continue with recovery efforts from the 2017 April-May flooding. The long process of working with local stakeholders, the State Emergency Management Agency (SEMA), and the Federal Emergency Management Agency (FEMA) on damage assessment and reimbursement is ongoing.

In 2018, our largest effort will be evaluating the threats and risks that most effect this community. Boone County Office of Emergency Management (BCOEM) will use the 2015 updated Mitigation Plan to guide this effort.

The strength of our preparedness comes not only from our own planning efforts, but also through the resiliency and preparedness of our community members - from individual households to neighborhood associations. I highly encourage you to visit the BCOEM website at [www.showmeboone.com/BCOEM](http://www.showmeboone.com/BCOEM) for more information on staying prepared and ready. Thank you for your support. Together, we can have a safe and prosperous 2018!

Sincerely,



Terry L. Cassil  
Director  
Boone County Office of Emergency Management

# Table of Contents

Message from the Director.....	1
Table of Contents.....	2
Emergency Management in Boone County.....	3
Organizational Chart.....	5
Community Hazards.....	7
Disaster Recovery.....	8
History of Disasters and Emergency Incidents.....	9
Partner and Stakeholder Collaboration.....	10
Strategic Plan.....	11
Emergency Operations Center.....	12
Training and Exercises.....	13
Community Engagement.....	17
Public Information.....	18
Severe Weather Monitoring & Warning.....	19
Emergency Operations and Planning.....	20
Resource Coordination and Management.....	22

# Emergency Management in Boone County

## Community Profile

Boone County encompasses approximately 685 square miles and sits at an altitude of 940 feet above sea level. The County lies along the banks of the Missouri River with both urban and rural areas and thus a Wildland Urban Interface (WUI) area which is at times pronounced. Boone County is made of a vibrant and diverse community with citizens in both urban and rural environments, at times this poses a unique disaster planning and response challenge. Boone County has experienced, and is threatened, by a wide array of natural disasters, such as hail, floods, wildfires, tornados, winter storms and technological emergencies, such as dam failures and hazardous material incidents. Planning scenarios must also include the possibility of terrorist and criminal acts.



## Overview

The Boone County Office of Emergency Management (BCOEM) has developed a comprehensive emergency management system which has enabled the County to effectively protect its residents from the wide range of hazards inherent to the community. The success of this system is built on an all-hazards approach to emergency management and strong partnerships within the emergency response and recovery community. This community consists of federal, state, and local partners; voluntary and other non-governmental and community-based organizations; and the private sector, such as utilities and medical services providers.

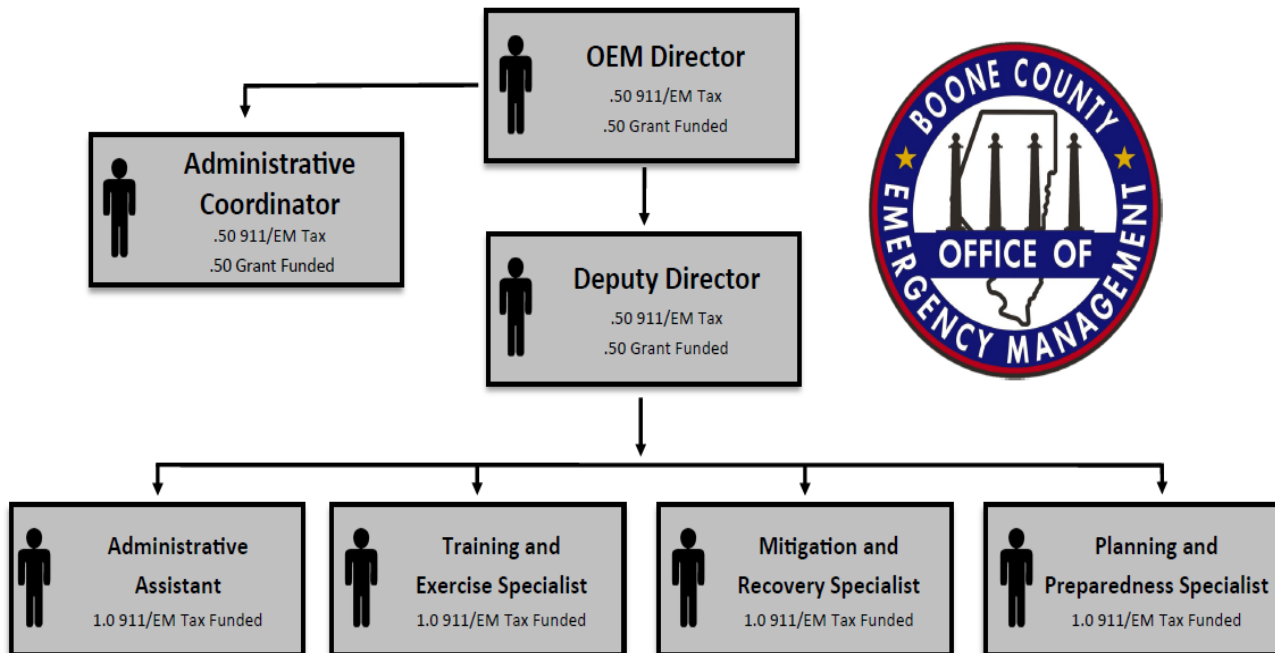
## Office of Emergency Management Services

- Mitigation of and planning for large-scale, all-hazards emergencies and disasters.
- Coordination of resources during large-scale emergencies and disasters.
- Development, maintenance, and execution of the County's Emergency Operations Plan.
- Liaison to local, county, state, and federal agencies and departments.
- Coordination of multi-jurisdictional exercises and training.
- Management of resources to assist responders and the affected population.
- Coordination of recovery operations post disaster or emergency.
- Conduct community education, outreach, and training.

# County of Boone

## Office of Emergency Management

### Organizational Chart



# Community Hazards

## Natural Hazards

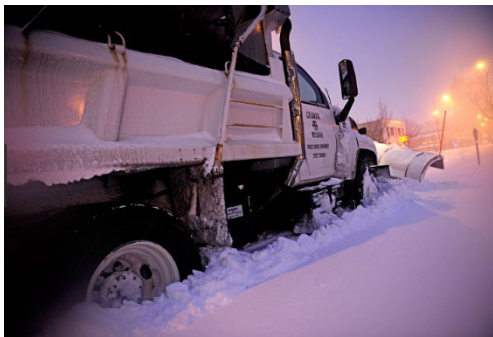
Boone County's geographical location and environmental diversity makes the County vulnerable to a wide variety of natural hazards. The hazards most likely to result in significant impact to the citizens of Boone County include floods, severe weather, earthquakes and drought.

### Flood

Flooding is among the most damaging hazards to affect Boone County. The presence of the Missouri River along the west and southern borders of the county, and the abundance of streams, smaller rivers, and low-lying areas adjacent to waterways makes many areas of the County extremely vulnerable to various types of flooding. Damage from flooding in April and May of 2017 led to Boone County's inclusion in a Presidential Declaration of Major Disaster for Missouri, the result of which will make federal funding available to the county and its jurisdictions to reimburse a considerable portion of recovery expenses.



### Severe Weather



Boone County is subject to frequent severe weather events including thunderstorms, hail, floods, high winds, tornadoes, lightning, heavy snow, ice storms and extreme heat. These phenomena are common, dangerous, and often costly occurrences, and can be expected almost every year. Every jurisdiction in Boone County is highly vulnerable to these hazards. Both human life and the built environment are at risk. Historically, the impact on the built environment has been quite costly from past events, resulting in several state and presidential

declarations of disaster.

### Drought

While all of Boone County is potentially at risk for drought, the unincorporated agricultural areas of Boone County are most at risk. Drought can mean crop failure in these areas, resulting in immediate, and potentially severe, economic loss. Drought also increases the likelihood and severity of natural cover fires which may threaten crops, livestock, residential and business structures and life safety.



## **Human Caused Hazards**

Human caused hazards are threats to life safety and property originating from and caused by people, either inadvertently (from ignorance, accident, or negligence) or intentionally. Human-caused hazards for Boone County include hazardous material incidents and public health emergencies.

### **Hazardous Material Incident**

Hazardous material (HAZMAT) incidents are releases of solid, liquid, and/or gaseous contaminants from fixed or mobile containers either accidentally or intentionally, as with a terrorist attack. A HAZMAT incident is possible in a variety of locations and spatial extents. Some incidents, such as a fuel spill, can occur in small, contained locations with minimal impact. Others, such as the release of toxic chemicals, may occur from a small source, but with a large resulting spread. In addition to the primary release, explosions and/or fires may result, and contaminants can be extended far beyond the initial area.

Sources of hazardous materials include manufacturers, service stations, agriculture, healthcare and research facilities, and transportation routes. Hazardous materials are shipped daily on area highways and railroads, providing ongoing exposure of the County to potential risk.

Due to the continuous presence of hazardous materials being transported or stored in and around Boone County, HAZMAT incidents of varying magnitudes are considered likely future events.

### **Public Health Emergency**

Public health emergencies straddle the divide between natural and human-made hazards. Because human activity greatly influences infectious disease spread, it is included here. There are any number of potential situations which can give rise to a public health emergency, including communicable disease epidemic; radiological, chemical or biological terrorism; hazardous material release; nuclear incident; water or food contamination; extended utility disruption; and cascading effects from any other hazard.



The measure of severity of a public health incident is variable due to the wide-range of events which could trigger a potential emergency. The high probability of a public health cascading event evolving from another disaster complicates both response and recovery. In addition to direct impacts on life and existing structures, a public health emergency has the potential for large economic effects.

While the entirety of the population is vulnerable, Boone County is probably better prepared to meet a public health emergency than many locales, though a significant risk still exists. The potential impacts of a public health emergency are numerous, varied, dangerous, and continually evolving.

# Disaster Recovery

## Community Preparedness

BCOEM conducted several presentations with residents and community members to promote emergency preparedness and Smart911. These meetings provided presentations from BCOEM and Joint Communications staff about household and family preparedness, emergency kits, emergency communications plans and registering for Smart911.

## April/May Flood Recovery (DR 4317)

Because of the flooding that occurred in April and May of this year, Boone County was included in a presidential declaration of disaster - DR 4317 - on July 3<sup>rd</sup>, 2017. Boone County Public Works, Boone County Facilities Maintenance, City of Columbia Public Works, and the Missouri Department of Natural Resources sustained damages to roadways, bridges, and a dam resulting in nearly \$750,000. The declaration enables these agencies to receive 85% reimbursement from the state and federal governments for damage expenses incurred.



### Finger Lakes Dam

Finger Lakes Dam is a state regulated dam located at Finger Lakes State Park in north-central Boone County. The dam sustained significant damages, resulting in the largest dollar portion associated with this declaration. While the dam is maintained by the Department of Natural Resources, its residence in Boone County allowed the cost of the damages to be included to reach the threshold necessary to be included in the declaration.

### Jemmerson Creek Road

Project DR4317 is also included for eligible reimbursement to repair and provide mitigation actions to a damaged culvert on Jemmerson Creek Road to mitigate future repetitive loss due to the frequent flooding of Jemmerson Creek. The upgraded larger box culvert will allow for greater waterflow, provide protection against floating debris and prevent rapid clogging of the inlet.



## Centralia Storm 2016

July 7<sup>th</sup>, 2016 a strong thunderstorm moved through Boone County causing damage to trees, houses and infrastructure. The City of Centralia sustained the greatest damage, which left over 75% of the city without power, including the City's three nursing homes, City Hall and Centralia Fire Department #1. BCOEM staff supported the City's recovery efforts on scene and remotely through the coordination of meetings, partners and resources. Assistance included, but was not limited to, supplying generators and coordinating a feeding center through the American Red Cross. By July 9<sup>th</sup>, 2016 power was restored to all residents of Centralia and BCOEM assistance was no longer needed.





# History of Disasters and Emergency Events

<b>2017</b>	<ul style="list-style-type: none"> <li>• April 28-May 11 – Much of Missouri was impacted by severe storms bringing unprecedented amounts of rain creating wide-spread areal and flash flooding. Bridge and road infrastructure in Boone County was damaged, as was the Finger Lakes State Park dam. Resulting damage costs resulted in Boone County being included in a Major Disaster Declaration and becoming eligible for federal damage cost reimbursement.</li> <li>• A mid-January prediction of a serious ice storm set to impact Missouri – including Boone County - prompted the Office of Emergency Management to prepare for activation of the Emergency Operations Center. BCOEM staff equipped for 24-hour operations, with several personnel remaining in the EOC, and several more standing by to respond.</li> <li>• May 26-28 - Office of Emergency Management supported the Memorial Day Salute to Veterans Air Show by preparing a comprehensive event plan for all participating public safety and event agencies.</li> <li>• March 15-17 - Office of Emergency Management staff supported the Columbia/Boone County Department of Health and Human Services and the University of Missouri at an MMR Point of Dispensing (POD) at the University in response to a mumps outbreak. Planning staff created an Incident Action Plan for all entities involved, and provided administrative assistance during the event.</li> </ul>
<b>2016</b>	<ul style="list-style-type: none"> <li>• July 7 – Heavy rain and strong winds moved through the city of Centralia causing power outages and minor building damage. Emergency management staff maintained situational status, did damage assessment, and provided three generators for a feeding center at the city recreation center and to sustain two nursing homes.</li> <li>• Office of Emergency Management supported the Memorial Day Salute to Veterans Air Show, Fire in the Sky, the Boone County Fair, and Roots N Blues N BBQ by preparing comprehensive event plans for all participating public safety and event agencies.</li> <li>• Boone County Office of Emergency Management created January 1, 2016.</li> </ul>

# Partner and Stakeholder Collaboration

## Overview

The Boone County Office of Emergency Management takes a “Whole Community” approach to emergency management. Our strategic themes are to:

- Understand community complexity
- Recognize community capabilities and needs
- Foster relationships with community leaders
- Build and maintain partnerships
- Empower local action
- Leverage and strengthen social infrastructure, networks, and assets.

## 2016 Collaboration Highlights

### Emergency Management and Joint Communications

The Boone County Office of Emergency Management welcomes opportunities to collaborate not only with our immediate community partners, but those within the region and state as well.

The Emergency Management Director is currently serving as the vice-president for the Missouri Emergency Management Association, and assisting in that capacity with coordination of the State Emergency Management Conference. The Director will also be doing a presentation at the conference regarding best practices in EOC activation and operations.



Boone County BCOEM also attends Region F SEMA coordinator meetings and Regional Homeland Security Oversight Committee functions. Both functions provide educational opportunities, relationship building, and information about grants and other funding and resource availability.

The interaction with our emergency management partners regionally and statewide broadens learning opportunities for BCOEM personnel, and strengthens partnerships which may be called upon to support a major disaster response in Boone County.

## Strategic Plan

One of the goals of the Office of Emergency Management for the first quarter of 2018 is to create a 5-year strategic plan with the input of our disaster response and recovery partners. The plan is intended to be a roadmap that addresses internal growth in the Office of Emergency Management, while addressing planning needs at a county-wide level.

The development of a strategic plan expresses BCOEM's continued commitment to provide the best possible stewardship in making our community better prepared for, and resilient to, all hazards.

Communicating these strategic goals and incorporating them into the day-to-day activities of the agency with support from all partnering agencies will undoubtedly strengthen the County's disaster response capability.

Some of the key items to be addressed in the document include:

- Evaluating the threats and risks that most affect the community, along with gaps in resources and capabilities.
- Identifying capabilities in, and available to, Boone County to protect the community from all hazards.
- Improving the level of preparedness of emergency management and the community through training and exercise.
- Bolstering planning efforts through cooperative collaboration with community partners.

Companion strategic planning documents include the Boone County Emergency Operations Plan, Boone County Mitigation Plan, and Multi-Year Training and Exercise Plan.

The Boone County BCOEM strategic plan will serve as a framework to prioritize decisions and actions, optimize resources, and advance the emergency management program in our community. With the support of talented and dedicated staff, creative partners and committed leadership, we will continue to build on and maintain Boone County's path of increasing excellence.



**BOONE COUNTY  
EMERGENCY MANAGEMENT  
STRATEGIC PLAN**

Boone County Office of Emergency Management  
2145 County Drive  
Columbia, Missouri 65202  
Terry Cassil – Emergency Management Director

2018 Edition

# Emergency Operations Center

## Function

The Boone County Emergency Operations Center (BCEOC) is located inside the Emergency Communications Center located at 2145 County Drive in Columbia. 2017 marks the first full year of emergency management operations from this new location.

The Emergency Operations Center (EOC) provides a central location from which local government and partner agencies can provide interagency coordination and executive decision making in support of an incident response. Personnel of BCOEM

The role of the EOC is not to command or control on-scene incident response, but rather to coordinate and support the incident by collecting, evaluating and sharing information; establishing incident wide priorities and objectives; resource management; and providing logistical support to the event.



## Boone County EOC



The EOC is equipped with state-of-the-art technology to support the objectives of incident management in Boone County.

In 2017 response agencies and stakeholders participated in a series of EOC workshops and exercises developed by the Office of Emergency Management to orient the disaster response and recovery partners with operating in the new center within an Emergency Support Function (ESF) structure.

# Emergency Management Training and Exercises

## Overview

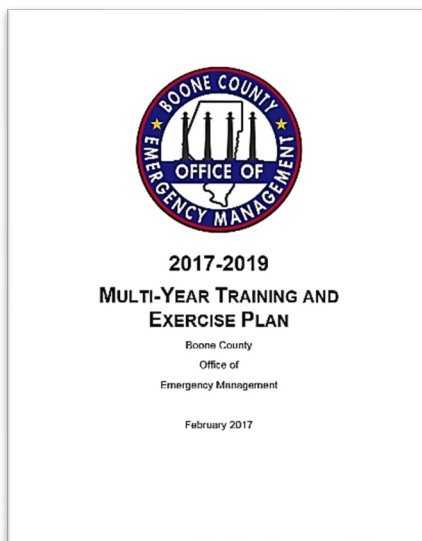
Training and exercises for emergency response are an integral part of community preparedness. Boone County BCOEM coordinates and participates in multiple activities every year. Training and exercises are specifically tailored to the responsibilities of the personnel involved as they pertain to emergency management. BCOEM adheres to the doctrine and guidelines established by the National Preparedness Goal, the National Incident Management System (NIMS), and the Homeland Security Exercise and Evaluation Program (HSEEP).

Exercises are designed to allow personnel to test and validate plans. Exercises allow for opportunities to bring together personnel from multiple agencies to simulate and test capabilities. Exercises can take many forms and are generally discussion-based or operations-based. Through exercises we can evaluate, test, and modify current plans to ensure that responding agencies understand their roles in emergency response.

The County has instituted a robust training and exercise program that fulfills training needs from first responders to policy makers. The BCOEM Training and Exercise Plan (TEP) is part of Boone County's strategy for emergency preparedness and is intended to provide the County with consistent training program information. BCOEM coordinates the delivery of training and exercises to facilitate the improvement of the County's ability to deliver specific capabilities for emergency operations.



## Multi-Year Training and Exercise Plan



BCOEM utilizes a coordinated preparedness strategy to strengthen its emergency preparedness response capabilities. Training and exercises play a crucial role in providing the organization with a means of attaining, practicing, validating, and improving its high-priority capabilities for emergency preparedness. The Multi-Year TEP coordinates training and exercise with community partners to reduce duplication of effort and over extension of resources.

BCOEM develops a Multi-Year Training and Exercise Plan every three years designed to improve county-wide coordination and disaster resilience. To achieve this, BCOEM participates annually in the State of Missouri, and Region F Training and Exercise Planning Workshops (TEPW), as well as, conducts a local TEPW with community partners.



## Training

BCOEM coordinated numerous training events during 2017 for both Boone County employees and local partner agencies. Incident Command System (ICS) and EOC management were the primary trainings offered.

2017 Training and Exercise Schedule											
Jan	Feb	Mar	Apr	May	Jun	Jul	Aug	Sep	Oct	Nov	Dec
<ul style="list-style-type: none"><li>• MU Vehicle Attack Tabletop Exercise (Jan. 23)</li><li>• G402 – Incident Command Systems (ICS) Overview for Executives &amp; Senior Officials (Jan. 23)</li><li>• NWS Storm Spotter Training (Feb. 23)</li><li>• ICS 300 Intermediate Incident Command System (Feb. 25-26)</li><li>• EOC Activation Workshop 1 (Feb. 28)</li><li>• EOC Activation Workshop 2 (Mar. 9)</li><li>• EOC Activation Workshop 3 (Mar. 28)</li><li>• 2017 Pipeline Exercise (Mar 16)</li></ul>			<ul style="list-style-type: none"><li>• LEPC TTX Exercise (Apr. 18)</li><li>• 2017 NUWAIX Exercise (Apr. 4-7)</li><li>• EOC Activation Workshop 4 (Apr. 11)</li><li>• EOC Activation Workshop 5 (May 11)</li><li>• Region F HCC Recovery TTX (May 15)</li><li>• 2017 Cyber Guard (May 23-25)</li><li>• PER344 Social Media Tools &amp; Techniques (Jun. 6)</li><li>• FMACC Exercise (Apr. 25)</li></ul>			<ul style="list-style-type: none"><li>• EOC Activation Functional Exercise (Jun. 22)</li></ul>			<ul style="list-style-type: none"><li>• G90 Basic PIO Training (Oct. 24-26)</li><li>• Simulated Emergency Test (SET) Exercise (TBD)</li><li>• 2017 Pipeline Exercise (TBD)</li><li>• E0930 Community-Specific Integrated Emergency Management Course (Nov. 13-16)</li><li>• ICS 400 Advanced Incident Command System (TBD)</li></ul>		

Scheduled Event

Tentative Event

Regional Event

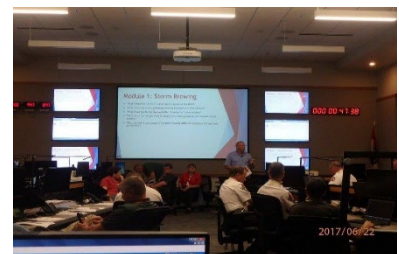
State Event

National Event

\*Schedule is subject to updates, revisions, and changes at any time

## EOC Training

EOC training is designed to enhance the role and function of the EOC and its relationship as a component of a multi-agency coordination system. Training ensures that the relationship between the EOC and ICS is fostered which results in an effective coordinated response. Examples of EOC training include: EOC workshops, WebEOC Operator Training, and EOC Position-Specific Training.



### EOC Training Provided:

# of Events: 11

# of People Trained: 256

# of Training Hours Completed:

✓ 54 training hours    ✓ 2,476 participant hours

## ICS Training

ICS is a standardized on-scene incident management concept designed specifically to allow responders to adopt an integrated organizational structure equal to the complexity and demands of any single incident or multiple incidents without being hindered by jurisdictional boundaries. Examples of ICS training include: ICS 300, 400 and ICS Position-Specific Training.



### **ICS Training Provided:**

# of Events: 6

# of People Trained: 169

# of Training Hours Completed: ✓ 133 training hours ✓ 4,096 participant hours

## Boone County Office of Emergency Management Employee Training

In 2017, Boone County BCOEM continued with ongoing training for employees through training provided by SEMA Training & Exercise Program, FEMA Independent Study (IS) Program, equipment training and training provided at professional conferences/events or with partner agencies around the community. This year three employees completed CERT Train-the-Trainer course and are now certified to instruct CERT Basic Training, and member of the BCOEM team is has earned their Remote Pilot Certificate from the Federal Aviation Administration.

### **BCOEM Employee Training:**

# of Events: 38

# of People Trained: 6

# of Training Hours Completed:

✓ 330 training hours

✓ 716 participant hours

## Other Emergency Management Training



The category also includes training and events provided at professional conferences/events, community training events, and volunteer organization training events. Examples of other training include: Weather Spotter Training, and CERT Training.

### **Total Training Provided/Coordinated in 2017:**

# of Events: 4

# of People Trained: 118

# of Training Hours Completed:

✓ 33 training hours 710 participant hours

## Exercises

Exercises play a vital role in community preparedness by enabling community stakeholders to test and validate plans and capabilities, and to identify both capability gaps and areas for improvement. They bring together and strengthen the community in its efforts to prevent, protect against, mitigate, respond to, and recover from all hazards.

BCOEM exercises follow the exercise design, methodology, and evaluation processes prescribed in the Homeland Security Exercise and Evaluation Program (HSEEP).



BCOEM coordinated several discussion-based and operations-based exercises during 2017. BCOEM conducted five EOC Activation Workshops, the Region F Multi-Agency Coordination Concept (FMACC) Functional Exercise, the Local Emergency Planning Committee (LEPC) Tabletop Exercise, the EOC Activation Functional Exercise and a combination of discussion and operations-based exercises at the Community-Specific Integrated Emergency Management Course (IEMC) highlighted below.

### **Total Exercises Conducted/Participated in 2017:**

# of Events: 13

# of People Trained: 220

# of Training Hours Completed:

✓ 37 exercise hours

✓ 955 participant hours

## **Exercise Highlight: Community-Specific Integrated Emergency Management Course (IEMC)**

Boone County has been selected by the Federal Emergency Management Agency (FEMA) Emergency Management Institute (EMI) to participate in a community-specific Integrated Emergency Management Course (IEMC) at the National Emergency Training Center (NETC) in Emmitsburg, Maryland, November 13-16, 2017.

The community-specific IEMC is a four-day exercise-based training that simulates crisis situations in a structured learning environment focusing on our community's specific hazards and learning objectives. The course combines classroom lectures, discussions, small-group planning sessions, and exercise-based training to expose participants to new ideas and increase their awareness of the coordination needed among other agencies and organizations. Boone County will be taking 75 community representatives from various governmental and non-governmental agencies to the EMI campus to participate in this exciting program.

Boone County is one of twelve communities across the Nation to be selected, and one of three to be selected for an on-campus delivery. This is an invaluable opportunity for our community to grow and learn together, as well as, enhance our community's emergency management system, and our resilience to disaster.



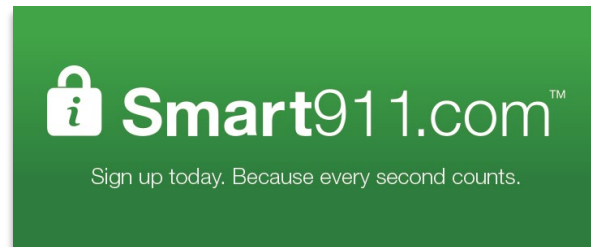


## Community Engagement

Boone County BCOEM strives to engage the local community in emergency preparedness activities and education throughout the year. Community engagement activities are designed not only to provide preparedness education, but also to focus on working toward a behavioral change to increase personal preparedness. BCOEM attended events including Tons of Trucks, Safe Kids Day, and the Home and Garden Show.

During 2017, BCOEM hosted and/or participated a variety of community engagement activities that including presentations on Smart911/Rave Alerts, attending public gatherings and fairs to talk with community members and coordinating a National Weather Service Storm Spotters training. BCOEM is also working closely with local media and utilizing social media to ensure that preparedness education is easily accessible to the community.

in



Social media, including Facebook and Twitter is used to promote emergency preparedness tips, share National Weather Service alerts and advisories and to endorse BCOEM to its community members. Weekly social media plans are developed internally using materials published by partners including the National Weather Service, Do1Thing, Smart911 and community stakeholders.

In addition to sharing events, trainings, and preparedness on social media BCOEM produces a quarterly newsletter which offers a reflection of events that occurred during the previous quarter as well as the promotion of upcoming events and calendar items.

### **Highlight: Storm Spotter Training**

BCOEM partnered with the National Weather Service St. Louis Office and American Legion Post 202 to host Storm Spotters training for the community ahead of severe weather season. The American Legion was gracious in donating use of their facility for the three-hour course. 75 community members attended this training course.



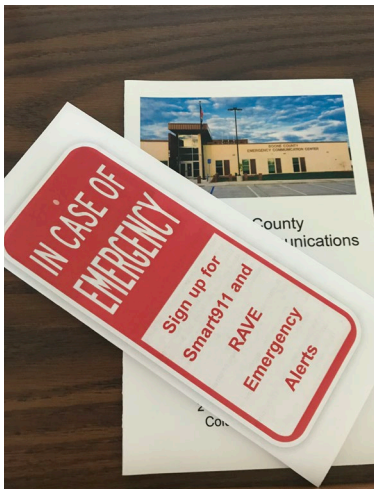
# Public Information

## General Emergency Public Information

BCOEM works very closely with various media outlets from within our community to ensure citizens have access to the best possible information. Using press releases, media advisories, and social media, among other methods, BCOEM is a leader in providing timely and accurate information by engaging our media partners regularly. In addition to providing information, members of the media often contact staff from BCOEM as subject matter experts on specific topics related to emergency preparedness, disaster response, mitigation activates or training events. BCOEM stands ready, willing and able to be the single source of information on these topics and a resource to our entire community.



## Public Outreach



Every month, BCOEM provides outreach to various community members, civic groups, professional originations and others in an effort to engage the community. Topics for outreach are often specific to the hosting audience, but have covered topics related to disaster and emergency preparedness, Smart 911, Emergency Management operations and other topics specifically requested. This office views outreach as a critical area to focus on in an effort to ensure Boone County is well prepared for incidents when they occur. By utilizing a model that welcomes questions and audience participation BCOEM encourages citizens to become engaged during these outreach sessions.



# Severe Weather Monitoring and Warning Program

## Overview

2017 has demonstrated that severe weather continues to represent the greatest hazard to our community and BCOEM recognizes the critical importance of comprehensive weather reporting and monitoring. BCOEM works closely with the National Weather Service (NWS), local media and Joint Communications to ensure our community has the most accurate and timely weather information.

## StormReady Community

Boone County has applied for the National Weather Service's (NWS) StormReady designation in 2017.



"A community that demonstrates its communications system proves an easy flow of critical severe weather warnings and information between NOAA's, NWS, emergency response agencies, and the residents of and visitors to the community earns StormReady designation. StormReady communities are better prepared to save lives from the onslaught of severe weather through better planning, education, and awareness. No community is stormproof, but StormReady can help communities save lives."

## Partnership

BCOEM works closely with the staff of the NWS located in St. Louis, Missouri and with local meteorologists. These meteorological professionals represent decades of technical experience. They produce the best information for our emergency leaders and help our community leaders to make informed decisions during weather-related incidents.

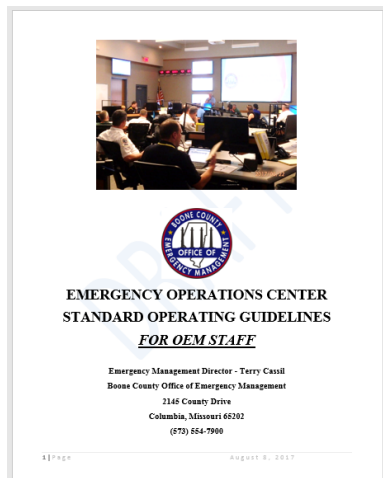
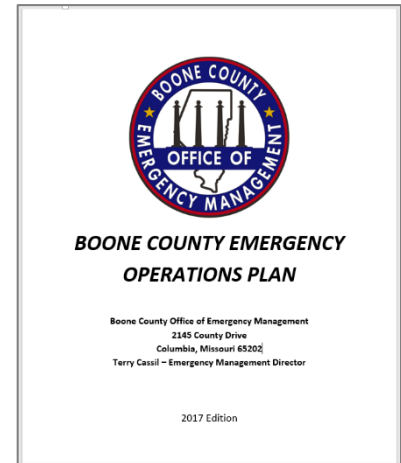


# Emergency Operations Planning

## Emergency Operations Plan

The Boone County Emergency Operations Plan (EOP) is a critical element of community preparedness which outlines key functions and mission components of emergency management. The plan identifies the agencies responsible for each of those functions, and how they will be accomplished.

BCOEM coordinates plan development and maintenance with other governmental and response partners and stakeholders. Ongoing BCOEM planning objectives include updating and re-formatting the EOP from an annex format to an Emergency Support Function (ESF) format to be consistent with state and federal plans.



## Supporting Plans

Other planning activities include creation of the Boone County EOC Standard Operating Guide, the debris management plan, shelter planning, creating and maintaining resource and contacts lists, reviewing and assisting with other entities' emergency plans, completion of the hazardous materials plan for the Local Emergency Planning Committee (LEPC), and rewrite of the regional communications interoperability plan. BCOEM ensures that emergency plans within the County are consistent with one another, and are compliant with the National Incident Management System (NIMS) and other national standards.

## Hazard Mitigation Plan

Boone County and its jurisdictions have had a FEMA approved hazard mitigation plan in place since 2005; the plan, and the mitigation strategy within it, is updated every five years as required by federal law. For the 2015 update, the Boone County plan has been enhanced to an All Hazards Mitigation Plan. In addition to profiling eleven natural hazards, the plan now also profiles eleven technological/human-made hazards which are potential threats. A risk assessment is included for each potential hazard.



# Special Event Coordination

## Overview

Boone County is host to several special events annually, including the Salute to Veterans Air Show, Roots N Blues N BBQ, 4th of July Fire in the Sky, the Boone County Fair, and Art in the Park. Additionally, Boone County will be receiving potentially hundreds of thousands of visitors for the 2017 Total Solar Eclipse.



While large special events generate revenue and interest in the community, they also come with challenges. Special events can place a strain on community resources. Additional planning, preparation, and mitigation are necessary to make an event successful and to keep visitors and the citizens of Boone County safe.

Boone County BCOEM supports local events by maintaining and sharing situational awareness information, coordinating event specific weather reporting and providing special event action and contingency plans. Depending on the scope and complexity of an event, the EOC may also be activated, as is planned for the Solar Eclipse.

This investment of time and resources to special event planning represents the County's commitment to providing a secure and safe environment for our many cultural events.



### **2016-2017 Special events supported by BCOEM:**

- Fire in the Sky
- Heritage Fest
- Art in the Park
- Boone County Fair
- Salute to Veterans Air Show
- 2017 Total Solar Eclipse





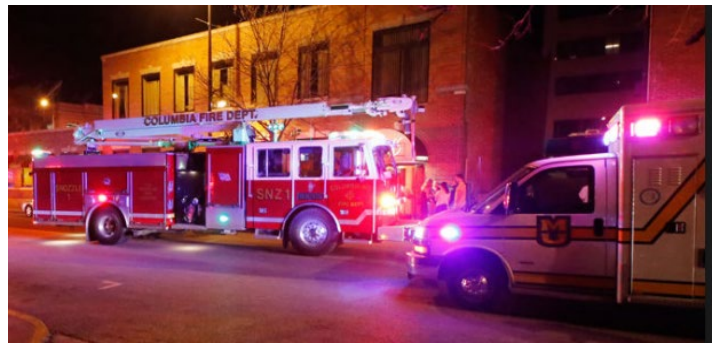
# Resource Coordination and Management

In its first two years under the leadership of Boone County government, the Office of Emergency Management staff has been developing visibility on available resources in and around Boone County that may be utilized in times of disaster.

Following the tenet that “all disasters start locally and end locally”, local resources are the first to be identified and utilized in any type of an incident. Actively cultivating relationships with resource providers in the County has resulted in detailed lists of resources and contact information that may be used for disaster response and recovery.



Besides local governmental agencies, Boone County BCOEM may fill incident resource needs through emergency contracts, by enlisting the aid of volunteer, non-profit and faith-based agencies, and through mutual aid.



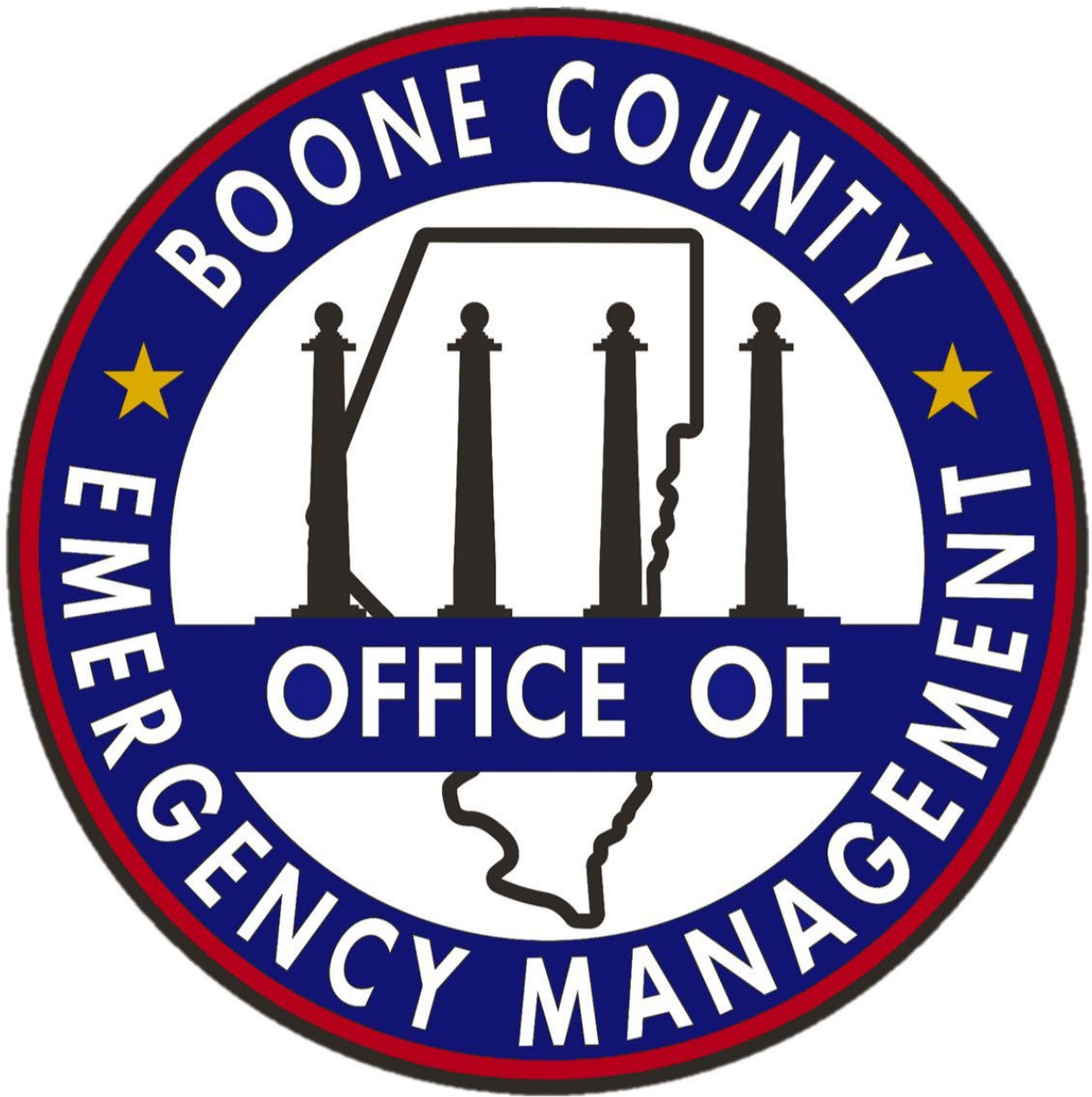
Emergency management and incident response activities require detailed management of resources including personnel, teams, facilities, and equipment. Resource management concepts - typing, inventorying, deployment, tracking and resource recovery - are employed before, during, and after a disaster to meet incident needs.



Resources management processes are being included in the EOC standard operating guidelines currently under development with the input of our stakeholder partners. Customized Boone County Resource Request forms are an integral part of the resource movement process, as is the use of the WebEOC disaster information management system.

WebEOC allows visibility of, and action on, resource requests to all community disaster management partners, to the Missouri State Emergency Management Agency, and to potential disaster partners/resource providers within the region and across the state.





Boone County Office of Emergency Management

2145 County Drive  
Columbia, Mo.  
65203

(573) 554-7900



