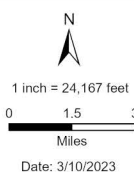


SHEET INDEX

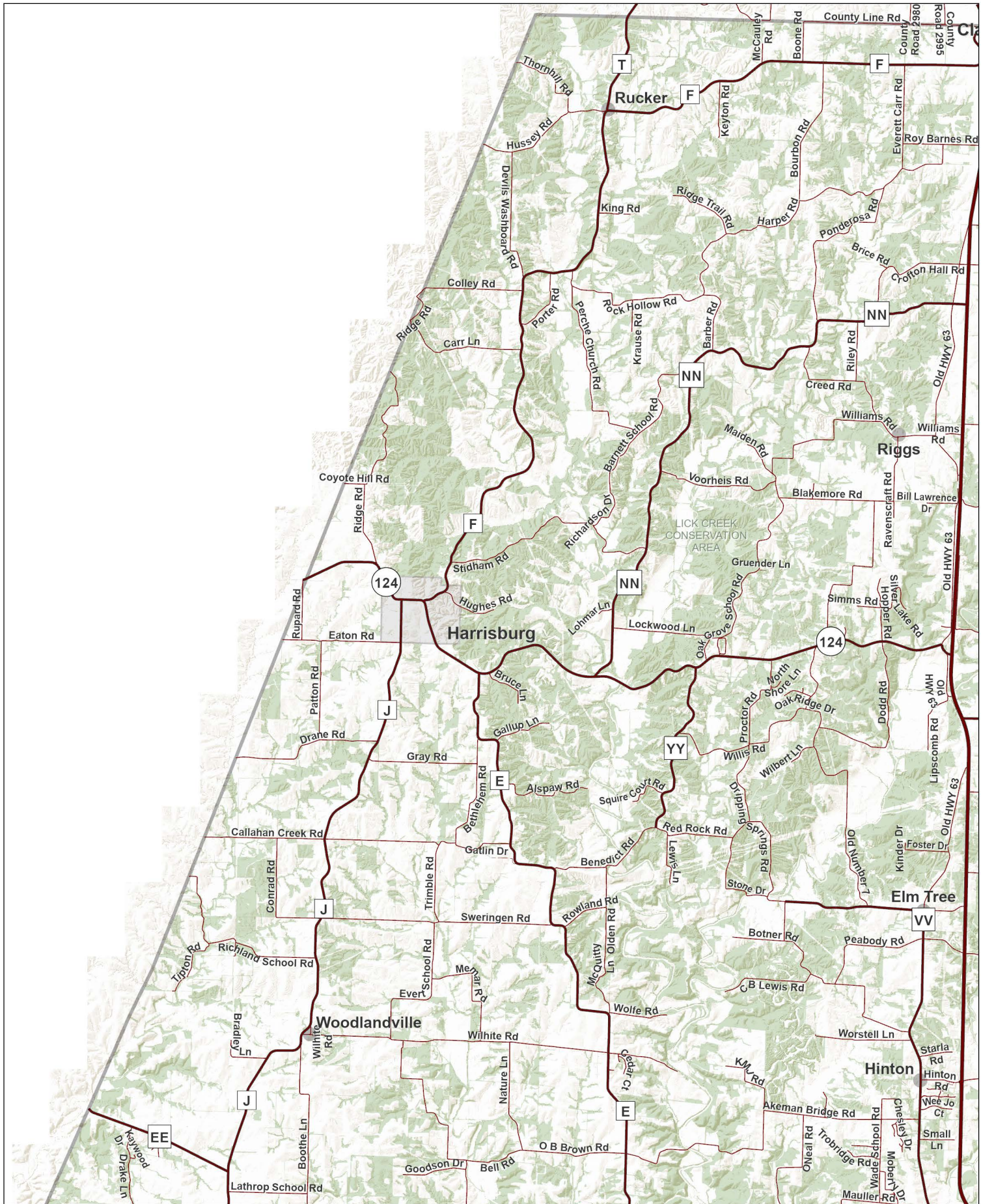
- Federal or State Highway
- Map Extent
- Unincorporated Municipality
- City Boundary



Assessor Dataset Disclaimer:
 These maps were prepared for the inventory of real property based on the utilization of deeds, plans, and/or supportive data. In addition, map files are frequently changed to reflect changes in boundaries, lot lines and other geographic features resulting from changes in ownership, development, and other causes. The existence, dimension, and location of features, as well as other information, should not be relied upon for any purpose without actual field verification. The County of Boone makes no warranty of any kind concerning the completeness or accuracy of information contained on these maps and assumes no liability or responsibility for the use or reuse of these maps by persons not affiliated with Boone County. Use of these maps by any person not affiliated with Boone County constitute agreement by the user to assume full liability and responsibility for the verification of the accuracy of information shown on these maps.

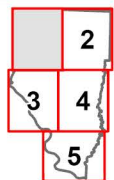
The following map sources were utilized from the Boone County Assessor's Office, GIS Department & City of Columbia: Parcel boundaries, ownership, roads, and various reference layers.

Date: 3/10/2023



SHEET
1

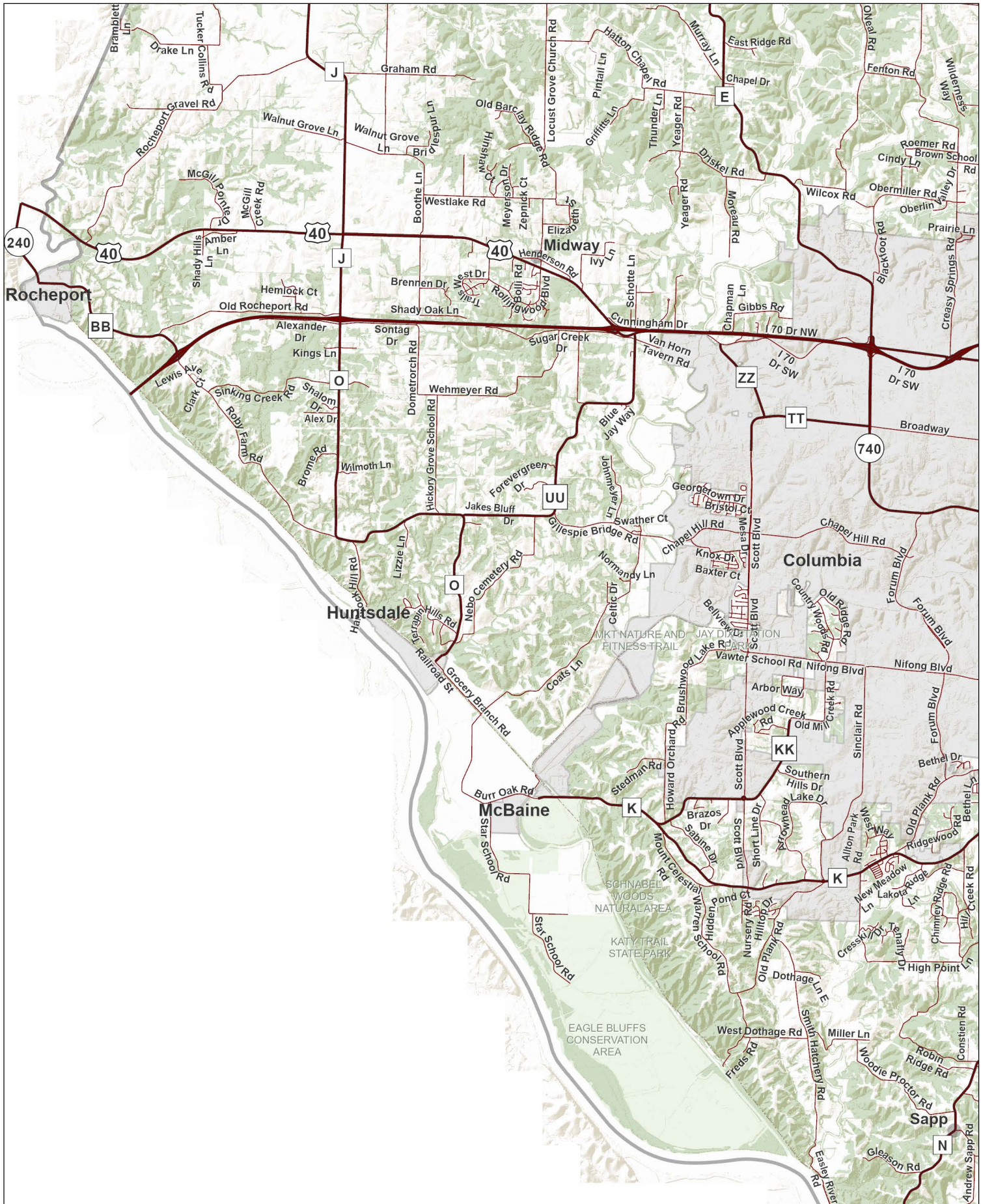
- Federal or State Highway
- Road
- Private Road
- Trail
- Unincorporated Municipality
- City Boundary
- Forests
- Parks and Conservation Areas



N
1 inch = 8,333 feet
0 0.5 1
Miles
Date: 3/10/2023

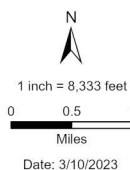
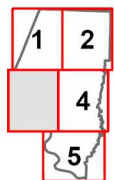
Assessor Dataset Disclaimer:
These maps were prepared for the inventory of real property based on the utilization of deeds, plans, and/or supportive data. In addition, map files are frequently changed to reflect changes in boundaries, lot lines and other geographic features resulting from changes in ownership, development, and other causes. The existence, dimension, and location of features, as well as other information, should not be relied upon for any purpose without actual field verification. The County of Boone makes no warranty of any kind concerning the completeness or accuracy of information contained on these maps and assumes no liability or responsibility for the use or reuse of these maps by persons not affiliated with Boone County. Use of these maps by any person not affiliated with Boone County constitutes agreement by the user to assume full liability and responsibility for the verification of the accuracy of information shown on these maps.

The following map sources were utilized from the Boone County Assessor's Office, GIS Department & City of Columbia: Parcel boundaries, ownership, roads, and various reference layers.



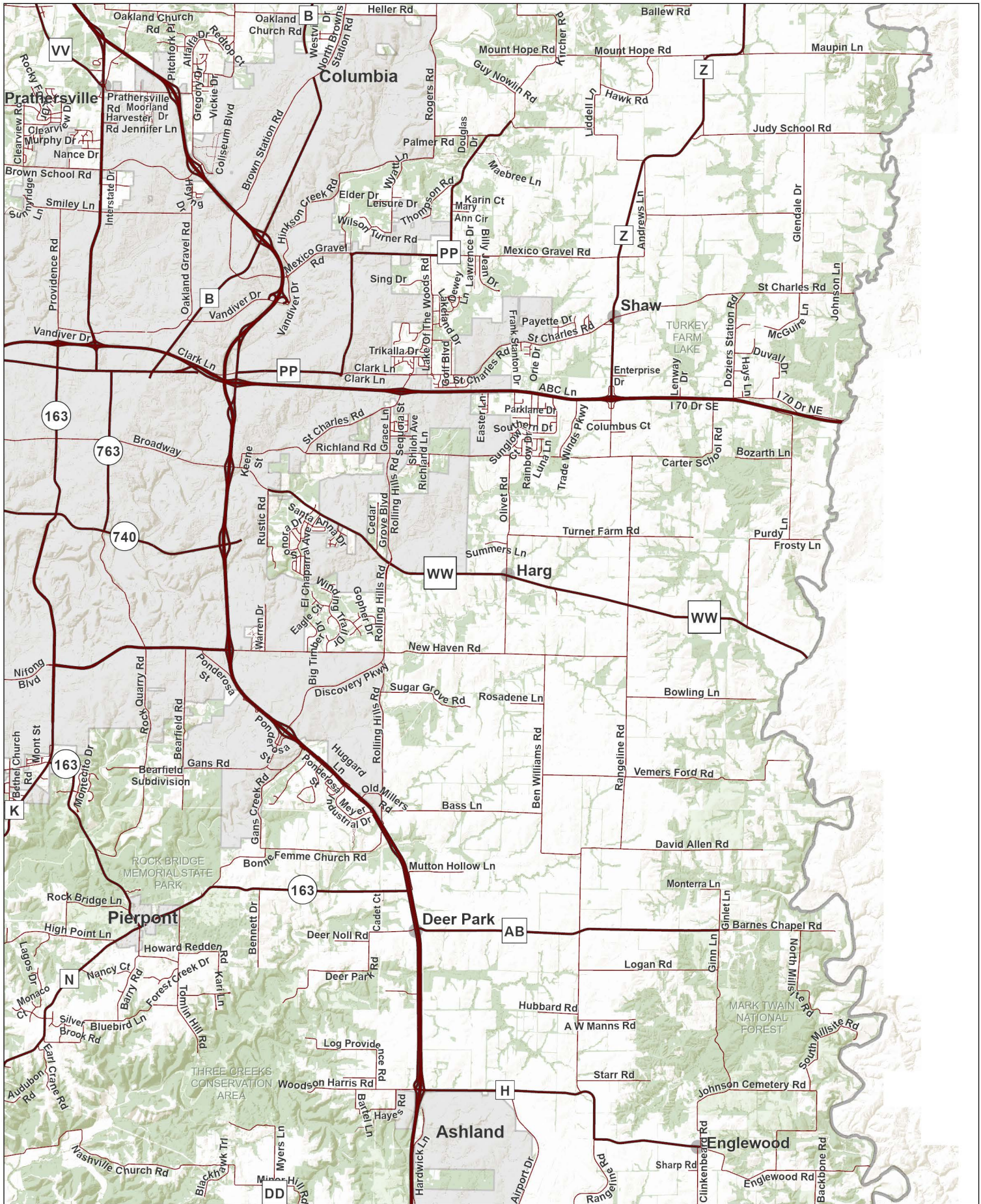
SHEET
3

- | | |
|--------------------------|------------------------------|
| Federal or State Highway | Unincorporated Municipality |
| Road | City Boundary |
| Private Road | Forests |
| Trail | Parks and Conservation Areas |



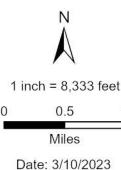
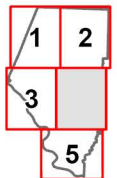
Assessor Dataset Disclaimer:
These maps were prepared for the inventory of real property based on the utilization of deeds, plans, and/or supportive data. In addition, map files are frequently changed to reflect changes in boundaries, lot lines and other geographic features resulting from changes in ownership, development, and other causes. The existence, dimension, and location of features, as well as other information, should not be relied upon for any purpose without actual field verification. The County of Boone makes no warranty of any kind concerning the completeness or accuracy of information contained on these maps and assumes no liability or responsibility for the use or reuse of these maps by persons not affiliated with Boone County. Use of these maps by any person not affiliated with Boone County constitute agreement by the user to assume full liability and responsibility for the verification of the accuracy of information shown on these maps.

The following map sources were utilized from the Boone County Assessor's Office, GIS Department & City of Columbia: Parcel boundaries, ownership, roads, and various reference layers.



SHEET
4

- | | |
|--------------------------|------------------------------|
| Federal or State Highway | Unincorporated Municipality |
| Road | City Boundary |
| Private Road | Forests |
| Trail | Parks and Conservation Areas |



Assessor Dataset Disclaimer:
These maps were prepared for the inventory of real property based on the utilization of deeds, plans, and/or supportive data. In addition, map files are frequently changed to reflect changes in boundaries, lot lines and other geographic features resulting from changes in ownership, development, and other causes. The existence, dimension, and location of features, as well as other information, should not be relied upon for any purpose without actual field verification. The County of Boone makes no warranty of any kind concerning the completeness or accuracy of information contained on these maps and assumes no liability or responsibility for the use or reuse of these maps by persons not affiliated with Boone County. Use of these maps by any person not affiliated with Boone County constitutes agreement by the user to assume full liability and responsibility for the verification of the accuracy of information shown on these maps.

The following map sources were utilized from the Boone County Assessor's Office, GIS Department & City of Columbia: Parcel boundaries, ownership, roads, and various reference layers.



SHEET
5

- Federal or State Highway
- Road
- Private Road
- Trail
- Unincorporated Municipality
- City Boundary
- Forests
- Parks and Conservation Areas



1 **2**
3 **4**

1 inch = 8,333 feet

0 0.5 1
Miles

Date: 3/10/2023

Assessor Dataset Disclaimer:
These maps were prepared for the inventory of real property based on the utilization of deeds, plans, and/or supportive data. In addition, map files are frequently changed to reflect changes in boundaries, lot lines and other geographic features resulting from changes in ownership, development, and other causes. The existence, dimension, and location of features, as well as other information, should not be relied upon for any purpose without actual field verification. The County of Boone makes no warranty of any kind concerning the completeness or accuracy of information contained on these maps and assumes no liability or responsibility for the use or reuse of these maps by persons not affiliated with Boone County. Use of these maps by any person not affiliated with Boone County constitute agreement by the user to assume full liability and responsibility for the verification of the accuracy of information shown on these maps.

The following map sources were utilized from the Boone County Assessor's Office, GIS Department & City of Columbia: Parcel boundaries, ownership, roads, and various reference layers.