

2022

ANNUAL REPORT

BOONE COUNTY COMMUNITY
SERVICES DEPARTMENT



**Boone County
Children's Services Fund**





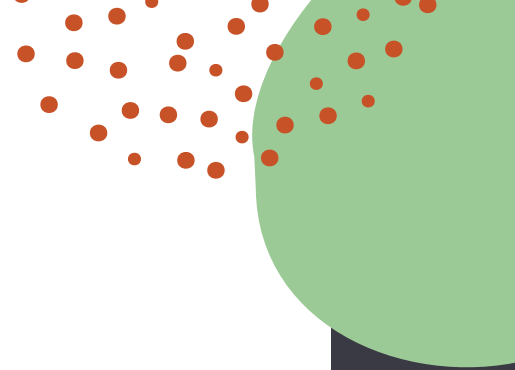


Table of Contents

4	Boone County Community Services Department (BCCSD)	5	Letter from the Director
6	About this Report	7	Boone County Student Data Trends
8	2022 Program Outcomes Overview	10	Infant & Early Childhood Programs
18	School-Based Programs	26	Youth & Family Support Programs
38	Treatment Programs	46	Community Support & Basic Needs Programs
58	Community Collaboration	60	Upward Mobility Action Plan
62	Financial Summary	63	Community Investment



Pictures throughout the report were taken by Kristin Cummins in Boone County communities

Boone County Community Services Department (BCCSD)

The Community Services Department was created to oversee and coordinate the disbursement of the funds received from the Children's Services Fund sales tax, the portion of the Boone Hospital lease revenue designated for health care, and the domestic violence funds collected through court fees.

The mission of Boone County Community Services is to support the greatest possible level of independence and self-sufficiency of Boone County residents by promoting their physical, mental, and social well-being to cultivate a safe and healthy community.

Children's Services Fund

On November 6, 2012, the citizens of Boone County passed County of Boone Proposition 1, which created a Children's Services Fund for children and youth 19 years of age or less in Boone County. The Boone County Children's Services Board (BCCSB) has been appointed by the County Commission and entrusted to oversee this Fund. The Fund is created pursuant to RSMo §67.1775, RSMo §210.861, and the ballot language presented to the voters on November 6, 2012. RSMo §210.861 specifies the types of services that may be funded by the Children's Services Fund. The mission of the BCCSB is:

To improve the lives of children, youth, and families in Boone County by strategically investing in the creation and maintenance of integrated systems that deliver effective and quality services for children and families in need.

In 2021, the BCCSB adopted this equity statement:

The Boone County Children's Services Board (BCCSB) is dedicated to improving the lives of children, youth, and families in Boone County. Our responsibility is to ensure equitable and fair stewardship of resources that have the greatest impact on the lives of children and families within Boone County. We acknowledge our society's history of both active and passive oppression, exclusion, and racism toward underserved community members. We are committed to equity and inclusivity in our policies and practices. These values will be at the forefront of our funding decisions as we promote inclusive practices within our community.

Community Health Fund

As part of the Boone Hospital amended lease agreement with Barnes Jewish Christian dated December 27, 2006, the County of Boone received \$500,000 annually for the purposes of addressing community health needs, as determined by the Boone County Commission. As of January 1, 2021, the lease ended and the County no longer receives these funds.

Domestic Violence Services Fund

State of Missouri statutes authorize counties to collect fees to fund shelters for victims of domestic violence. Per these statutes, the County of Boone (Boone County) collects fees on civil actions, marriage licenses, and criminal cases. These funds are then utilized to provide funding for Shelters for Victims of Domestic Violence. True North of Columbia, Inc. received \$21,820.53 in 2022 to provide victims of domestic and sexual violence with safe housing, advocacy, and support.



Rocheport

Dear Boone County Residents,

I am pleased to present the Boone County Community Services Department 2022 Annual Report. The Community Services Department (BCCSD) was established in 2014 and is responsible for the administration of the Children's Services, Community Health/Medical, and Domestic Violence Funds for a combined budget of over \$10 million a year. Last year was marked by significant transitions. Our department released a \$10 million open Request for Proposal (RFP), developed the Boone County Upward Mobility Plan, began training community leaders in Results-Based Accountability, and continued to participate in county-wide initiatives.

The Children's Services Board recognized the severe impact the pandemic had on organizations and wanted to relieve the stress of reapplying for funding in 2021. All of our contracted organizations received an additional year of funding to allow organizations to navigate and recover from the COVID-19 pandemic. Unfortunately, the end of 2022 marked the conclusion of funding programs through the Community Health/Medical Fund, which was funded through the Boone County Hospital lease and Barnes Jewish Christian (BJC). Organizations receiving funding through the Community Health/Medical Fund were encouraged to apply for funding through the Children's Services Fund 2022 Open RFP. The RFP had 61 proposal responses with the Children's Services Board contracting with 49 programs beginning on January 1, 2023.

In addition to administering funding, the BCCSD developed the Boone County Upward Mobility Plan with funding and technical assistance support from the Urban Institute. Boone County was one of eight counties nationwide to join the Urban Institute's Upward Mobility Cohort. Building off a data walk in August 2021, community members worked on three areas of focus: Early Grade Literacy, Jobs and Workforce Development, and Fair and Inclusive Housing. The workgroups envisioned the result we hope to see in our community, identified the root causes limiting upward mobility, and created strategic actions. The Boone County Upward Mobility Plan was released in June 2022 and workgroups continue to meet to implement the strategies identified in the plan. A common theme across the workgroups is the need for continued coordination of the plan. In response, the BCCSD has added a full-time position dedicated to coordinating the Boone County Upward Mobility Plan. A community report provides a summary of the full report submitted to the Urban Institute and can be accessed at <https://www.showmeboone.com/community-services/upward-mobility.asp>.

The framework that guided the creation of the Boone County Upward Mobility Plan was Results-Based Accountability (RBA). The RBA framework utilizes "Turn the Curve Thinking," which can be used to address community issues or to identify ways to improve direct services to children, youth, families, and seniors across each sector of the community. The BCCSD has consistently seen the need for increasing capacity for nonprofit and community leaders to engage in measuring and improving the lives of individuals, families, and our community. However, constraints have hindered the ability of the BCCSD, nonprofits, and community leaders to engage in this level of training and collective impact. The BCCSD was awarded funding support by Missouri Foundation for Health to train Boone County community members and leaders in RBA at no cost to participants. The first cohort of 15 individuals was trained in the fall of 2022. Additional cohorts will be trained until 2025. The goal is to equip our community with evidence-based tools to improve community conditions which contribute to inequities in social determinants of health.

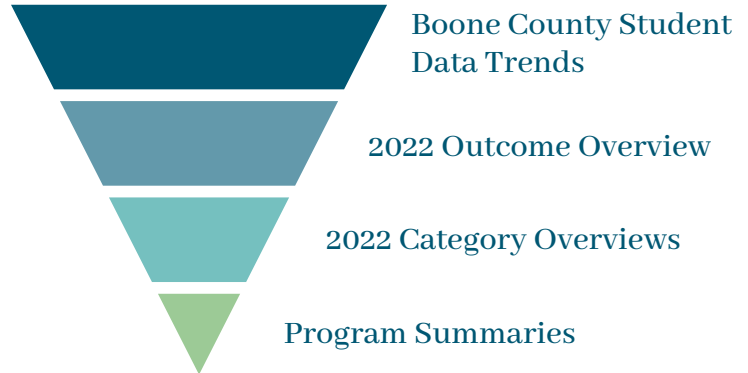
As you will see in the following pages, there are many children, families, and individuals benefitting from the services funded by the Community Services Department. I want to thank both the taxpayers of Boone County and Boone Hospital who made this possible. Healthy children, families, and individuals contribute to a healthy community. I value the opportunity to serve as the Director of the Community Services Department and am grateful to live in a community that cares about and is responsive to the needs of others.

Sincerely,

Joanne Nelson
Community Services Department, Director

About this Report

In 2022, the Community Services Department funded 64 programs aimed at improving the lives of Boone County residents. Each funded program is required to submit semi-annual reports to demonstrate the impact of the program services. The programs are arranged in this report according to the primary population and service category the programs serve. Each category provides an overview of how funding was utilized, program outcomes, and success stories. More detailed information is provided for each program within the category including an overview of the program, amount of funding utilized, and performance measures. Information throughout the report may include individuals served through other funding sources.



Results-Based Accountability

The BCCSD began incorporating the Results-Based Accountability (RBA) framework throughout its operations and community-level projects. The RBA framework can be utilized to make change at a population and organizational/programmatic level.

Population Accountability focuses on improving the quality of life for a population (geographic location).

This report will provide information on Population Accountability by:

- Highlighting trends of all Boone County students compared to national data.
- Demonstrating the collective impact observed through BCCSD funded programs in 2022.

Performance Accountability focuses on improving how well a program, agency, or service system is performing.

Performance Accountability for programs is measured by asking:

- How much did we do?
- How well did we do it?
- Is anyone better off?

The BCCSD funded organizations report on data answering all three of these questions. This data is incorporated throughout the report by providing the number of individuals served, amount utilized, success stories, and performance measures.



Hartsburg

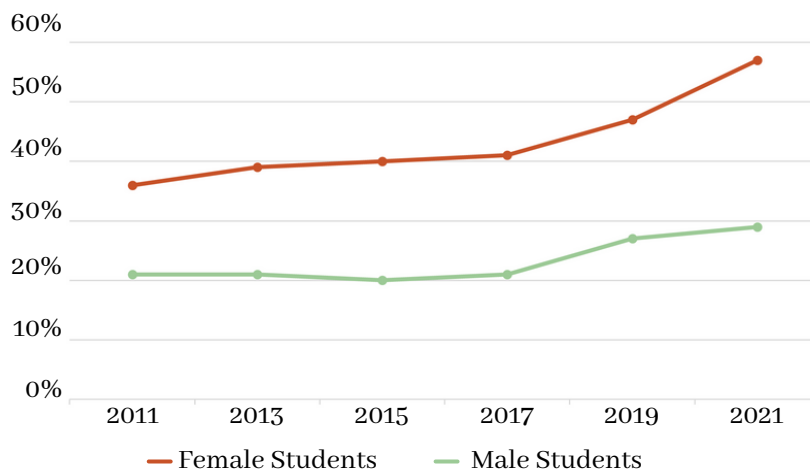
Boone County Student Data Trends

NATIONAL TRENDS:

The Center for Disease Control and Prevention (CDC) produced a report on the increase in persistent feelings of sadness of United States high school youth.

Three in five female students felt persistently sad and hopeless, a marker for depressive symptoms

Persistent Feelings of Sadness or Hopelessness Among U.S. High School Students, by Sex, 2011-2021



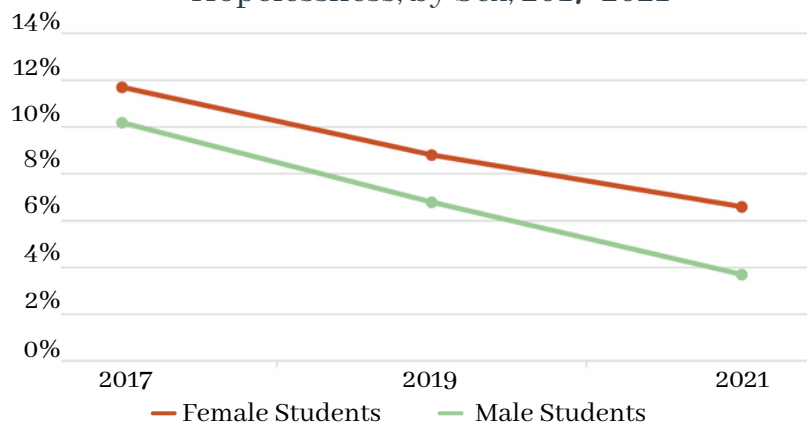
Source: Center for Disease Control and Prevention (2023)

BOONE COUNTY TRENDS:

Similar data is collected in all Boone County schools through a checklist that asks students and their teachers about relationships with peers, social skills, problem-solving, organizational skills, and how they cope when they are upset.

The percentage of Boone County youth feeling sad or hopeless is decreasing.

Boone County High School Self-Report of Sadness or Hopelessness, by Sex, 2017-2021



Source: Family Access Center of Excellence (FACE) of Boone County (2023)

The Missouri Prevention Science Institute, which oversees the Family Access Center of Excellence (FACE) of Boone County, began administering the same checklist in other rural Missouri schools. Initial findings show that other rural students are scoring higher in problems related to internalizing and externalizing behaviors compared to Boone County students.

Boone County schools have expressed a higher frequency and severity of challenging behaviors, in particular after the onset of the COVID-19 pandemic. The screener does not capture the severity of behaviors, but rather identifies the students that may be struggling and are not as easy to identify. The goal of screening students is to provide care to students so they can feel cared for and supported and to increase access to health education.

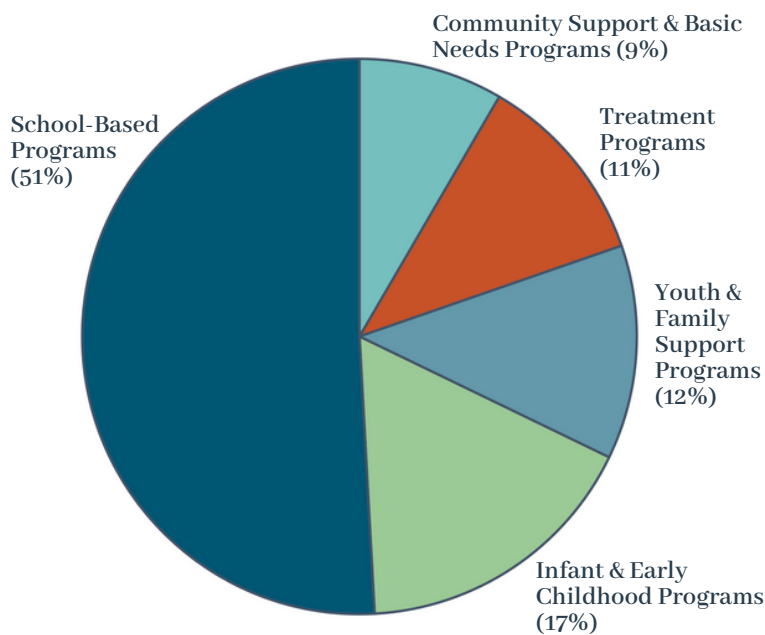
The Boone County Children's Services Fund plays a crucial role in the collective impact within our community. By providing funding for programs and initiatives, it contributes to the collaborative efforts aimed at addressing various challenges faced by children and families in Boone County. Together with other stakeholders, including providers, community partners, and local funders, the Children's Services Fund helps create a comprehensive support system that positively impacts the well-being and development of our community. The funding fosters a collaborative approach, enabling us to work together toward shared goals and achieve meaningful outcomes for the children and families we serve.

2022 Program Out

The BCCSD established common outcomes across contracted programs to better tell the story of how, collectively, programs impact lives and community-level issues within Boone County. The outcomes, number of individuals served, and demographics in this section may include those served through other funding sources.

\$9,038,785.29

TOTAL AMOUNT UTILIZED*



*Funding provided by the BCCSD and distributed across categories

Of the people served
in Boone County,

78%

live in the City of
Columbia

22%

live outside
Columbia
city limits

94,504

INDIVIDUALS SERVED



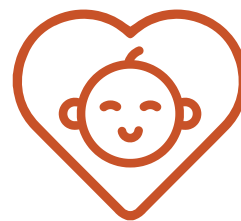
30,354

individuals
received items to
meet their basic
needs



1,343

individuals
gained positive
parenting/co-
parenting skills



443

individuals
reduced their
level of risk for
child abuse
and neglect



7,121

hours of home
visiting were
funded

comes Overview

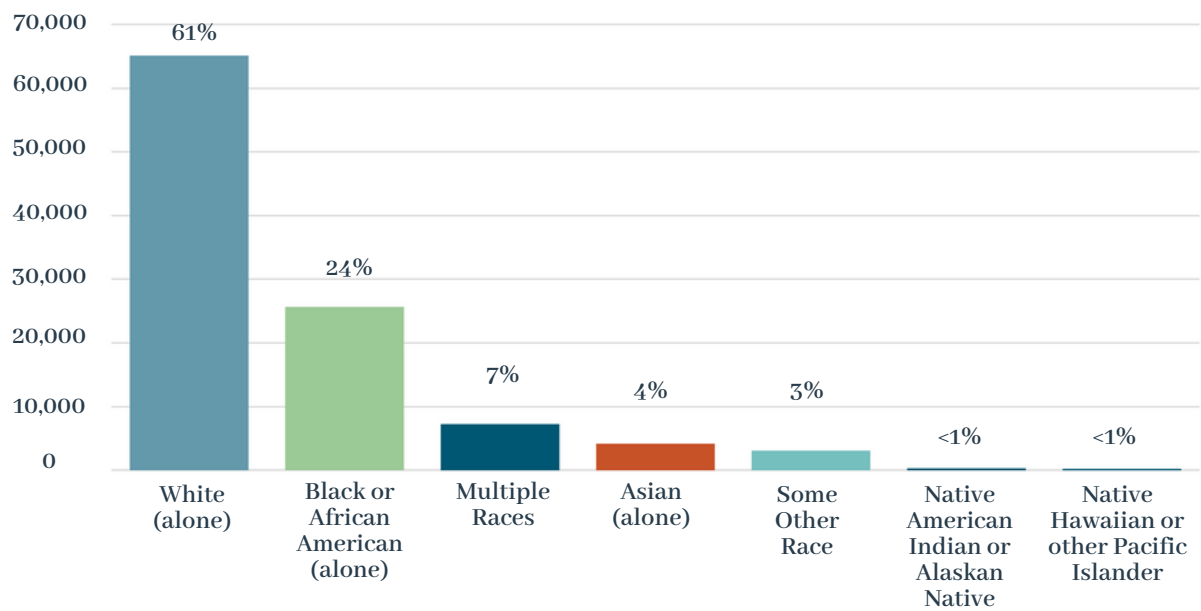
Boone County is known for its outstanding quality of life and continues to be one of Missouri’s most desirable places to live, work, and do business. However, local data shows this is not true for all residents. When disaggregated by race, data show poorer outcomes for those in poverty and for communities of color. Those who have been historically marginalized face increased rates of infant mortality, poor health outcomes, and limited access to well-paying jobs due to systemic issues. The BCCSD is aware of these disparities and seeks to fund programs that serve higher rates of people of color. This data reflects demographic information about who received services compared to the population of Boone County in 2021.

Boone County
Population by Race
(2017-2021)*

White (Alone) - 80.0%
Black (Alone) - 9.2%
Two or More Races - 5.3%
All Other Races - 5.5%

*Boone Indicators Dashboard

TOTAL INDIVIDUALS SERVED BY RACE



29,403

individuals were screened for risk of mental, behavioral, and/or developmental concerns



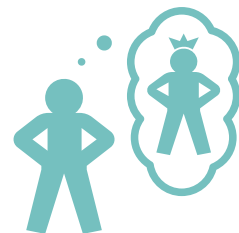
3,815

individuals received case management



1,540

individuals funded to complete training in evidence-based and/or best practices



848

individuals developed positive values, social competencies, or identities

Infant & Early Childhood Programs

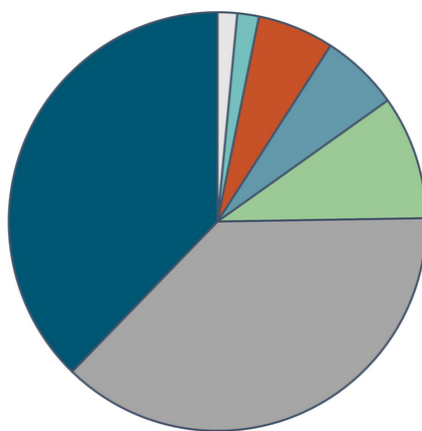
10
funded
programs

Programs provided developmental and behavioral screenings, trainings, evidence-based or best practices curriculum, and early childhood basic needs.



10,518

individuals were served through BCCSD funding



TOTAL PROGRAM FUNDING

- Education (1%)
- Basic Needs (2%)
- Social Development & Enrichment (6%)
- Community Advancement (6%)
- Health & Medical (10%)
- Supportive Services (37%)
- Organizational Capacity Building (38%)



144

individuals reduced the risk of Sudden Infant Death Syndrome (SIDS)



2,019

screenings or assessments were administered to identify if children are not on track with developmental milestones



3,092

hours of home visiting were funded

MADDIE'S SUCCESS STORY

First Chance for Children (FC4C) staff recently participated in an annual Individualized Family Service Plan (IFSP) for Maddie, a child who has been with FC4C since birth. FC4C staff set up a safe crib and began a meaningful journey with the family. In those early days, the parent was told that Maddie might not walk or talk. Eventually diagnosed with Prader-Willi Syndrome, the family was helped by FC4C to connect with First Steps and Boone County Family Resources (BCFR). Maddie also began attending Early Childhood Special Education (ECSE). During the annual IFSP in March, the family and all the team members celebrated Maddie's development in anticipation of starting kindergarten this fall. She now walks, talks, and names many friends in her ECSE classroom! The family, their village, and a lot of collaboration among agencies have made all the difference for Maddie!

First Chance for Children
BabyU



BETH'S SUCCESS STORY

Beth was a single mom who sought therapy as she was struggling with feelings of inadequacy and guilt that her child was not being raised by two parents. Her child's biological father was not stable and they had separated. However, he kept attempting to reconcile. Beth did not want to be with him but wondered if she should reconcile so that her child would have a traditional two-parent family.

Beth participated in counseling on a weekly basis and her treatment goals were to decrease anxiety and depression, to increase her self-care, and to feel more energetic on a daily basis. The Lutheran Family and Children Services (LFCS) therapist provided person-centered psychotherapy, solution-focused therapy, and Cognitive-Behavioral Therapy (CBT). Beth responded well to treatment and was able to identify that her child was thriving in her single-parent household because they had good family support. Beth was able to recognize that a cousin had not done well in a single-parent household, which was the basis of many of her fears for her child's development. The LFCS Therapist reinforced Beth's right to set boundaries and be assertive with the child's biological father to protect her child's best interests.

Beth learned to examine her worrisome thoughts and evaluate their validity, which reduced her anxiety. She also became more intentional in self-care, including getting adequate sleep and exercise. Beth successfully met her therapy goals and ended therapy services feeling more capable and confident in her parenting. She knows that she can return for LFCS counseling services if she needs additional support in the future.

**Lutheran Family and Children's
Services of Mid-Missouri**
Pregnancy and Parenting Services



3,555

hours of case
management funded



459

individuals
increased their
capacity to utilize
evidence-based
and/or best practices



8,723

hours of early childhood
education were supported
through scholarships



CDA STUDENT'S SUCCESS STORY

An early childhood professional received a \$3 an hour raise after completing their Child Development Associate (CDA) Credential through the Quality Childcare Initiative at Moberly Area Community College.

**Moberly Area Community
College**
*Quality Childcare Initiative
at Moberly Area Community
College*

FIRST CHANCE FOR CHILDREN

Baby Bags

- First Chance for Children provides a multi-faceted approach to addressing the needs of children and their families. Baby Bags is one component of this approach which provides education and basic necessities to meet a family's developmental, physical, and mental health needs. The goal is to strengthen families by helping them develop protective factors and providing basic necessities during times in need.

Amount Received:

\$32,500.00

IS ANYONE BETTER OFF?



100%

of families reported decreased stress after receiving Baby Bag services



100%

of families reported increased knowledge of infant health and safety issues



174

Smart Start Kits were distributed, which include items and information appropriate for the requested child's age

FIRST CHANCE FOR CHILDREN

Baby U

Baby U is one component of this approach which provides home visiting services to prepare children to be socially, emotionally and academically ready for kindergarten. Families are also given information on child development, access to resources, and supporting healthy relationships.

Amount Received:

\$138,420.00

IS ANYONE BETTER OFF?



100%

of individuals reported making progress on family strengthening goals



100%

of individuals improved levels of anxiety/stress



96%

of children met or exceeded developmental milestones

FIRST CHANCE FOR CHILDREN

CRIBS (Community Resources, Infant Beds, and Support)

The CRIBS program supports families leaving the hospital by providing basic health and safety items to care for a new baby. A trained counselor offers home visiting to help meet developmental, physical, and mental health needs and to encourage a family's participation in longer term home visitation programs.

Amount Received:

\$15,854.95

IS ANYONE BETTER OFF?



100%

of families participating in the program did not have a child die due to sleep-related death



100%

of families reported increased knowledge of infant health and safety issues



143

safe cribs were distributed to families who lacked safe sleeping accommodations for their baby

FIRST CHANCE FOR CHILDREN

Lend and Learn Libraries

Lend and Learn Libraries provides a safe location for young children and their families to explore toys that assist in social-emotional, cognitive, motor, and language development. The program also offers events with parent-child activities.

Amount Received:

\$24,773.16

IS ANYONE BETTER OFF?



99%

of participants reported the program increased their ability to teach their child



90%

of individuals reported feeling more connected



8

Lend and Learn Libraries events were held in rural Boone County communities

HARRISBURG EARLY LEARNING CENTER

School Age and Early Childhood Services

- The goal of Harrisburg Early Learning Center is to provide year-round services and affordable care for the children of northern Boone County. These services
- include social-emotional screenings for the children in the early childhood program, structured before- and after-school programming, and summer enrichment programming for school-aged children.

Amount Received:

\$39,499.24

IS ANYONE BETTER OFF?



100%

of children in the preschool program demonstrated an increase in positive social behaviors



80%

of school-aged children developed positive values, social competencies, or identities



100%

of families reported less stress because their child(ren) were enrolled in quality and affordable child care



Harrisburg

LUTHERAN FAMILY AND CHILDREN'S SERVICES OF MISSOURI

Amount Received:

\$331,613.08

Pregnancy and Parenting Services

The program provides evidence-based counseling to parents, children, and families. Many clients also are involved in the Parenting Program, which provides case management, home visiting, and supportive counseling for women who are pregnant or parents of young children.

IS ANYONE BETTER OFF?



88%

of parents/guardians improved or maintained depression symptoms



76%

of parents/guardians increased their parenting knowledge



65%

of families had a reduction in child abuse and neglect risk factors

MARY LEE JOHNSTON COMMUNITY LEARNING CENTER

Amount Received:

\$63,465.00

Johnston Early Learning

Mary Lee Johnston Community Learning Center (MLJCLC) provides their enrolled families with case management and support to access resources. In addition to regular childcare programming, MLJCLC provides a specialized pre-kindergarten class that utilizes the HighScope curriculum and provides assessments to prepare children for kindergarten.

HOW MUCH DID WE DO?

The organization had multiple leadership changes throughout 2022 and data was not collected to report on performance measures. Current leadership is diligently improving operational systems and communicating with the BCCSD as changes are being implemented. The BCCSD is closely monitoring the organization to ensure contract compliance.

28

children participated in the classroom utilizing the HighScope curriculum

138

individuals received case management support to help families going through a crisis

33

individuals were supported through scholarships due to a financial emergency or situation

MOBERLY AREA COMMUNITY COLLEGE (MACC)

Quality Childcare Initiative at Moberly Area Community College

Amount Received:

\$332,234.39

MACC offers scholarships for childcare providers and high school students to obtain their Child Development Associate Credential. MACC also provides training and coaching in HighScope, an evidence-based curriculum for early childcare providers.

IS ANYONE BETTER OFF?



94%

of early childcare teachers obtained their CDA credential



100%

of childcare teachers who were trained in HighScope adopted the curriculum in their classrooms



100%

of trained toddler and preschool teachers improved their teacher-child interactions

UNIVERSITY OF MISSOURI - DEPARTMENT OF PSYCHIATRY

SOAR

Amount Received:

\$410,103.08

Funding supports three programs under the SOAR contract: Early Childhood - Positive Behavior Support (EC-PBS), Boone County Early Childhood Coalition (BCECC), and Triple P. EC-PBS provides coaching on screenings and best practices for childcare providers to enhance the social and emotional well-being of young children. The BCECC organizes a coalition that supports collaboration and capacity building of early childhood providers. The BCECC also provides support to families with children through the Triple P evidence-based intervention model which increases knowledge, skills, and confidence of families to reduce the prevalence of mental health, emotional, and behavioral problems in children.

IS ANYONE BETTER OFF?



88%

of early childcare teachers increased or maintained knowledge after attending a training



96%

of parents/guardians increased using positive parenting strategies



76%

of early childcare providers increased knowledge in building positive relationships with parents

UNIVERSITY OF MISSOURI - DIVISION OF
PEDIATRICS, DEPARTMENT OF CHILD HEALTH,
AND UM HEALTH CARE

Amount Received:
\$141,398.75

HealthySteps

HealthySteps connects with families during pediatric well visits as part of the primary care team. They offer screenings, help with complex parenting issues, guidance and referrals, care coordination, and home visits.

IS ANYONE BETTER OFF?



100%

of families received
information on
effective, positive
parenting practices



80%

of families
improved positive
parenting practices



71%

of children were
on schedule to
attend well-
child checks



School-Based Programs

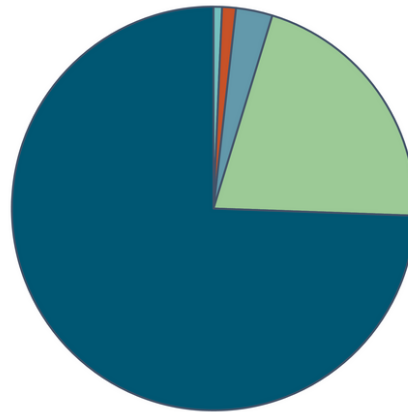
8

funded
programs

Program services included training for teachers, after-school clubs, capacity building for student education, case management, social-emotional screenings, crisis intervention, and psychiatric services.



34,104
individuals were
served through
BCCSD funding



TOTAL PROGRAM FUNDING

- Organizational Capacity Building (<1%)
- Social Development & Enrichment (1%)
- Basic Needs (3%)
- Supportive Services (21%)
- Health & Medical (74%)



22%
of individuals funded
resided outside
Columbia city limits



182
individuals utilized
interpretation to participate
in programming



1,708
individuals accessed
supplemental food
at their school

SCHOOL GARDENS SUCCESS STORY

Columbia Center for Urban Agriculture (CCUA) was at New Haven Elementary School delivering a late season compost to prepare the beds for spring planting. A small, special education class of young kids came outside and were immediately drawn to the truck full of compost and wheelbarrows. CCUA staff filled each wheelbarrow with compost and the kids confidently jumped in saying, "I can do it!" and got to work wheelbarrowing the compost over to the gardens. It wasn't until after they were all finished helping out and back inside that one of the teachers let us know that those particular kids were usually non-verbal.

Columbia Center for Urban Agriculture
*Improving Mental and Physical Health of Food Insecure
Children through Hands-on Nutrition Interventions*



MU BRIDGE PROGRAM TESTIMONIAL

I wanted to take a moment to write a testimonial about the MU Bridge Program. I am an elementary school counselor in Columbia, Missouri. I work at a Title I school where many of our families have a number of barriers when accessing outside community resources. I have been so grateful for this program since its creation, and I can tell you that just from my school alone (Parkade Elementary), this program has provided mental health evaluations, treatment, and services for hundreds of students. The Bridge program minimizes barriers to providers as they meet with students and families at the school or via Zoom, which helps if there is a transportation barrier for the family. The Bridge program has been a free service for families, minimizing financial barriers that many of our students and families face. The Bridge program has also provided therapy referrals, parenting resources, medication assistance, and so many other resources for our families. I've watched dozens of students receive services through the MU Bridge program, and we've seen their grades go up, their attendance go up, their office referrals go down, etc. They begin to feel more confident in themselves and their abilities because they are receiving the mental health treatment that they need.

I will forever be grateful to this program for assisting schools in providing the mental health resources that the students in our community need in order to be successful.

Thank you so much for all you do for our students in Boone County.

Columbia Public Schools Teacher



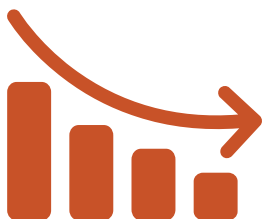
158

individuals increased their capacity to utilize best practices



693

individuals received therapy services



208

individuals experienced fewer mental, emotional, and/or behavioral health symptoms



1,023

hours of psychiatric treatment were funded

BIG BROTHERS BIG SISTERS

School-Based Mentoring

Children participating in the program are matched with mentors to offer social, emotional, and academic support. The goal is to develop positive relationships that create a positive, lasting effect on the lives of youth.

IS ANYONE BETTER OFF?

Amount Received:

\$37,245.10



76%

of youth indicated having positive values, social competencies, or identities



95%

of youth reported they had not been truant in the past 12 months



91%

of youth see themselves finishing high school

CENTRAL MISSOURI COMMUNITY ACTION

BRIDGE

BRIDGE supports families experiencing poverty who have children in the first few years of elementary school by working in collaboration with the child's teacher. The program helps build social-emotional skills within children and build resiliency in both children and families. BRIDGE also provides training to teachers to understand the impact poverty has on child development and learning.

IS ANYONE BETTER OFF?

Amount Received:

\$333,370.45



96%

of families made progress or completed their self-identified goals



77%

of families increased or sustained their level of self-sufficiency



100%

of dual-language learning families reported feeling supported through interpretive services



Hallsville

COLUMBIA CENTER FOR URBAN AGRICULTURE

Improving Mental and Physical Health of Food Insecure Children through Hands-on Nutrition Interventions

The program provides nutrition and garden-based education to eight Columbia elementary schools which have high rates of children participating in free and reduced-price lunches. Funding also supports the Opportunity Gardens program, which teaches low-income families with children how to grow their own produce and how to prepare healthy meals.

Amount Received:

\$126,430.00

IS ANYONE BETTER OFF?



76%

of students increased positive attitudes toward eating fruits and vegetables



80%

of teachers reported positive changes in students around health literacy, science literacy, and/or interpersonal skills



81%

of Opportunity Gardens participants reported eating food grown in their garden

JEFFERSON CITY AREA YMCA

Healthy Hometown Kids

The program provides seventh grade students at Southern Boone County Middle School with interactive classes with specialists in areas of physical health, mental health, wellness, and nutrition. Additional programming is offered to students on early release days. Seventh grade students also have free access to YMCA services including workout plans, YMCA classes, and other recreational activities.

IS ANYONE BETTER OFF?



10%

of students participating in interactive classes with specialists improved their body weight



14%

of students used their YMCA membership at least one day per week



43

students participated in programming on early release days

Amount Received:

\$125,127.92



Ashland

THE FOOD BANK FOR CENTRAL AND
NORTHEAST MISSOURI, INC.

Buddy Pack Program

The Buddy Pack Program provides weekend meals for children experiencing food insecurity. Buddy Packs are distributed each Friday and before school holidays throughout the school year.

IS ANYONE BETTER OFF?



100%

of Buddy Packs distributed contained foods that met Feeding America's best practices for nutritional content



150

school representatives were trained in distributing Buddy Packs



1432

Boone County children participated in the Buddy Pack Program

Amount Received:

\$104,077.50

THE FOOD BANK FOR CENTRAL AND
NORTHEAST MISSOURI, INC.

School Pantries Program

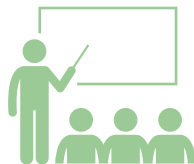
The School Pantries Program provides a discrete way for middle and high school students experiencing food insecurity to access supplemental food. Pantries are located on school grounds to allow for a more readily accessible food source for students and their families.

IS ANYONE BETTER OFF?



56%

of food distributed met Feeding America's best practices for nutritional content



45

school representatives were trained in managing their school pantry



276

Boone County children utilized their school pantry

Amount Received:

\$9,336.06



UNIVERSITY OF MISSOURI – DEPARTMENT OF PSYCHIATRY

Amount Received:

\$908,416.36

MU Bridge Program: School-Based Psychiatry/Child-Parent Psychotherapy

The MU Bridge Program provides school-based psychiatric services and nurse case management for Boone County children and adolescents who are in need of psychiatry services. The goal of the program is to decrease the wait time for school-age children to access psychiatry services. Bridge staff also provide Child-Parent Psychotherapy (CPP) interventions for children from birth to age 5 and/or their parents, families, or caregivers who have experienced one or more traumatic events.

IS ANYONE BETTER OFF?



86%

of children participating in MU Bridge Program demonstrated improvement in mood and/or attention, behavior, and activity level



85%

of teachers with students participating in MU Bridge Program reported improved classroom behavior



82%

of children participating in CPP had a reduction in emotional/behavioral difficulties

FAMILY ACCESS CENTER OF EXCELLENCE (FACE)

Amount Received:

\$2,942,827.99

- FACE was established to meet the mental health needs of all children, youth, and their families in Boone County and promote access to resources.
- FACE is a unique partnership between community and school partners.
- Programming is influenced by the FACE Board of Representatives, which includes Boone County representatives across different sectors (schools, law enforcement, court services, faith-based community, disability services, pediatrician/family practitioner, early childhood, etc.)

School-Based Services

- Regional Coordinators are assigned to all Boone County schools, including private/parochial schools, and provide services which include:
 - Administering early identification checklists to all students;
 - Providing multi-level interventions based on needs identified by the checklists;
 - Participating in problem-solving teams with school personnel;
 - Providing professional development for school personnel;
 - Offering group and individual supports (therapy, case management, etc.).
- Family Intervention Specialists are in all rural school districts and select Columbia Public School elementary buildings and provide services which include:
 - Supporting de-escalation of behavior in schools;
 - Assisting families in completing a needs-based assessment and creating an action plan to address top concerns;
 - Providing intensive therapeutic case management across systems for families;
 - Completing suicide risk assessments and safety plans with youth and their families, when needed.

IS ANYONE BETTER OFF?



26,398

students received an early identification checklist



100%

of schools implemented one or more evidence-based interventions



70%

of students receiving crisis services decreased severity of top problems

Community-Based Services

- Support families in completing a needs-based assessment and assist families in creating an action plan to address top areas of concern.
- Assist families with accessing community-based resources to meet their needs.
- Complete suicide risk assessments and safety plans with youth and their families, when needed.
- Therapy Access Program (TAP) provides access to more immediate, brief support for Boone County children, youth, and families for up to ten free therapy sessions to address mental health concerns. Families can be referred to TAP through the Community-Based Services side of FACE

IS ANYONE BETTER OFF?



62%

of individuals decreased severity of top problems



56%

of individuals engaged with outside providers



100%

of individuals that completed a suicide risk assessment developed a safety plan

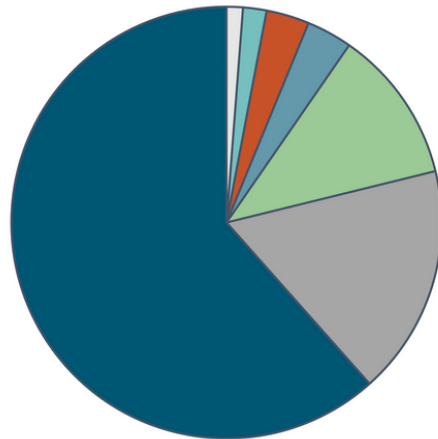
Youth & Family Support Programs

18
funded programs

Programs are designed to strengthen the family, improve parenting practices, and support healthy development for children.



5,533
individuals were served through BCCSD funding



TOTAL PROGRAM FUNDING

- Income Support & Employment (1%)
- Health & Medical (2%)
- Education (3%)
- Community Advancement (3%)
- Organizational Capacity Building (12%)
- Supportive Services (17%)
- Social Development & Enrichment (62%)



92,501
hours of out-of-school programming funded for 1,147 individuals



397
individuals maintained or improved academic proficiency



993
hours of family development funded

LILY'S SUCCESS STORY

Lily, a young girl in foster care with special needs, outgrew her wheelchair about a year ago. Her placement provider researched the options and found the perfect wheelchair for her, but had no funding to purchase it. Over the course of eight months, her Court Appointed Special Advocate (CASA) worked tirelessly to find grants and funding so she could get the wheelchair she needs. She filled out forms, made phone calls, and didn't give up until Lily got her wheelchair. She loves it and it has increased her comfort and mobility! Children are more likely to receive the services and resources they need when they have a CASA volunteer. What a difference this made for Lily!

Heart of Missouri CASA
CASA Child Advocacy



Columbia



Hallsville



1,304

hours of out-of-home
respite care funded



2,336

hours of case
management funded for
1,367 individuals



606

individuals developed
positive values, social
competencies, or identities



104

individuals developed
healthy relationships with
family members and/or
caregivers

BETHANY CHRISTIAN SERVICES OF MISSOURI

Safe Families for Children

- Bethany Christian Services of Missouri provides respite services to families during a crisis to help prevent children from entering the foster care system.
- Case managers assist families in developing and implementing a plan to improve the situation and reduce risk factors of abuse and neglect.

IS ANYONE BETTER OFF?

Amount Received:

\$17,039.00



100%

of children
remained free
from child abuse
and neglect



81%

of children
demonstrated
improved quality of the
relationship with their
parent/guardian



100%

of families
developed a
plan to meet
their goals

BOYS AND GIRLS CLUB OF COLUMBIA AREA

Great Futures Start Here

Boys and Girls Club provides after-school and summer programming designed to empower youth to excel in school, become good citizens, and lead healthy, productive lives.

IS ANYONE BETTER OFF?

Amount Received:

\$250,873.27



91%

of youth increased
knowledge of
healthy lifestyles



93%

of youth
participated in
academic
enrichment



100%

of staff reported
increased ability to
effectively manage
behaviors

CATHOLIC CHARITIES OF CENTRAL AND
NORTHERN MISSOURI (CCCNMO)

Refugee Youth Mentoring and Academic Support
Program

The program provides a weekly after-school program for refugee youth in grades K-8 in partnership with the St. Thomas More Newman Center. The program provides mentoring and academic support for youth and coordinates programming between families and teachers. The goal is to enhance refugee youth’s educational and social development and strengthen families.

IS ANYONE BETTER OFF?



95%

of youth maintained or increased their capacity to accomplish personal goals, have a positive outlook, and access social support



97%

of youth reported making a new friend by the end of the program



100%

of youth maintained or improved their academic performance

Amount Received:
\$31,468.25



Columbia



Centralia

CENTRAL MISSOURI FOSTER CARE AND ADOPTION ASSOCIATION (CMFCAA)

Amount Received:

\$9,230.36

Boone Respite Program (Odyssey)

CMFCAA provides respite events for children and youth who are in foster care or waiting to be adopted. The goal of the program is to decrease family stress, increase social skills, and strengthen relationships.

IS ANYONE BETTER OFF?



91%

of parents/guardians reported respite events enhance their emotional wellbeing



85%

of youth reported making a positive connection with a peer



44%

of parents/guardians reported respite events made a difference in keeping their foster, adoptive, and/or kinship placement stable

CENTRAL MISSOURI FOSTER CARE AND ADOPTION ASSOCIATION (CMFCAA)

Amount Received:

\$54,099.69

Family Crisis Stabilization Program

CMFCAA provides training and support services to help increase and maintain the number of licensed foster, adoptive, relative, and kinship families in Boone County.

IS ANYONE BETTER OFF?



69%

of individuals screened were appropriate for the program and received case management



45%

of families that were appropriate for the program completed the trainings



100%

of individuals completed the training to continue the adoptive license process

CHA LOW-INCOME SERVICES, INC.

Healthy Home Connections

The program provides case management and family development events to families receiving housing assistance from the Columbia Housing Authority (CHA). The goal is to help families make progress on goals and maintain housing stability.

Amount Received:
\$57,630.44

IS ANYONE BETTER OFF?



97%

of families maintained their housing



63%

of families developed goals through a Family Service Pledge



38%

of families attending family development events reported making at least one new social connection

CHA LOW-INCOME SERVICES, INC.

Moving Ahead After-School and Summer Program (MAP)

MAP provides education enrichment for children and youth of families who receive housing assistance from the CHA. The Boone County Children’s Services Fund supports out-of-school programming for youth and support services for their families.

Amount Received:
\$130,198.10

IS ANYONE BETTER OFF?



100%

of students maintained or increased their grades during the school year



95%

of students were optimistic about their future



96%

of parents reported improved parenting skills

COR COLUMBIA

Cor Columbia North Columbia Expansion

- Cor holistically serves male student athletes, working to transform futures by providing access to opportunities and resources students need to succeed. The
- goal of the program is to use academics, relationships, and life skills to help students create a pathway to a post-secondary plan following high school.

Amount Received:

\$180,560.45

IS ANYONE BETTER OFF?



98%

of students
were on track
to graduate



88%

of seniors
established post-
secondary plans



100%

of youth reported
having a
supportive adult
in their life

DISABLED ATHLETE SPORTS ASSOCIATION (DASA)

DASA COMO

DASA provides the opportunity for individuals with a physical disability to participate in adaptive sports, recreational programs, and fitness activities.

Amount Received:

\$21,071.00

IS ANYONE BETTER OFF?



100%

of participants
demonstrated
improvement and/or
achieved their
therapeutic goals



100%

of participants
participated in
consecutive
programs
throughout the year



80%

of individuals
learned a new
skill



McBaine

FUN CITY YOUTH ACADEMY

Fun City Youth Academy

Fun City Youth Academy provides out-of-school programming and academic instruction. The goal is to help students perform at grade-level proficiency in reading and math. The program also supports mental health and positive self-image.

Amount Received:

\$84,035.86

IS ANYONE BETTER OFF?



86%

of students maintained or increased their educational performance in reading



91%

of students maintained or increased their educational performance in math



76%

of students demonstrated an increase in their self-esteem and positive self-image

HEART OF MISSOURI CASA

CASA Child Advocacy

Heart of Missouri CASA provides child advocacy services for children involved in abuse and neglect court cases. Services are provided by trained volunteers to help find safe, permanent homes for children who have been abused or neglected.

Amount Received:

\$142,750.00

IS ANYONE BETTER OFF?



92%

of children with a
CASA volunteer
achieved a
permanent
outcome upon case
closure



97%

of the CASA
volunteers'
recommendations
were accepted by
the Family Court
Judge



66%

of Boone County
children in foster care
had a trained CASA
volunteer advocate

PRESBYTERIAN CHILDREN'S HOMES AND SERVICES

Therapeutic Mentoring

Trained mentors support youth to attain goals and reduce risk factors through community-based mentoring. The goal is for youth to create positive connections in the community and improve coping skills, pro-social behaviors, and self-esteem.

HOW MUCH DID WE DO?

The program has struggled to offer community-based and school-based mentoring since the COVID-19 pandemic began. Staff turnover has also impacted the ability to recruit participants for the program and deliver services. The organization is working to re-establish relationships with schools and recruit for the program. The program had four individuals enroll in the program in 2022 but did not continue services due to varying circumstances. The BCCSD is continuing to closely monitor the program.

Amount Received:

\$693.75



Columbia

RAINBOW HOUSE

Children's Emergency Shelter

The Children's Emergency Shelter provides respite care and emergency shelter services for children. The shelter provides children with a safe place to remove them from or prevent situations of abuse or neglect. Rainbow House also provides parenting skills education to at-risk parents and families to diminish child abuse and neglect.

Amount Received:
\$16,995.00

IS ANYONE BETTER OFF?



100%

of children had the opportunity to participate in a positive youth activity during their stay



18%

of parents/guardians reported decreased levels of stress



22

children received out-of-home respite care

THE SALVATION ARMY, AN ILLINOIS CORPORATION

Children's Services at Harbor House

The program provides the Love and Logic curriculum to parents with children residing at Harbor House. The goal is to increase parenting skills to reduce negative interactions that lead to stress, neglect and/or abuse.

Amount Received:
\$5,506.38

IS ANYONE BETTER OFF?



100%

of parents/guardians demonstrated positive parenting/co-parenting skills



100%

of parents/guardians were able to identify age-appropriate milestones for their child



26

parents/guardians participated in the program while residing at Harbor House



Centralia

SEED SUCCESS

BOONESAVES

SEED Success works to narrow the assets gap by focusing on lower income families to create College/Career Incentive Savings Accounts. The Children's Services Fund provides funding support to cover operational costs of managing the accounts while organization donations are used to fund the accounts. SEED Success directly connects to families through public events, organizations, and schools.

Amount Received:

\$27,082.98

IS ANYONE BETTER OFF?



83%

of individuals
enrolled in accounts
come from families
with incomes at or
below the 200%
Federal Poverty Level



471

new accounts
were created in
2022



66%

of organizations
collaborating with SEED
Success provided a
financial education
component to participants

TRUE NORTH OF COLUMBIA

True North Children's Program

The program provides children and their parents who are survivors of domestic or sexual violence with resources to promote emotional resiliency and healthy attachments. This is achieved through family education, parenting skills training, positive youth development, crisis intervention, and case management.

Amount Received:

\$29,505.00

IS ANYONE BETTER OFF?



86%

of families showed improvement in their parent/child dynamics



100%

of parents met at least one of their goals



89%

of children whose parents attended parenting sessions demonstrated improved behaviors

UNIVERSITY OF MISSOURI EXTENSION - BOONE COUNTY

Boone County 4-H Urban Youth Initiative: Growing and Diversifying Youth Support

The program goals are to develop positive values, social competencies, or identities through after-school and day camp 4-H programming. An additional goal is to grow and diversify the number of youth participating in 4-H.

Amount Received:

\$17,729.08

IS ANYONE BETTER OFF?



82%

of youth improved their social-emotional competencies



77%

of youth improved their leadership skills



76%

of youth maintained or improved their teamwork skills

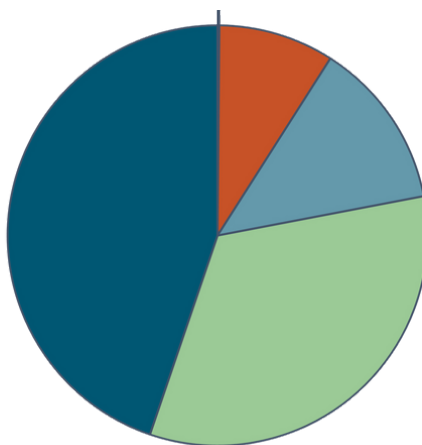
Treatment Programs

12
funded programs

Programs provide physical and mental health treatment to children, youth, parents, families, and adults.



1,237
individuals were
served through
BCCSD funding



TOTAL PROGRAM FUNDING

- Community Advancement (<1%)
- Organizational Capacity Building (9%)
- Social Development & Enrichment (13%)
- Supportive Services (33%)
- Health & Medical (45%)



628
behavioral health
assessments funded



1,727
hours of individual
therapy funded



572
individuals experienced fewer
mental, emotional, and/or
behavioral health symptoms



Columbia



Centralia



315

individuals developed healthy relationships with family members or caregivers



449

hours of family therapy funded



301

individuals developed and/or made progress toward goals to address identified needs



8,804

hours of case management funded

13TH CIRCUIT/BOONE COUNTY COURT

Child Permanency Services

The 13th Circuit Court works with Family Facets to provide home visitation and parenting skills training for families with children placed out of the home. The goal is to reduce the amount of time children are placed out of the home by increasing parental readiness for reunification.

Amount Received:

\$162,528.20

IS ANYONE BETTER OFF?



90%

of parents/guardians completing the program increased their knowledge of child development and safe parenting practices



94%

of families completing the program remained intact after 12 months



100%

of parents/guardians were assessed as being low risk for child abuse and neglect at the end of the program

BURRELL BEHAVIORAL HEALTH, INC.

Family Health Program

The program provides services for underserved clients who are 19 or younger who have behavioral health issues and their families. The goal of the program is to improve mental and behavioral functioning, daily living skills, and academic performance.

Amount Received:

\$36,344.25

IS ANYONE BETTER OFF?



82%

of individuals experienced improved family functioning



55%

of individuals improved symptoms related to depression



50%

of individuals improved symptoms related to anxiety

COMPASS HEALTH, INC.

Behavioral Health Care Programming

The program provides comprehensive, multi-faceted behavioral health care interventions which include individual and family counseling services, psychiatry, and medication management. The funding goal is to provide care for underserved and uninsured Boone County residents.

Amount Received:
\$113,183.27

IS ANYONE BETTER OFF?



93%

of individuals reported an improved quality of life during and/or following treatment



91%

of individuals experienced improved daily functioning



77%

of individuals made progress on their wellness plan

COMPASS HEALTH, INC.

Boone County Emergency Dental Referral Program

The program provides treatment for acute dental needs and preventative dental care with the goal of preventing subsequent avoidable emergency room visits in order to realize cost savings.

Amount Received:
\$48,739.00

IS ANYONE BETTER OFF?



93%

of patients had their dental pathology stabilized as a result of an extraction or basic dental service



93%

of patients had their dental pain alleviated



100%

of patients received oral health education regarding routine preventive oral health practices

COYOTE HILL

Therapeutic Interventions

The program provides trauma-informed professional care and mentoring to children in foster care to help them learn how to regulate their emotions and implement healthy coping skills. Children also have an opportunity to participate in equine-assisted activities. The goal is to equip children who have suffered abuse and neglect with skills to heal from trauma, practice new behaviors, and form lasting relationships.

IS ANYONE BETTER OFF?



91%

of children made progress on their goals set through case management



100%

of children practiced skills related to connection, compassion, and communication through therapeutic riding



96%

of parents/guardians noticed an increase in their child's confidence after completing their equine session

Amount Received:

\$106,107.19

GREAT CIRCLE

Early Assessment and Intervention for Outcomes Now (EAIS-ON)

EAIS-ON provides prevention services for at-risk Boone County children and families prior to abuse, neglect, and/or removal of a child from their home. The goal is to prevent child abuse and neglect, improve parent-child relationships, and reduce out-of-home placement.

IS ANYONE BETTER OFF?



93%

of individuals reduced negative mental health symptoms



66%

of parents decreased their level of parental stress



100%

of families did not have a child placed out of the family's home while participating in the program

Amount Received:

\$104,945.82

GREAT CIRCLE

Trauma-informed Training, Assessment, and Intervention

The program offers training to educators, mental health professionals, parents/guardians, alternative caregivers, and community members to better support children with mental health needs living in Boone County. By building an understanding of core concepts of trauma and development, program participants can then support interventions provided which are based on a child's needs.

Amount Received:

\$9,305.21

IS ANYONE BETTER OFF?



43%

of individuals
reported improved
symptoms related to
trauma



90%

of individuals trained
demonstrated
knowledge about
child development



90%

of individuals trained
increased confidence
in providing support
to trauma survivors

HEARTSPACE CLINIC

Technology Enhanced Mental Health

The program offers two types of treatment interventions to adults and children with a history of trauma. HeartMath utilizes assistive technology to provide immediate heart rate variability feedback so clients can practice self-regulation techniques to improve resilience and general health. The Safe and Sound Protocol targets auditory sensitivities found in those who have experienced trauma or traumatic stress to improve listening and social engagement behaviors.

Amount Received:

\$78,575.05

IS ANYONE BETTER OFF?



50%

of adults had
improved mood and
behavior after
completing the Safe
and Sound Protocol



82%

of adults had
decreased trauma
symptoms after
completing the Safe
and Sound Protocol



63%

of children had
decreased trauma
symptoms after
completing the Safe
and Sound Protocol

PHOENIX PROGRAMS, INC.

Guiding Good Choices Prevention Program

The program provides intense prevention services and education to parents, teachers, and community members to reduce the risk of children developing substance use issues.

Amount Received:

\$80,848.36

IS ANYONE BETTER OFF?



81%

of individuals
reported
improved family
relationships



70%

of individuals
reduced their risk
of developing
substance use
issues



89%

of parents/guardians
reported being given
tools to promote a
healthy home
environment

PHOENIX PROGRAMS, INC.

Outpatient Substance Use Treatment

The goals of the program are to improve the health and quality of life of individuals impacted by alcohol and other drug use disorders through improved access to treatment and community collaboration.

Amount Received:

\$23,956.14

IS ANYONE BETTER OFF?



73%

of individuals
reported improved
family
relationships



76%

of individuals reported
a reduction in mental,
emotional, and/or
behavioral symptoms



80%

of individuals
abstained from alcohol
abuse at a six month
follow-up



Hallsville

UNIVERSITY OF MISSOURI – PSYCHOLOGICAL SERVICES CLINIC

MU Center for Evidence-Based Youth Mental Health

The program provides evidence-based assessment and treatment for children, adolescents, and their families for a variety of emotional and behavioral difficulties. Training and workshops on evidence-based practices are also offered to community mental health providers.

Amount Received:
\$253,442.00

IS ANYONE BETTER OFF?



70%

of youth showed improvements in mental and behavioral health conditions



97%

of youth showed improvement in adaptive functioning



97%

of youth who completed the program did not require hospitalization or other intensive intervention

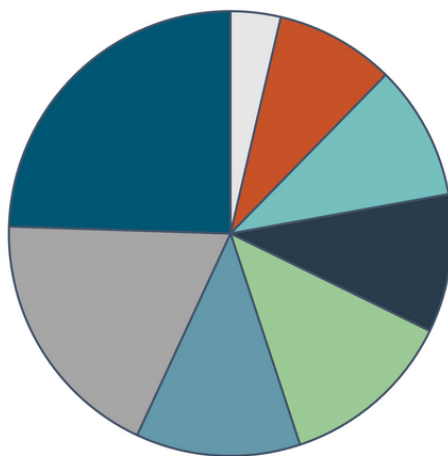
Community Support & Basic Needs Programs

15
funded
programs









Programs included provision of basic needs, vocational training, emergency shelter, health education, and services to support independent living for seniors.

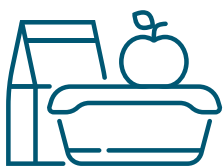


27,972
individuals were
served through
BCCSD funding



TOTAL PROGRAM FUNDING

-  Organizational Capacity Building (4%)
-  Health & Medical (9%)
-  Community Advancement (10%)
-  Housing (10%)
-  Education (12%)
-  Income Support & Employment (13%)
-  Supportive Services (18%)
-  Basic Needs (24%)



23,593
individuals
supported to receive
basic needs items



3,068
hours of case
management and service
coordination funded



407
individuals developed
and/or maintained a
healthy lifestyle

ROSE'S SUCCESS STORY

A Columbia Police Department officer came to Voluntary Action Center (VAC) asking about assistance for car seats due to three young children being placed in their grandmother's immediate care. Family Support Division loaned car seats to Rose, the grandmother, but she needed to return them as quickly as possible. Thanks to the quick thinking of the officer, he was able to relay the message back to the grandmother who then called VAC to complete an intake to determine eligibility. A VAC staff member scheduled a same-day emergency car seat appointment for Rose and her grandchildren through Safe Kids. Rose later walked into VAC's lobby to receive diapers, wipes, and emergency food to help with the increase in her household. She was extremely thankful for the assistance. A VAC staff member called the officer to let him know that his extra care and effort to help the grandmother really made a difference for her and her three grandchildren.

Voluntary Action Center (VAC)
VAC Basic Needs Program

DARIUS' SUCCESS STORY

Darius was accepted into the YouthBuild Program after completing a three-week orientation. While in the program, Darius completed his high school education by taking the HiSET test. He also completed his National Center for Construction Education and Research (NCCER) certification, First Aid/CPR training, and OSHA 10. Upon completing these, Darius made a decision to move forward and enter Job Point's Intermediate Construction Trades Program. So far, Darius has completed three out of the nine tests for Carpentry Level 1.

During his spare time, Darius asked if he could obtain a certification in food handling. He completed OSHA's 360 two-hour training and earned his Learn2Serve Food Handling Course certificate.

Darius has secured his driver's license to better help his employment opportunities while he completes Job Point programming. Darius always volunteers to help other students with learning issues and is a true leader.

Job Point
*AmeriCorps & Vocational Skills
Training Programs*



51

individuals obtained
employment or participated in
an internship



108

individuals obtained job
readiness skills



Ashland

COLUMBIA/BOONE COUNTY DEPARTMENT OF PUBLIC HEALTH AND HUMAN SERVICES

Amount Received:

\$30,000.00

Boone County Food Policy Council

Funding supports the development of a Food Policy Plan and educational materials based on best-practices and community data to increase access to healthy food throughout Boone County.

HOW MUCH DID WE DO?



Provided educational presentations on food-related issues



Shared community resources on the food system with stakeholders



Applied for ongoing funding support and pending contract execution

COLUMBIA/BOONE COUNTY DEPARTMENT OF PUBLIC HEALTH AND HUMAN SERVICES

Amount Received:

\$24,217.94

Live Well Boone County

The program provides health education classes, measures blood pressure of participants, and encourages healthy lifestyles at places of worship with congregations that are predominately people of color to reduce health disparities.

IS ANYONE BETTER OFF?



89%

of church attendees reported they can eat healthy when food is provided at their church



79%

of church attendees reported getting at least 30 minutes of physical activity most days



78%

of church attendees reported being able to be physically active at their church

COLUMBIA CENTER FOR URBAN AGRICULTURE

Doctor's Orders: A Produce Prescription Pilot

People with low-income who are at risk of or currently have diet-related chronic diseases can receive a six-month “prescription” for fruits and vegetables at the Columbia Farmers Market. The goal is to reduce health care use and expenses by increasing produce consumption and food security.

Amount Received:
\$65,594.90

IS ANYONE BETTER OFF?



96%

of individuals using their food prescription reported an improvement in their health or their family's health



99%

of individuals reported being better able to afford fresh fruits and vegetables



99%

of individuals reported an increase in their fruit and vegetable consumption

COLUMBIA CENTER FOR URBAN AGRICULTURE

Encouraging Healthy Habits at Columbia's New Agriculture Park

The program provides nutrition- and garden-based programming at the Agriculture Park to improve fruit and vegetable consumption for all ages.

Amount Received:
\$30,108.16

IS ANYONE BETTER OFF?



74%

of children stated they gained knowledge related to gardening and nutrition



78%

of children stated they wanted to eat more fruits and vegetables



49%

increase in SNAP/WIC match spending at the farmers market compared to previous year

THE FOOD BANK FOR CENTRAL AND NORTHEAST MISSOURI, INC.

Amount Received:

\$49,999.98

Central Pantry

The goal of this program is to reduce food insecurity by providing supplemental food to low-income individuals in Boone County and increase access to nutritious foods by distributing foods such as fresh produce, protein, and dairy.

IS ANYONE BETTER OFF?



84%

of survey respondents agreed or strongly agreed that receiving food from the pantry gave them a meal when they otherwise wouldn't have had one



94%

of survey respondents agreed or strongly agreed that receiving food from the pantry helped their household eat more healthfully



Columbia

FOSTERING LIFE-CHANGING OPPORTUNITIES
(FLOURISH)

Amount Received:
\$47,538.66

Flourish Prep Internship Program

The program offers paid internships at Veterans United that include professional development and supportive services. Funding from the Boone County Children’s Services Fund supports case management offered to interns and hosts safe community events for youth. The goal is to improve economic and social mobility for marginalized youth.

IS ANYONE BETTER OFF?



100%

of interns improved their ability to write their resume



71%

of interns obtained part-time employment or connected to a post-secondary education opportunity



100%

of interns were able to express their positive values, strengths, and social competencies relevant to employment



Rocheport



Centralia

IN2ACTION

Recovery Support and Reentry Opportunity Center

The Reentry Opportunity Center (The ROC) provides comprehensive reentry services to adult men and women who have been recently released from jail or prison. The ROC serves as a one-stop resource center where people can access numerous services and providers under one roof.

Amount Received:

\$33,104.20

IS ANYONE BETTER OFF?



88%

of participants did not return to jail or prison within one year



97%

of participants addressed at least two identified criminogenic needs



91%

of participants would recommend The ROC to others

JEFFERSON CITY AREA YMCA

Healthy Hometown - Southern Boone County

The goal of this program is to promote the health and well-being of both children and adults in Southern Boone County. The program provides physical activity training for adults transitioning from physical therapy with the goal of addressing chronic disease risk factors. YMCA also provides programming in Southern Boone County Schools to encourage students to make healthy choices related to physical activity, nutrition, and limiting screen time.

Amount Received:

\$49,901.42

IS ANYONE BETTER OFF?



71%

of adults lowered their percentage of body fat



55%

of adults reported decreased levels of pain



86%

of youth reported they mostly or always try to be more physically active



Hallsville

JOB POINT

AmeriCorps

The program provides academic instruction for participants to take the High School Equivalency Test (HiSET). The goal is to support young adults in obtaining a high school diploma equivalency, leading to economic independence. Funding from the Boone County Children's Services Fund is limited to support 16 to 18-year-olds.

Amount Received:

\$99,333.00

IS ANYONE BETTER OFF?



21%

of students obtained a
high school diploma or
equivalent

Job Point noted the difficulty of students completing the HiSET exam due to no testing site being located in Columbia throughout 2022. The cost and logistics of transporting students to a testing site created a barrier for students to take the exam. However, Douglass High School was approved as a testing site in late 2022. The BCCSD will continue to closely monitor performance measures.

JOB POINT**Vocational Skills Training**

- The program provides vocational trades training to youth who are economically-disadvantaged. The goal of this program is to provide education and training to
- equip people with knowledge, skills, and/or competencies to achieve a
- recognized credential.

Amount Received:**\$6,016.17****IS ANYONE BETTER OFF?****47%**

of students received
their trade's credential

**71%**

of individuals completing their
training entered employment
within 12 months

THE SALVATION ARMY, AN ILLINOIS CORPORATION*Harbor House Emergency Shelter*

Harbor House provides shelter to improve the well-being, personal safety, and the physical, mental, and emotional health of adults and families experiencing homelessness.

IS ANYONE BETTER OFF?Amount Received:**\$54,993.79****100%**

of individuals served
were safely sheltered

**4.26**

score out five received from participants
for providing necessary services to help
gain independence and housing

SERVICES FOR INDEPENDENT LIVING (SIL)

Senior Connect

SIL provides services for seniors that include: food delivery, friendly visiting, home repair, lawn care, and case management. The goal of the program is to help low-income seniors live independently, make homes safe, and alleviate isolation/depression while improving overall quality of life and health.

Amount Received:

\$41,885.29

IS ANYONE BETTER OFF?



97%

of seniors reported that social support services impacted their ability to live independently in the community



98%

of seniors reported satisfaction with their quality of life



85%

of seniors achieved or made progress on their self-identified goals

SUSTAINABLE FARMS AND COMMUNITIES

Access to Healthy Food

The program provides a financial match for SNAP and WIC participants at the Columbia Farmers Market. The goal of the program is for individuals to experience lower rates of stress related to food insecurity and for one or more family members to experience positive changes in health status attributed to their access to fresh, local products from the market.

Amount Received:

\$57,096.75

IS ANYONE BETTER OFF?



95%

of survey respondents reported a reduction in stress levels after enrolling in the program



73%

of survey respondents reported some sort of change in health for at least one family member



14%

increase in SNAP/WIC match spending by program participants at the farmers market compared to previous year

VOLUNTARY ACTION CENTER (VAC)

VAC Basic Needs Program

The program provides a variety of services that specifically address and meet needs for assistance with health, employment, and safety for low-income Boone County residents.

Amount Received:

\$35,275.00

IS ANYONE BETTER OFF?



99%

of VAC clients surveyed reported their level of stress was significantly lowered upon receiving basic needs items



99%

of VAC clients surveyed reported their basic need was met by receiving services

VOLUNTARY ACTION CENTER (VAC)

VAC Housing Program

The program helps low-income Boone County residents gain stability in their housing situations by moving into permanent housing or receiving support to remain in their current housing.

Amount Received:

\$84,520.18

IS ANYONE BETTER OFF?



100%

of individuals remained housed after 90 days



100%

of individuals reported improvement in their mental and/or physical well-being



100%

of individuals, while participating in the program, reported remaining free of interaction with law enforcement or reentry into the justice system

WOODHAVEN

EnCircle Technologies

Operating under Woodhaven, EnCircle Technologies provides individuals with autism and other forms of neurodiversity an opportunity to learn technology and develop soft skills through classes and internships.

Amount Received:
\$96,243.19

IS ANYONE BETTER OFF?



100%

of individuals demonstrated at least one skill gained based on the class objective



100%

of individuals participating in job readiness training reported improving their social communication



100%

of families, businesses, and stakeholders increased knowledge of employment programs



Columbia

Community Collaboration

Boone Impact Group

The Boone Impact Group (BIG) is a unique collaboration between the Columbia/Boone County Department of Public Health and Human Services, Boone County Community Services Department, Heart of Missouri United Way, Central Missouri Community Foundation, and Veterans United Foundation. This group shares information to prevent duplicating work as funders and to ensure that organizations are receiving adequate funding and support. Through this collaboration, BIG is playing a critical role in identifying resource gaps, helping organizations to maximize their services, and coordinating the strengths and abilities of the human services sector to tackle challenging social issues together.



The BIG partners have developed the Taxonomy of Services, which aligns the type and definitions of services to be consistent across local funders with the purpose of having a universal language for services being provided among organizations. BIG released common outcomes to help local funders better tell the story of how contracted services impact community-level issues and indicators. Alignment of outcomes shows the impact of services and programs across the community.

Boone Indicators Dashboard

The Boone Indicators Dashboard (BID) presents a variety of health, educational, social, economic, and housing data for issues relevant to Boone County, Missouri. The purpose of the BID project is to make this information readily available to diverse community stakeholders who require data to more effectively inform and align community planning, resource investment, and performance management and monitoring.



Please visit www.booneindicators.org for more information, BID's aspirational statements, local equity analysis, and data. This is a project of Boone County, City of Columbia, Heart of Missouri United Way, and the University of Missouri Institute of Public Policy.



Rocheport



Hallsville



Harrisburg

Brighter Beginnings

Brighter Beginnings is a collaborative initiative of the Boone County Community Services Department, the Columbia/Boone County Department of Public Health and Human Services, local family social services agencies, and Boone County home visiting provider agencies. Brighter Beginnings connects Boone County's most vulnerable families to supports that optimize the beginning years of life. The mission of this coalition is to support all families toward health, well-being, and a bright future in Boone County through prioritization and coordination of local home visiting resources.



Bringing Results-Based Accountability to Boone County

The BCCSD has consistently seen the need of increasing capacity for nonprofit and community leaders to engage in measuring and improving the lives of individuals, families, and our community. However, cost constraints have hindered the ability of the BCCSD, nonprofits, and community leaders to engage in this level of training and collective impact. Our department received funding from the Missouri Foundation for Health to train nonprofit leaders, local leaders, elected officials/department leaders within the County, and community members in the Results-Based Accountability (RBA) framework. RBA is an action-oriented and evidence-based methodology for producing measurable improvements for individuals and communities. The framework can be used both at a community level and within organizations and programs. Training and support will be offered to those interested in RBA through 2025.



Upward Mobility Action Plan

Project Overview

Boone County was one of eight counties nationwide to join the Urban Institute's Upward Mobility Cohort. Since the beginning of 2021, the Urban Institute provided awardees with funding, technical assistance, and peer learning opportunities to help communities develop a Mobility Action Plan aimed at improving upward mobility from poverty and reducing racial inequities. Boone County's Mobility Action Plan describes goals, strategies, and target outcomes for boosting mobility from poverty. The plan includes information about the project, the planning process, and strategies selected by the community to improve upward mobility from poverty.

Boone County announced the Upward Mobility award in May 2021 and held a Data Walk in August 2021. Priorities selected at the Data Walk informed the creation and direction of workgroups which would build our community's plan. Each workgroup, led by Stakeholder Facilitators, engaged in the Results-Based Accountability planning process to develop the Mobility Action Plan. Engagement and participation in planning efforts included individuals most impacted by the problem, those with lived experience, community leaders, community stakeholders, and elected officials joining as equal planning partners.

Workgroups - Result Statements

The Mobility Action Plan contained an aspirational result each group hopes to see for our community. The result statement was followed by indicators, root causes, and strategic actions.



Early Grade Literacy

All children in Boone County learn to read and see themselves as readers and writers.



Fair & Inclusive Housing

All people in Boone County have safe, quality, and affordable housing.



Jobs & Workforce Development

Boone County is a flourishing community where everyone can live, learn, and grow.

Sustainability

The Boone County Community Services Department (BCCSD) will continue to contribute to planning, outreach, and implementation of strategic outcomes across workgroups. Additionally, the BCCSD will release community reports with annual updates to the Mobility Action Plan and share the work of all workgroups at least through 2026. Metrics related to Upward Mobility will be published through the Boone Indicators Dashboard, which will be facilitated by the BCCSD.

The full report and a condensed version are available at <https://www.showmeboone.com/community-services/upward-mobility.asp>.



Centralia



McBaine



Rocheport



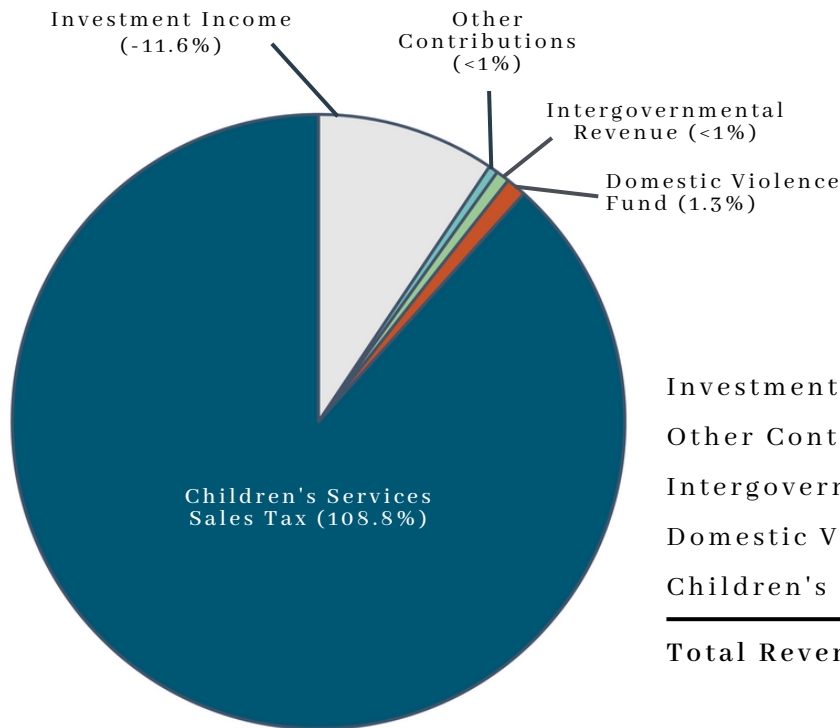
Ashland



Hallsville

Financial Summary

Revenues

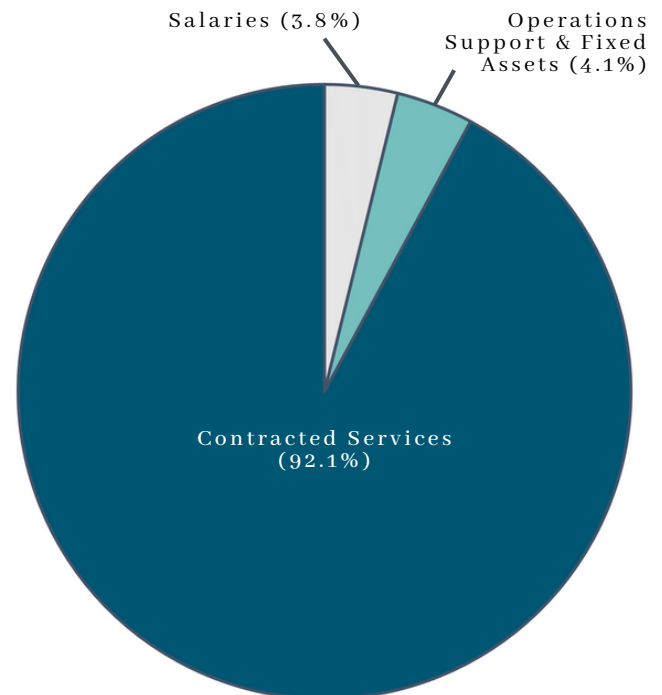


Investment Income*	(\$906,262)
Other Contributions	\$48,032
Intergovernmental Revenue	\$68,015
Domestic Violence Fund	\$102,656
Children's Services Sales Tax	\$8,498,293
Total Revenue	\$7,810,734

Expenses

Salaries	\$379,343
Operations Support & Fixed Assets	\$401,186
Contracted Services	
• Services for Children, Families, & Individuals	\$9,038,785
• Professional Services	\$50,803
Total Expenses	\$9,825,892
Release of Prior Year Encumbrances (\$44,225)	

*The Boone County Treasurer's Office combines funds into a single investment portfolio with low-risk investments. The change in fair value number indicates potential loss if sold immediately, but since investments mature as needed, there's no plan to sell early. Treasury bills and bonds pay coupon payments based on interest rates, and the fair value change reflects market value fluctuations if sold today. However, if held until maturity, the initial investment is returned regardless.



Community Investment

Children's Services Fund

The Children's Services Fund (CSF) tax began in 2013 and the BCCSB began contracting with programs in 2014. The tax revenue is received through the ¼ cent sales tax, which created the CSF and covers costs to administer the CSF. Organizations are contracted through a purchase of service model, where services are delivered for a set rate and reimbursed by the CSF. The overall contracted amount is higher than what is actually utilized for the fiscal year due to this structure. Administrative costs include personnel costs, supplies, training, utilities, insurance, and services from other offices such as the Auditor's Office, Purchasing Department, Legal Services, and Facilities Maintenance Department. Key takeaways can be seen in the graph below:

- Tax revenues have generated an average of \$6.8 million a year. There was a 9% growth in tax revenues between 2021 and 2022.
- Contracted amounts and utilization have been higher than tax revenues in order to lower the fund balance. Fund Balance is the net difference between the assets and liabilities of a governmental fund. It is not cash on hand; instead, throughout the year, significant portions of fund balance consist of receivables associated with property taxes, sales, taxes, and reimbursement revenues. Because of this and to ensure adequate cash flow, County policy requires a minimum fund balance equal to two months' expenditures (17%).
- Administrative costs are historically low compared to the tax revenues. Most of the funds go to supporting children, youth, and their families.

CHILDREN'S SERVICES FUND - TAX REVENUES, CONTRACT UTILIZATION, AND ADMINISTRATIVE COSTS (IN MILLIONS)



Community Health/Medical Fund

The Community Health/Medical Fund stopped receiving revenues in 2021 and will be greatly missed. The funding was able to support Boone County adults without children and strategically fund gaps between the local funders. The lease was not renewed when Boone Health became an independent entity and investment into the Community Health/Medical Fund was not continued. Current contracts funded through the Community Health/Medical Fund ended December 31, 2022.

2022 Community Services Department Staff

Joanne Nelson, Director
Kristin Cummins, Program Manager
Gina Jenkins, Data and Performance Analyst
D'Andre Thompson, Program, Diversity, Equity, and Inclusion Specialist
Michelle Thompson, Program Specialist
Kerby Sloyer, Administrative Coordinator

Former Staff Members:

Megan Corbin Bania (*Data and Performance Analyst until September 2022*)

Boone County Commissioners

Dan Atwill, Presiding Commissioner
Justin Aldred, District I Commissioner
Janet Thompson, District II Commissioner

Boone County Children's Services Board Members

Les Wagner, Chair
Gregory Grupe, Vice Chair
Connie Leipard, Treasurer
Robert Aulgur
Lynn Barnett
Michele Kennett
Wiley Miller
Leigh Spence
Craig Stevenson

Community Health Advisory Council

Commissioner Janet Thompson
Jed Angell
Stephanie Browning
Linda Cooperstock
Barbara Weaver



Community Services Department

605 E. Walnut, Suite A
Columbia, MO 65201
(573) 886-4298
www.showmeboone.com/communityservices

