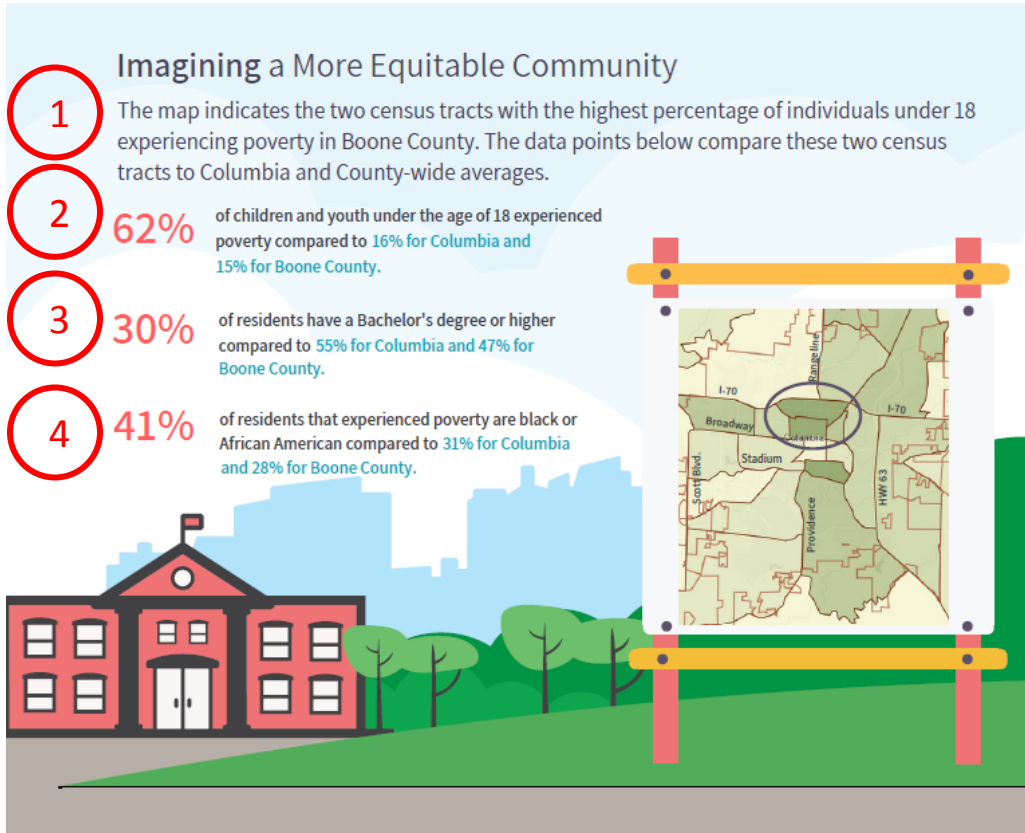


## A Focus on Poverty – Boone County, Missouri (2018)

### Boone County Community Services Department

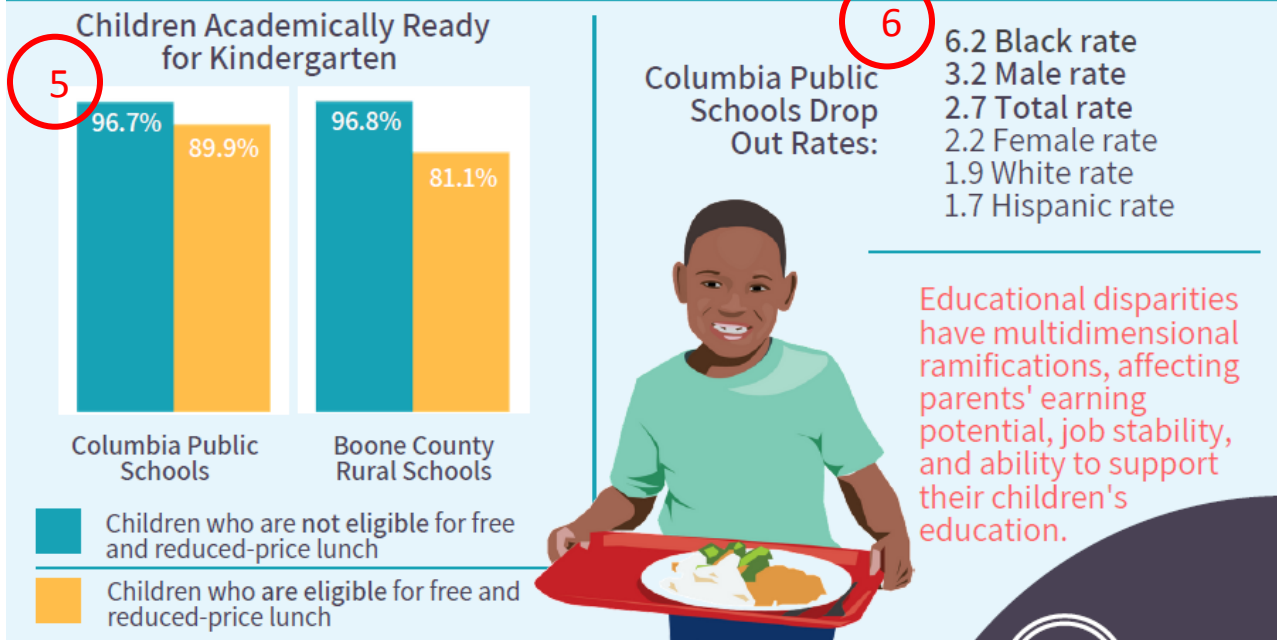
#### Appendix

This appendix was created in correspondence to the 2018 Poverty Report created by the Boone County Community Services Department. References are provided for each data point and provide an explanation on how information in the report was developed. For questions regarding the report, please contact the Boone County Community Services Department at (573) 886-4298 or email [communityservices@boonecountymo.org](mailto:communityservices@boonecountymo.org).



Ref #	Source	Notes
1	<a href="#">ACS – Poverty Status in the Past 12 Months (2012-2016)</a>	Determined by exporting data into excel and sorting all census tracts by the % of population under 18 years. This population was selected due to a high percentage of college students living in Columbia.
2	<a href="#">ACS – Poverty Status in the Past 12 Months (2012-2016)</a>	<ul style="list-style-type: none"> <li>• Calculated average % of population under 18 years for census tract 9 and 21.</li> <li>• Utilized % for Columbia city, MO; Columbia, MO Metro Area</li> <li>• Utilized the % for Boone County under 18.</li> </ul>
3	<a href="#">ACS – Educational Attainment (2012-2016)</a>	<ul style="list-style-type: none"> <li>• Calculated average % with a bachelor’s degree or higher for census tract 9 and 21.</li> <li>• Utilized % for Columbia city, MO; Columbia, MO Metro Area</li> <li>• Utilized the % for Boone County with a bachelor’s degree or higher.</li> </ul>
4	<a href="#">ACS – Poverty Status in the Past 12 Months (2012-2016)</a>	<ul style="list-style-type: none"> <li>• Calculated average % of population that is Black or African American alone for census tract 9 and 21.</li> <li>• Utilized % for Columbia city, MO; Columbia, MO Metro Area</li> <li>• Utilized the % of population that is Black or African American alone for Boone County.</li> </ul>


# POVERTY IS EXPERIENC



Reference #	Source	Notes
5	<a href="#">Cradle to Career Alliance – 2017 Community Report Card</a>	Data can be found on page 10
6	<a href="#">Missouri Department of Elementary and Secondary Education (DESE) – District and School Information (District Annual Dropout Rate – excel)</a>	<ul style="list-style-type: none"> <li>2017 data for Columbia district.</li> <li><a href="#">DESE's drop-out definition and rate calculation</a></li> </ul>
7	<a href="#">Boone Indicators Dashboard – Poverty Rate by Educational Attainment (ACS Indicator Data)</a>	2016 data for Boone County

# ED IN MULTIPLE FORMS

**8**



**\$803**

average monthly rent

**50% = \$19,272**

A household needs a minimum net income of \$19,272 to not be severely rent burdened by the average rental cost in Columbia.

**9**

**30% = \$32,112**

A household needs a minimum net income of \$32,112 to not be cost burdened by the average rental cost in Columbia.

**10**


**HUD Definitions**

Severe Rent-Burdened - those who pay more than 50 percent of their income for housing.

Cost-Burdened - those who pay more than 30 percent of their income for housing.

**11**


**12,782 cost burdened renters in Columbia**



**12**

**Households Spending Over 30% Income on Housing**

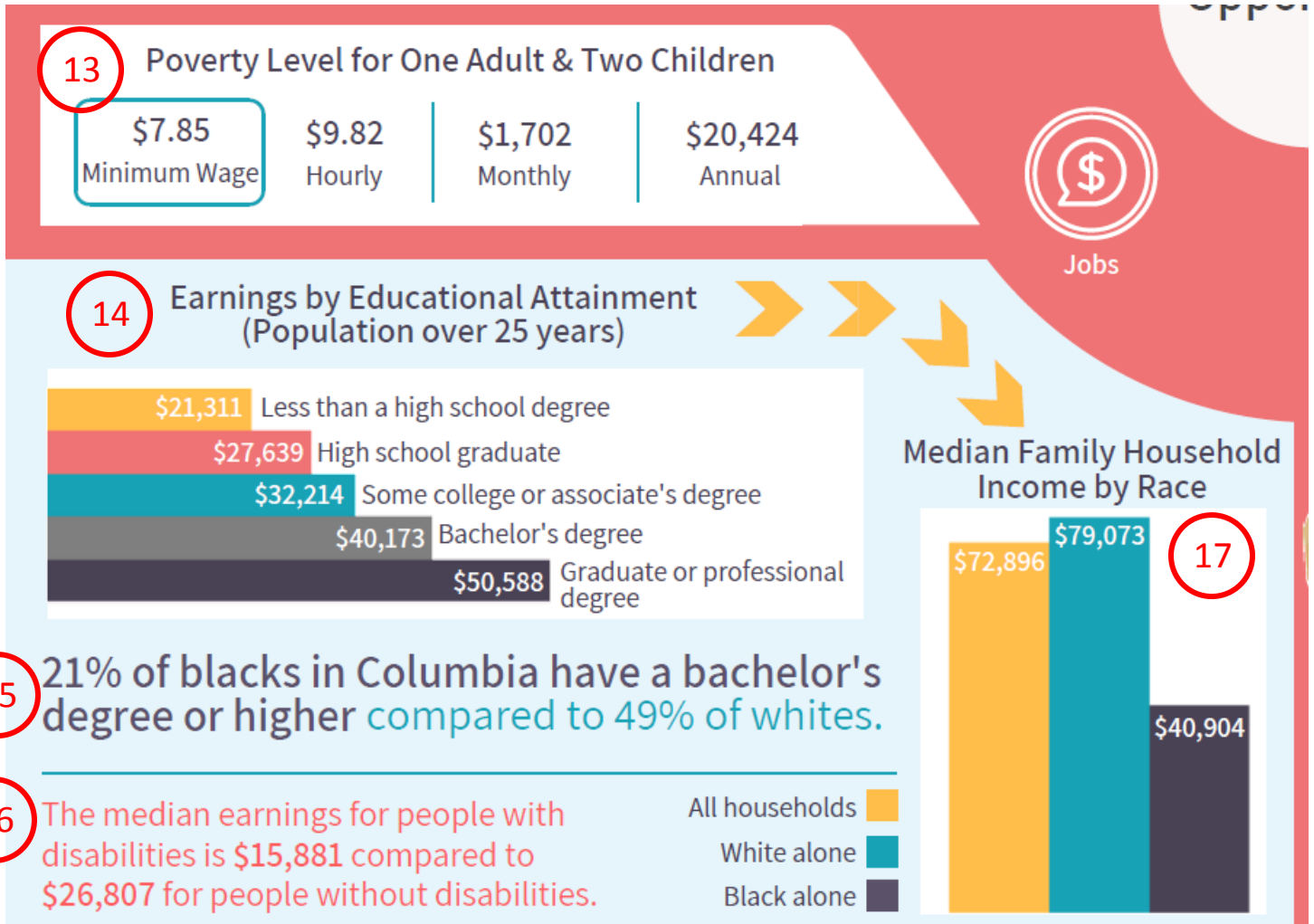
31% of households are cost burdened in Boone County.	53% of renters are cost burdened in Boone County.	16% of home owners are cost burdened in Boone County.
--	---	---



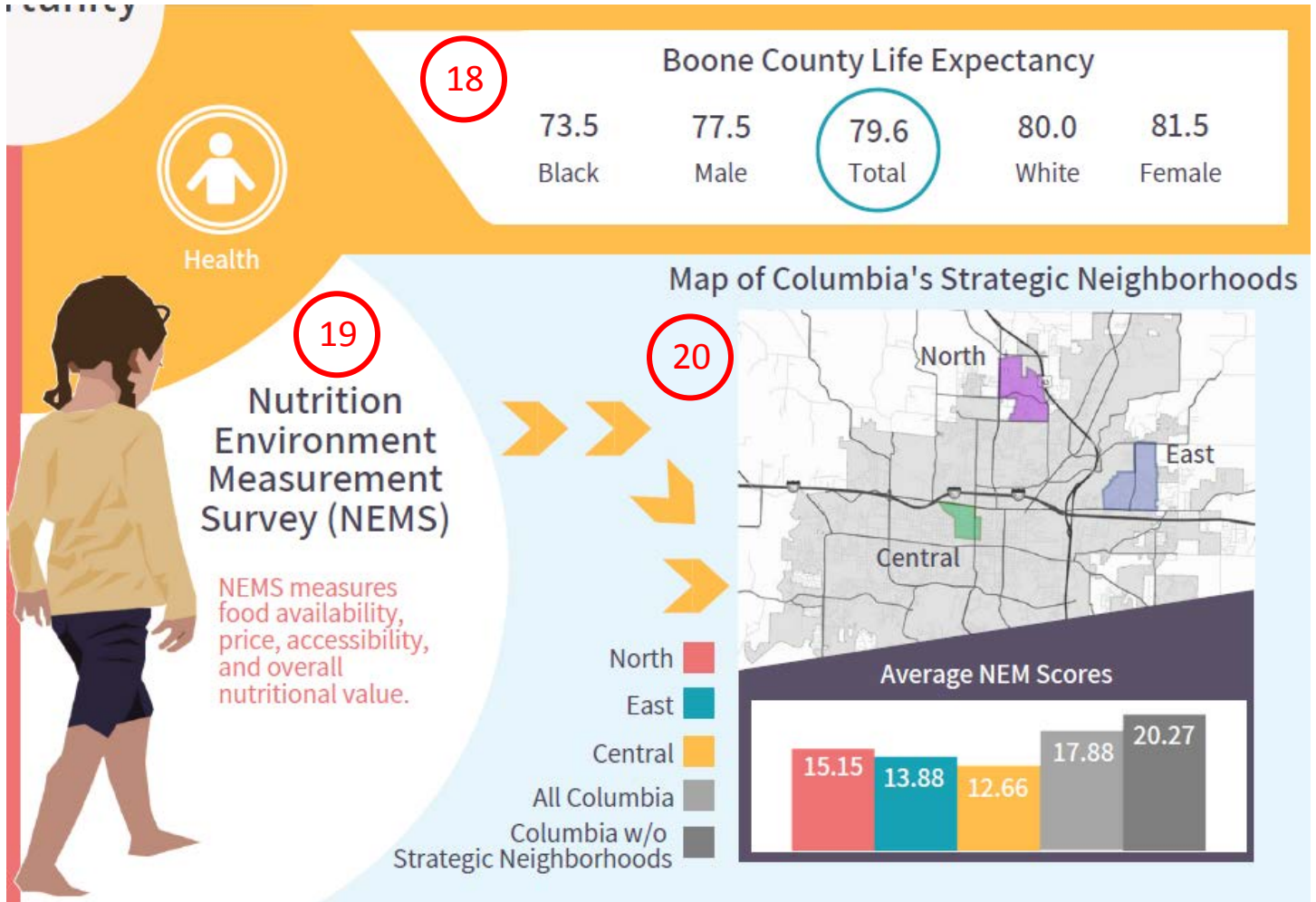
Housing

tunity

Reference #	Source	Notes
8	<a href="#">ACS – Median Gross Rent (Dollars) (2012-2016)</a>	Indicator also provided by the City of Columbia Community Development Department (Housing and CDBG Programs).
9	<a href="#">Average rental rate utilized by ACS indicator (above)</a>	BCCS staff calculated what the minimum income a renter in Columbia would need to be cost burdened or severely cost burdened with the average rental rate in Columbia.
10	<a href="#">HUD – Affordable Housing</a>	Definition utilized from HUD
11	<a href="#">ACS - Selected Housing Characteristics (2012-2016)</a>	2012-2016 data for Columbia city, MO; Columbia, MO Metro Area
12	<a href="#">Boone Indicators Dashboard – Households Spending Over 30% of Income on Housing (Adjusted) (ACS Indicator Data)</a>	2015 data for Boone County



Reference #	Source	Notes
13	<a href="#">Boone Indicators Dashboard – Socio-Economic and Health Inequity (Columbia/Boone County Department of Public Health and Human Services)</a>	<ul style="list-style-type: none"> <li>MO Department of Labor and Industrial Relations minimum wage as of 8/1/2018</li> <li>Poverty Level for One Adult and Two Children information used from slide 9.</li> </ul>
14	<a href="#">Boone Indicators Dashboard – Median Earnings by Educational Attainment, Individuals 25 and Older (2012-2016) (ACS)</a>	2012-2016 data for Boone County
15	<a href="#">ACS – Educational Attainment (2012-2016)</a>	2012-2016 data for Boone County
16	<a href="#">ACS – Selected Economic Characteristics for the Civilian Noninstitutionalized Population by Disability Status (2012-2016)</a>	2012-2016 data for Boone County
17	<a href="#">Boone Indicators – Median Income Family Households (2012-2016) (ACS)</a>	2012-2016 data for Boone County



Reference #	Source	Notes
18	<a href="#">Missouri Department of Health and Senior Services – Life Expectancy (2004-2012)</a>	2004-2012 data for Boone County
19	<a href="#">University of Pennsylvania – Nutrition Environment Measures Survey</a>	Definition used from NEMS website
20	<a href="#">Build this Town – Community Food Assessment</a>	Data collected and processed by Heather Gillich Consulting, LLC