

Boone County Community Services Department

2016 Annual Report and Program Directory



Table of Contents

Letter from the Director	3
Community Services Department Organizational Chart	4
Children's Services Fund Overview	5
2016 Overview of Services	6
Children's Services Fund: 2016 Program Outcomes	8
Boys & Girls Club	8
Burrell Behavioral Health	9
Central Missouri Community Action	10
Central Missouri Foster Care and Adoption Association	10
CHA Low-Income Services	11
Child Abuse and Neglect Emergency Shelter, Inc. dba Rainbow House	12
Columbia/Boone County Department of Public Health and Human Services	14
Compass Health Inc. dba Family Counseling Center of Missouri, Inc.	14
First Chance for Children	15
Fun City Youth Academy	15
Great Circle	16
Harrisburg Early Learning Center	16
Heart of Missouri CASA	17
Lutheran Family and Children's Services of Missouri	17
Missouri Girls Town/Presbyterian Children's Homes and Services	18
Nora Stewart Early Learning Center	19
Phoenix Programs	19
Sustainable Farms and Communities	20
University of Missouri (on behalf of Aaron Thompson PhD, Wendy Reinke PhD, Keith Herman PhD, Kristin Hawley PhD)	21
University of Missouri (on behalf of the Boone County Schools Mental Health Coalition)	21
University of Missouri (on behalf of Department of the Psychiatry)	22
University of Missouri (on behalf of the Division of General Pediatrics)	23
University of Missouri (on behalf of the Psychological Services Clinic)	24
Youth Empowerment Zone	25
Community Health Fund: 2016 Program Outcomes	26
Columbia/Boone County Department of Public Health and Human Services	26
Family Health Center of Boone County	27
The Food Bank for Central and Northeast Missouri, Inc.	27
Independent Living Center of Mid-Missouri, Inc.	28
Mary Lee Johnston Community Learning Center	28
Phoenix Programs	29
Public Administrator of Boone County	29
The Salvation Army	30
University of Missouri (on behalf of the Adult Day Connection)	30
Voluntary Action Center	31
Community Health Fund Strategic Opportunities	31
Community and Social Services Fund	32
Domestic Violence Fund	32
Boone County Community Services Funded Organization Directory	33
Boone County Community Services Collaboration Efforts	37

Letter from the Director

I am pleased to present the Boone County Community Services Department 2016 Annual Report and Program Directory. The Community Services Department was established in 2014 and is responsible for the administration of the Children's Services, Community Health, Domestic Violence, and Social Services Funds for a combined budget of over \$7 million a year.

The Community Services Department funds 47 programs aimed at improving the lives of Boone County residents. Each funded program is required to submit reports semi-annually to demonstrate the impact of the program services on the individual, family, and community. The following pages provide information about each of the programs, including the services provided, the goal of the program, the number of individuals served, the amount of funds received, and the impact of the services.

Organizations apply for funding by submitting a proposal in response to a Request for Proposals or by submitting an application through the Strategic Innovation Opportunity Fund. Organizations are typically funded through a purchase of service model; however, there may be different funding structures depending on the program and how services are delivered. In 2016, a Request for Proposals was issued seeking programs to provide prevention services for children aged zero to five. It is expected that two contracts will be entered into in 2017 in response to the Early Childhood Prevention Programs Request for Proposals.

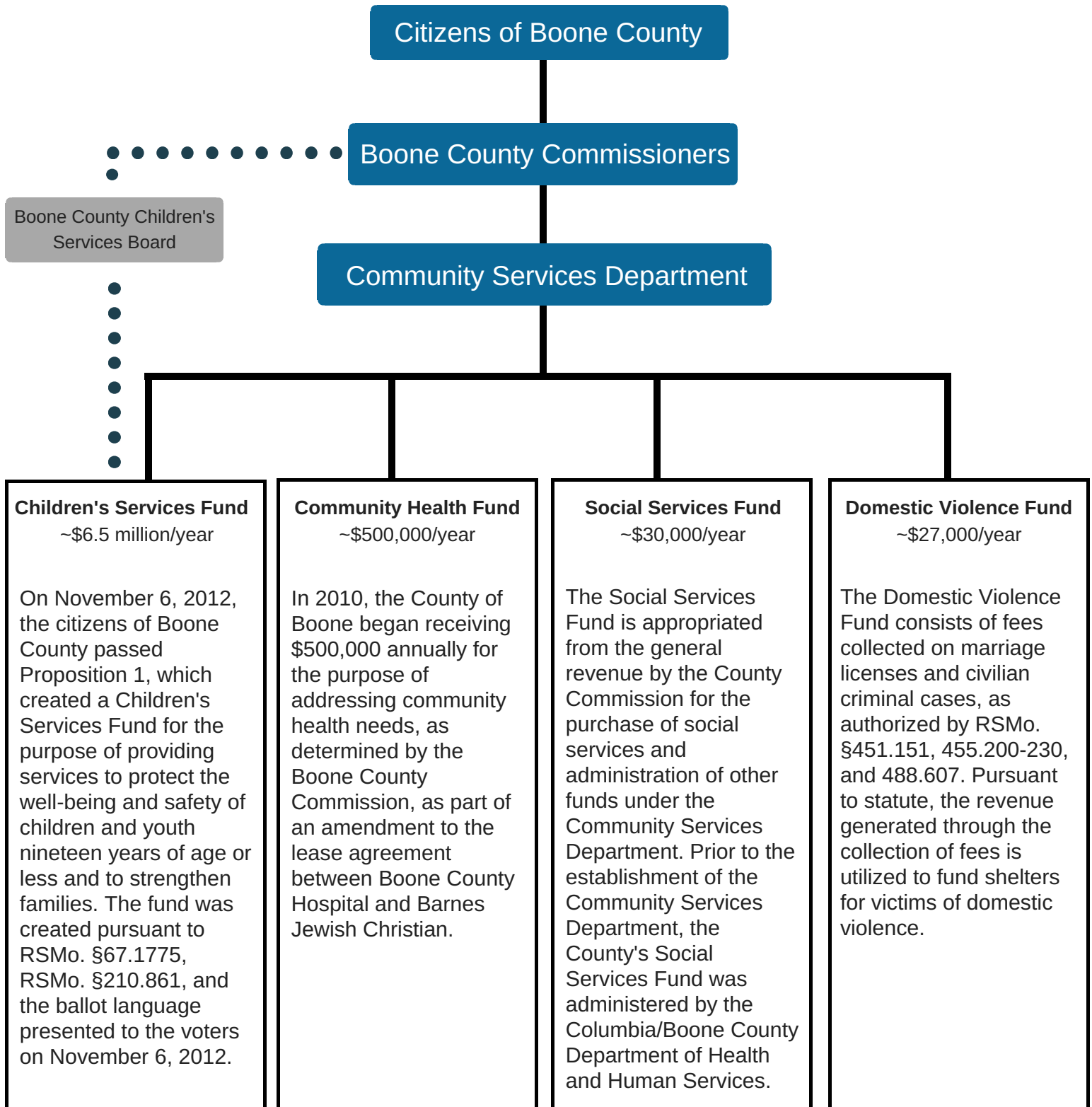
As you will see in the following pages, there are many children, families, and individuals benefiting from the services that are available through the Community Services Department. I want to thank the taxpayers of Boone County who make this possible. Healthy children, families, and individuals contribute to a healthy community. I value the opportunity to serve as the Director of the Community Services Department and am grateful to live in a community that cares about and is responsive to the needs of others.

Sincerely,

Kelly Wallis
Community Services Director
Boone County, MO



Community Services Department Organizational Chart



Boone County Community Services Mission Statement:

To support the greatest possible level of independence and self-sufficiency of Boone County residents by promoting their physical, mental and social well-being to cultivate a safe and healthy community.

Children's Services Fund Overview

On November 6, 2012, the citizens of Boone County passed County of Boone Proposition 1, which created a Children's Services Fund for the purpose of providing services to protect the well-being and safety of children and youth nineteen years of age or less and to strengthen families. The Fund was created pursuant to RSMo. §67.1775, RSMo. §210.861, and the ballot language presented to the voters on November 6, 2012. The Children's Services Fund became effective and the inaugural board was appointed by the County Commission in April of 2013. The board is known as the Boone County Children's Services Board (BCCSB) and is the administrative authority of the Children's Services Fund including establishing the budget and approving appropriations from the fund. The Children's Services Fund generates approximately 6.5 million dollars per year.

Statutorily Eligible Services

RSMo. §210.861 specifies the types of services that may be funded by the BCCSB; pursuant to statute, funds may be invested in the following services:

- up to thirty days of temporary shelter for abused, neglected, runaway, homeless or emotionally disturbed youth
- respite care services
- unmarried parent services
- outpatient chemical dependency and psychiatric treatment programs
- counseling and related services as a part of transitional living programs
- home-based and community-based family intervention programs
- prevention programs which promote healthy lifestyles among children and youth and strengthen families
- crisis intervention services, inclusive of telephone hotlines
- individual, group, or family professional counseling and therapy services
- psychological evaluations
- mental health screenings

Revenues collected and deposited in the Children's Services Fund may not be expended for inpatient medical, psychiatric, and chemical dependency services, or for transportation services.

Children's Services Board Mission Statement:

To improve the lives of children, youth and families in Boone County by strategically investing in the creation and maintenance of integrated systems that deliver effective and quality services for children and families in need.

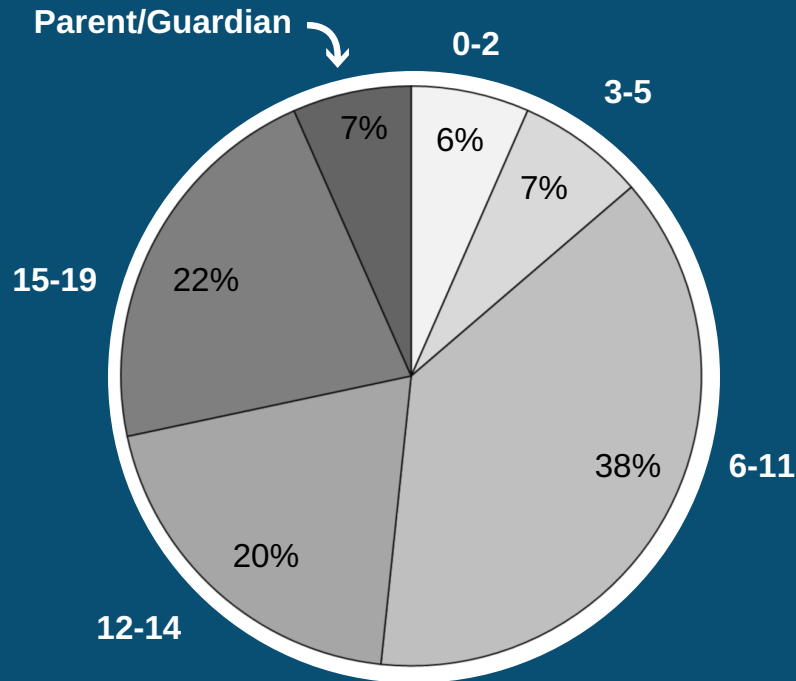
Children's Services Board Vision Statement:

In pursuit of its mission, the Board Members responsible for the Children's Services Fund hold the following core values and have the following vision:

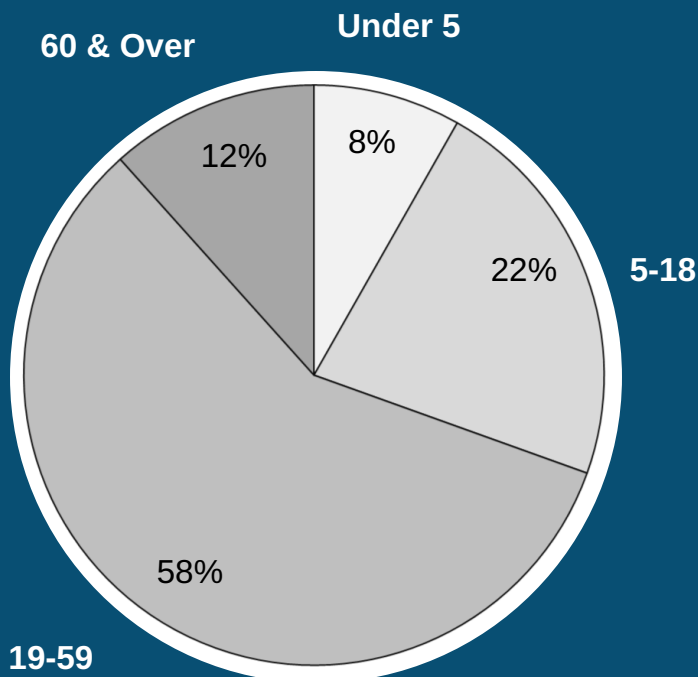
- **Accountability:** The Children's Services Fund will be operated transparently and funds invested wisely to earn and sustain the public's trust.
- **Integrity:** The Children's Services Board Members will act with respect, honesty, and transparency.
- **Discipline:** The Children's Services Fund will be used with purpose and focus on efforts to support creation of integrated systems.
- **Adaptability:** The Children's Services Fund will be used flexibly and will be responsive in order to meet the changing needs of our community.

2016 Overview

Children's Services Fund: Age Demographics



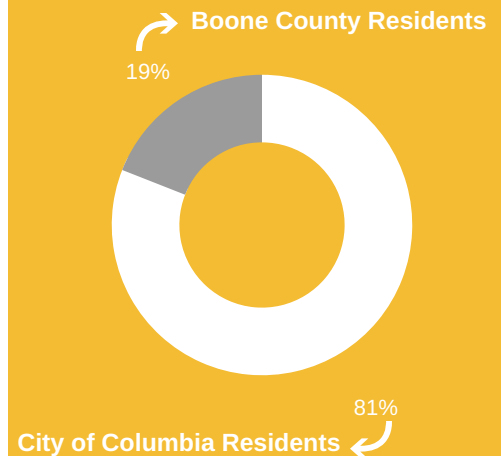
Community Health Fund: Age Demographics



2,094

Providers, Professionals, and
Community Members Trained

Place of Residence:



of Services



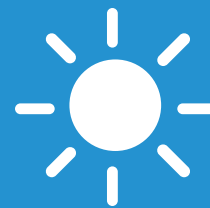
1,213

hours of respite



240

individuals stayed at a temporary shelter



1,293

Children attended before/after school and summer programming



9,589

hours of mentoring



1,890

individuals received counseling/therapy



2,465

individuals received case management/service coordination



28,421

individuals were screened/assessed



6,211

hours of chemical dependency and psychiatric treatment



Children's Services Fund: 2016 Program Outcomes



BOYS & GIRLS CLUBS
OF COLUMBIA

Services Provided:

- Healthy Life Styles Programs (youth 6-18)
- Character and Citizenship Development (youth 6-18)
- Parent engagement and leadership
- Staff development for mental health interventions and wellness training
- Mental Health Resources: On-site Behavior Intervention Team, case management, and counseling

Boys and Girls Club of Columbia Area

Great Futures Start Here

The goal of the program is for youth to be engaged citizens in the community, practice healthy lifestyle choices, and increase readiness for college, trade school, military, and/or employment upon high school graduation.

Impact of Services:



95% of members showed decreased risk factors that may have a negative impact on mental health.



76% of parents increased knowledge of finding resources, support, and coping strategies for effective parenting skills.



234 hours of community service were provided by 107 Boys and Girls Club members.



86% of staff increased knowledge in identifying mental health issues and behavior management skills.

Amount Received: \$250,000

Individuals Served: 577*

**Individuals Served may include clients funded through additional program revenue sources*

Services Provided:

- Clinician-supervised computer-assisted feedback training for children and youth with ADHD

Burrell Behavioral Health, Inc.

Brain Train

The program utilizes clinician-supervised computer-assisted feedback training for Boone County children and youth with ADHD, as well as children for whom traditional medication management alone may not be proving effective in improving attention span. The goal is to improve the child's ability to focus on a task and in return, improve academic performance.

Impact of Services:



91% of youth showed an improvement in focusing on a task while completing the Brain Train program.



70% of students have improved or remained stable in grades/performance.



66% of clients improved in areas of daily living from their first to most recent assessment.

Amount Received: \$117,929.53

Individuals Served: 147

Services Provided:

- Evaluation/Annual assessment
- Therapy
- Psychiatry
- Nursing services
- Psychiatric case management

Burrell Behavioral Health, Inc.

Family Health Program

The Family Health Program's goal is to improve the mental and behavioral functioning to improve daily living skills and academic performance. Services are provided for underserved clients that are 19 or younger who have behavioral health issues and their families.

Impact of Services:



100% of clients were evaluated for daily living functioning.



29 clients received therapy to improve daily functioning and academic performance.



2,948 hours of psychiatric case management was provided.

Amount Received: \$299,146.75

Individuals Served: 94



Services Provided:

- Child and family success plans
- Mental health status assessments
- Social/Educational activities
- Community service referrals
- Community training events for Head Start participants entering kindergarten

Central Missouri Community Action (CMCA)

The Bridge

The Bridge continues Head Start services for children and families entering kindergarten through third grade. Child Success Plans are created to reach age-level social and emotional competence, improve academic performance, strengthen family functioning, and further equip teachers with skills to support children living in poverty.

Impact of Services:



95% of children showed stability in social/emotional competence at their grade level or above by the end of each school year.



88% of families completed an Eco Map to show increases in family support systems and improved resilience.



92% of teachers who attended a summer training showed an increased understanding of the impact poverty and stress have on a child's development and behaviors.

Amount Received: \$204,381.22

Individuals Served: 553



Services Provided:

- Monthly respite program that provides meals, games, physical activities, and crafts for children between the ages of 4-18 in foster care or waiting to be adopted.

The Central Missouri Foster Care and Adoption Association

Monthly Respite Program

The Monthly Respite Program's goals are to decrease family stress and disruption, and increase social skills and relationship building for families of caregivers supporting kids in foster care or waiting to be adopted. Children and youth served will be able to label emotions and feelings non-violently in a healthy environment; families will experience a decrease in stress levels.

Impact of Services:



100% of families reported greater ability to manage stress and anxiety related to parenting.



88% of families increased effectiveness in addressing the emotional needs of children in their care.



816 total hours of respite care were provided in 2016.

Amount Received: \$14,451.64

Individuals Served: 204



Services Provided:

- Family support services
- Parent engagement
- Community-based mentoring
- Mental health support for children 0-18 years of age

CHA Low-Income Services, Inc.

Healthy Home Connections

Families that participate in Healthy Home Connections receive community support services through referrals, mentoring, and mental health support for children 0-18 years of age.

Impact of Services:



97% of participating families retained housing.



97% of children participating in mentoring made improvements based on the matching goals reported by their mentor.



100% of children participating in mentoring reported having a special adult in their lives.



75% of families were referred to mental, psychological, and behavioral health services.

Amount Received: \$265,2853.56

Individuals Served: 903



Services Provided:

- Youth development
- Parent engagement (training/workshops, community-based events, family group activities)
- Site-based mentoring
- Mental health support (clinical assessment, referral, follow up, and staff/parent training)

CHA Low-Income Services, Inc.

Moving Ahead After-School and Summer Program (MAP)

MAP provides education enrichment for children and youth of families who participate in CHA Housing Voucher program.

Impact of Services:



74% of students were identified with needs for additional mental and behavioral health services during the first year.



98% of students referred to mental and/or behavioral health services utilized services at least one time.



92% of children participating in mentoring made improvements based on their matching goals reported by their mentor.



875 hours of site-based mentoring were provided in 2016.

Amount Received: \$156,598.11

Individuals Served: 233



"Communities that Care"

Services Provided:

- Consult and support local stakeholders to organize community-level prevention
- Train local and regional coalition members
- Promote Positive Youth Development through activities designed to increase protective factors in youth.
- Collect and evaluate local data to facilitate planning and measure effectiveness

CHA Low-Income Services, Inc.

Youth Community Coalition, Communities that Care

The goal is to establish, support, and continuously build the capacity of local coalitions to advocate for and deliver services which promote strong families and successful youth in Ashland, Centralia, Columbia, Hallsville, Harrisburg, and Sturgeon.

Impact of Services:



Provided an hour of positive youth development programming to 1,484 youth through school assemblies focusing on healthy choices, avoidance of substance use, and leadership.



196 hours of training were provided to 39 individuals. Training events included: a parent youth training, youth leadership training, and a prevention conference workshop.



100% of Coalition members attended at least 6 meetings.

Amount Received: \$72,483.75

Individuals Served: 1,646*

**Individuals Served may include clients funded through additional program revenue sources*



Services Provided:

- Temporary shelter
- Counseling
- Respite care
- Community outreach
- Wellness groups

Child Abuse and Neglect Emergency Shelter, Inc. dba Rainbow House

Children's Emergency Shelter

The Children's Emergency Shelter provides respite care and emergency shelter services for children and their families. The shelter provides children a safe place in order to prevent or remove them from situations of abuse or neglect. Counseling and wellness groups are provided for children and families to address and prevent abuse and neglect.

Impact of Services:



22 individuals were provided respite care.



1,009 individuals received information on child abuse and neglect prevention and Rainbow House services.



100% of children participating in therapy showed an increase in positive coping skills.

Amount Received: \$8,999.83

Individuals Served: 133*

**Individuals Served may include clients funded through additional program revenue sources*



Child Abuse and Neglect Emergency Shelter, Inc. dba Rainbow House

Homeless Youth Shelter

The Homeless Youth Shelter provides temporary shelter for unaccompanied youth while providing services that address basic needs, case management, and teach life skills. The goal is for youth to establish permanent, stable housing.

Services Provided:

- Temporary shelter
- Case management
- Counseling
- Service coordination
- Life skills training
- Street outreach

Impact of Services:



66% of youth residing in the program safely returned home or transitioned into a safe, stable living environment.



83% of youth demonstrated an increase in life skills knowledge.



20 youth were turned away, typically due to severe mental health concerns, high-level legal issues, and/or high-level substance use. Overall safety of other residents is the primary concern.



100% of youth were connected to an outside agency to address treatment goals.

Amount Received: \$21,961.50

Individuals Served: 15*

**Individuals Served may include clients funded through additional program revenue sources*



Child Abuse and Neglect Emergency Shelter, Inc. dba Rainbow House

Parenting Class Program

The program's goal is to provide support and parenting skills education to at-risk parents/families to diminish child abuse and neglect. Class topics include: self-care, stress and anger management, child development, communication skills, positive discipline, accessing community resources, etc.

Services Provided:

- Provide 'Making Parenting a Pleasure' curriculum to at-risk parents in Boone County.

Impact of Services:



94% of parents who completed the class reported increased knowledge of parenting skills and child development.



94% of parents who completed the class reported increased knowledge of stress and anger management skills.



87% of attendees completed the class.

Amount Received: \$5,654.88

Individuals Served: 100*

**Individuals Served may include clients funded through additional program revenue sources*



Services Provided:

- Weekly TOP meetings
- Service learning projects
- Parent outreach activities
- 1:1 sessions

Columbia/Boone County Department of Public Health and Human Services (DPHHS) *Teen Outreach Program (TOP)*

TOP encourages schools and counselors to recruit students to lead community service activities, discuss current issues, and utilize TOP curriculum that focuses on health education. The purpose is to encourage healthy behaviors and community engagement for youth through Positive Youth Development strategies.

Impact of Services:



91% of students did not fail any courses.



100% of students reported not being pregnant or causing a pregnancy over the past year.



Students completed 1,143 volunteer hours during the 2015-2016 school year.

Amount Received: \$48,270.96

Individuals Served: 248*

**Individuals Served may include clients funded through additional program revenue sources*



Services Provided:

- Evaluation/annual assessments
- Nursing services
- Medication management
- Individual therapy
- Group counseling
- Family therapy
- Group therapy/education
- Community support

Compass Health Inc. **dba Family Counseling Center of Missouri, Inc.** *Boone County Parachute Program*

The Boone County Parachute Program provides counseling, assessment/evaluations, and community support services for adolescents ages 12-16 who are involved in the juvenile justice system or referred by parents. The goal is to reduce and/or eliminate interaction with the juvenile justice system, and improve mental health and academic performance.

Impact of Services:



81% of adolescents showed improvement in functioning, interpersonal skills, and attitudes.



100% of clients receiving psychiatric services received information regarding their diagnosis and if applicable, were prescribed medication.



86% of adolescents ended involvement with the Boone County Juvenile Office at post assessment.

Amount Received: \$76,644.68

Individuals Served: 115



First Chance for Children (FCFC)

Boone County PAT+ Program

Services Provided:

- Home visitation PAT+ Boone County School Partnerships
- Home visitation service, FCFC in-house service
- Infant/Toddler DECA training
- Community support and crisis services
- PAT+ Teen Parent Training
- Online Strengthening Families training from the National Children's Trust Fund
- Trauma training

The goal of FCFC is to provide at-risk families with a home visitation program to build resilience through the development of protective factors. FCFC will help schools develop Parents as Teachers Plus (PAT+) programs that help children enter school ready for success.

Impact of Services:



69% of mothers showed improvement on anxiety/stress levels after 6 months of home visits.



100% of families in crisis received services in the form of diapers, wipes, safety items, food vouchers, etc.



68% of families made progress on family strengthening goals through home visits.



44 professionals received training on the effects of trauma on children and families, and the Devereux Early Childhood Assessment (DECA) program.

Amount Received: \$93,043.60

Individuals Served: 700*

**Individuals Served may include clients funded through additional program revenue sources*



Services Provided:

- Provide programming in order to improve mental health outcomes of youth.
- Provide programming that promotes healthy lifestyle choices among youth.
- Provide programming to help strengthen family units that include youth under the age of 19.

Fun City Youth Academy

Fun City Youth Academy

Fun City Youth Academy promotes healthy lifestyles and improvement in mental health outcomes for low income youth and their families through academic, cultural, and recreational services for the development of social and emotional resilience.

Impact of Services:



86% of students demonstrated an increase in their self-esteem and self-image.



67% of students showed interest in gardening after working on Fun City's garden.



78% of students perceived increased support and improvement in family relationships.



84% of students increased their level of physical activity.

Amount Received: \$76,439.40

Individuals Served: 136*

**Individuals Served may include clients funded through additional program revenue sources*



Services Provided:

- Therapy
- Case management
- Assessment
- Family group facilitation
- Home visitation

Great Circle

Early Assessment and Intervention Services for Outcomes Now (EAI's-ON)

EAI's-ON provides services for Boone County children up to the age of 19 and their families who already have a child or children placed in protective custody within the last 30 days. The goal is to prevent child abuse and neglect, improve parent-child relationships, and reduce out-of-home placement.

Impact of Services:



95% of families did not have a child placed outside the family's home during EAI's-ON service.



58% of parents expressed a decrease in parental stress.



89% of families stated they felt services helped them make better decisions.

Amount Received: \$206,028

Individuals Served: 153

Harrisburg Early Learning Center



"Early Learning for a Brighter Future"

Services Provided:

- Children will receive social emotional screenings, developmental screenings, and social skills testing to measure the Emerging Language and Literacy Curriculum (ELLC) and Positive Behavior Support (PBS)
- School-age children will receive summer enrichment programming
- School-age children will receive before and after school enrichment programming and tutoring

Harrisburg Early Learning Center

School Age and Early Childhood Services

Harrisburg Early Learning Center provides early childhood education to the children of Boone County, preparing children for entry into kindergarten, involving parents in the education of their children, providing quality and structured before and after school programming and summer enrichment programming.

Impact of Services:



100% of children were screened with the Ages and Stages Questionnaire (ASQ-3 and ASQ-SE).



100% of children who received enrichment programming and tutoring maintained or increased knowledge and performance in Math, Science, English, and Reading.



14 children received before and after school enrichment programming and tutoring.

Amount Received: \$20,623.26

Individuals Served: 46



Heart of Missouri CASA

Child Advocacy

Heart of Missouri CASA provides child advocacy services for children involved in abuse and neglect cases. Services are provided by trained volunteers to help find safe, permanent homes for children who have been abused or neglected.

Impact of Services:



100% of closed cases achieved permanency with a CASA volunteer, compared to 88% within the 13th Judicial Circuit of Missouri without CASA.



Children with a CASA volunteer experienced 2.5 moves on average, compared to 4 moves for children in care in the 13th Judicial Circuit of Missouri.



Boone County children received 3,861 hours of advocacy in 2016.

Amount Received: \$108,479.50

Individuals Served: 156*

**Individuals Served may include clients funded through additional program revenue sources*



Lutheran Family and Children's Services of Missouri

Maternal Mental Health

Services Provided:

- Outpatient counseling
- Case coordination
- Medication Management
- Medication prescription

The goal of the program is to increase the number of mothers who receive timely treatment for depression and its effects. Early and effective therapy can mitigate the effects of depression on the parent, the child, and the parent-child relationship.

Impact of Services:



100% of mothers receiving counseling had a reduction in depressive symptoms indicated through pre/post tests.



95% of clients reported feeling better equipped to meet personal and child's needs.



84% of families demonstrated an increase in parent-child attachment and bonding.

Amount Received: \$95,792.82

Individuals Served: 56*

**Individuals Served may include clients funded through additional program revenue sources*



Lutheran Family and Children's Services of Missouri

The Nurturing Network

Services Provided:

- Case management
- Counseling

The goal is to reduce risk factors that lead to child abuse and neglect through case management and direct services including counseling, parenting and life skills curriculum, and financial/material assistance.

Impact of Services:



91% of clients made progress toward addressing risk factors that lead to child abuse and neglect.



12% of clients increased knowledge of child development and parenting between pre- and post-test.



1,271 hours of counseling and 307 hours of case management were provided in 2016.

Amount Received: \$185,578.35

Individuals Served: 118*

**Individuals Served may include clients funded through additional program revenue sources*

Missouri Girls Town

Keeping Kids Safe

Services Proposed:

- Therapeutic mentoring
- Respite
- Temporary shelter

The goal is to create positive and safe outcomes for at-risk youth living in Boone County through therapeutic mentoring, respite and temporary shelter. At-risk youth and parents will be provided the education, guidance and support necessary to transition youth into adulthood.

Proposed services were not provided. Referrals were made to Presbyterian Children's Homes and Services (PCHAS) as a sub-contractor to provide therapeutic mentoring.



Presbyterian Children's
Homes and Services

Services Provided:

- Therapeutic mentoring

Presbyterian Children's Homes and Services

Therapeutic Mentoring improves coping skills and pro-social behaviors to increase self-esteem and create positive connections in the community.

Impact of Services:



100% of enrolled clients have remained in their home with no substantiated reports of abuse or neglect.



323 hours of therapeutic mentoring were provided in 2016.

Amount Received: \$8,082.50

Individuals Served: 28



Nora Stewart Early Learning Center (NSELC)

Nora Stewart

Services Provided:

- Case management services for children and families enrolled in Nora Stewart Early Learning Center

Case management services are offered to help NSELC enrolled children and families with information on community-based health and mental health service, improved family functioning and cohesion, improved school readiness, and improved health outcomes.

Impact of Services:



100% of children attending NSELC have health insurance and are able to go to the doctor or dentist. Parents without insurance received information on reduced cost health resources.



100% of children were screened for developmental delays through MU - Department of Psychiatry's EC-PBS program.



100% of families received information regarding mental health and resources.

Amount Received: \$44,294.40

Individuals Served: 84



Phoenix Health Programs

Services Provided:

- Individual outpatient counseling for mental health and/or substance abuse treatment

Phoenix Programs

Apex

The goals of Apex are to reduce mental health symptoms and substance use, and promote abstinence from alcohol/drugs by increasing positive social activity, positive peer support, and improved relationships with family while increasing psychological stability and decreasing psychological distress.

Impact of Services:



66% of adolescents reported a reduction in mental health and/or substance use issues at a six month follow-up.



88% of adolescents reported having supportive interactions with family or friends at a six month follow-up.



2,917 hours of outpatient counseling for mental health and/or substance use treatment were provided in 2016.

Amount Received: \$67,496.68

Individuals Served: 105*

**Individuals Served may include clients funded through additional program revenue sources*



Phoenix Health Programs

Services Provided:

- Mental health screenings
- Family group therapy
- Counseling

Phoenix Programs

Creating Lasting Family Connections

The program provides family education and mental health screenings to reduce drug and alcohol use and improve family connections for at-risk Boone County children and youth, ages 9-18, with a key risk factor of one or more parents who currently or formerly received substance use treatment/recovery from alcohol and drugs.

Impact of Services:



100% of parents reported increased knowledge about alcohol and other drug use.



90% of youth participants increased skills to refuse alcohol and drugs.



86% of participants demonstrated an increase in the knowledge and use of community services and resources.

Amount Received: \$54,479

Individuals Served: 59



Services Provided:

- Financial match for SNAP and WIC participants to be used at the Columbia Farmer's Market

Sustainable Farms & Communities, Inc.

Access to Healthy Food

The goal of this program is for voucher users to experience lower rates of stress related to food insecurity and changes in health status benefiting one or more families members that can be attributed to their access to fresh, local products from the farmer's market.

Impact of Services:



71% of participants surveyed reported some health benefits that are attributed to access to fresh, local products from the farmers market. Some benefits include: weight loss, reduction in difficulty with allergies, better school performance, and general sense of increased well-being.



The average number of vouchers provided increased by 61% in 2016 compared to 2015.

Amount Received: \$35,453

Individuals Served: 1,018*

**Individuals Served may include clients funded through additional program revenue sources*



Services Provided:

- Provide single point entry to access services
- Evidence-based engagement practices
- Developmentally responsive assessments
- Case management
- On-going progress monitoring
- Strategic prevention and intervention plan
- Evidence-based practice training

University of Missouri - Aaron Thompson PhD, Wendy Reinke PhD, Keith Herman PhD, Kristin Hawley PhD *Family Access Center of Excellence (FACE)*

The goal of FACE is a cross-sector implementation center aimed at providing a coordinated, transparent, and collaborative approach to improving access to quality mental health services for families with children (aged 0-19).

Impact of Services:



The first half of 2016 was spent convening the FACE board, hiring and training staff, renovating physical office space, developing FACE IT infrastructure, developing a community relations campaign, and beginning to accept referrals.



Grand opening was held on August 15, 2016. 305 clients were served in 2016.



78% of clients were self-referred or referred by schools.

Amount Received: \$701,515.73

Individuals Served: 305



Services Provided:

- School staff training
- Intervention materials
- Case management
- Wraparound services for Boone County school-aged children and teachers

University of Missouri - Boone County Schools Mental Health Coalition (BCSMHC) *Training and Case Management*

BCSMHC provides a collaborative initiative through implementation of a scientifically-based prevention and intervention model that reduces risk factors, promotes existing strengths, and improves coordination of services for at-risk youth and their families.

Impact of Services:



63% of staff demonstrated an increase in knowledge of professional development topics such as Understanding and Managing Disruptive Behavior, Executive Functioning, Managing Anxiety and Stress, and Motivational Interviewing after training.



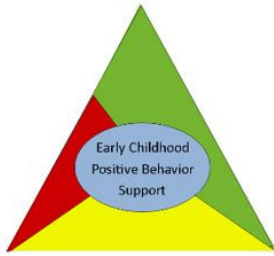
100% of students identified as at-risk received support services from the school or community.



Intervention outcomes will be available following the 2016-2017 school year.

Amount Received: \$620,819.29

Individuals Served: 22,935



Services Provided:

- EC-PBS trainings
- EC-PBS coaching
- EC-PBS coach training and reflective supervision
- Parent engagement

University of Missouri Department of Psychiatry

Early Childhood-Positive Behavior Support (EC-PBS)

The program's goals are to provide coaching, behavioral consultation, and training for early childhood facilities, teachers, and parent/families to increase their abilities to build strong relationships with children and families, promote social-emotional development, reduce problem behaviors, and promote school readiness for children ages 0-6.

Impact of Services:



144 professionals received EC-PBS training and coaching.



84% of trained providers had a post score greater and/or equal to 80% which is considered proficient.



81% of children received a developmental screening from providers.



70% of children showed an increase or stayed the same in appropriate social skills.

Amount Received: \$194,470.05

Individuals Served: 517

BRIDGING The GAP

**MU BRIDGE PROGRAM:
SCHOOL-BASED PSYCHIATRY**

Services Provided:

- Psychiatric services- Attending
- Psychiatric services- C/A Fellow
- Nurse case management
- Administrative services
- Case management support

University of Missouri Department of Psychiatry

MU BRIDGE Program

The MU BRIDGE Program provides school-based psychiatric services and nurse case management for Boone County children and adolescents who are in need of psychiatry services.

Impact of Services:



61% of children experienced significant improvements in mood, behavior, and/or ADHD symptoms.



76% of children referred to MU BRIDGE attended their initial evaluation.



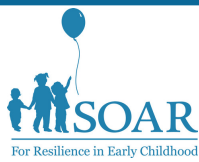
32% of students decreased disruptive behaviors in the classroom, as reported by teachers.



188 students were prescribed medications through MU BRIDGE and 91% followed the medication regimen.

Amount Received: \$411,299.63

Individuals Served: 302



Services Provided:

- Educate and raise awareness of early childhood social/emotional development
- Conduct developmental screenings and provide consultation for children ages 0-6 and their families
- Train providers to do screenings and evidence-based treatment
- Information and referral services (website, message center, and other direct services)
- Child-parent psychotherapy

University of Missouri Department of Psychiatry *System Offering Actions for Resilience (SOAR)*

SOAR's purpose is to build a system to address gaps in existing services for children ages 0-6 years and their families. This includes prevention/promotion activities, screening, information/referral, training and consultation of the workforce, and provision of an evidence-based treatment for young children.

Impact of Services:



22 screening clinics were held, a monthly baby care class was taught, and Family Funfest was offered through a partnership with ParentLink.



2,808 children were screened and 202 were referred for developmental services.



392 providers were trained to conduct Ages and Stages Questionnaire screenings.



Provided information through their website and generated 11,538 views.

Amount Received: \$238,853.79

Individuals Served: 15,741*

**Individuals Served may include clients funded through additional program revenue sources*



Services Provided:

- Well-child visits
- Telephone information line and written material
- Child development checkups
- Parent support groups
- Home visits

University of Missouri Healthcare Division of **Pediatrics** *HealthySteps for Young Children*

HealthySteps for Young Children connects with families during pediatric well visits as part of the primary care team. They also offer screenings, help with complex parenting issues, provide guidance and referrals, care coordination and home visits.

Impact of Services:



97% of families are up to date on vaccinations.



100% of families were screened with the Ages and Stages Questionnaire; 32% of the children screened were referred for early intervention services, which is higher than general clinic population.



89% of families indicated that the care they received at the clinic was "very good" or "excellent".

Amount Received: \$70,656.41

Individuals Served: 65

University of Missouri Psychological Services Clinic

Mental and Behavioral Healthcare

Services Provided:

- Clinic-based, evidence-based therapy
- Multi-Systemic Therapy (MST)
- Dialectical Behavior Therapy (DBT)

The program provides psychiatric case management, psychiatry, therapy, medication management, and physical health support for youth age 19 and younger who have behavioral health issues.

Impact of Services:



51% of youth who completed evidence-based therapy showed an improvement in primary diagnosis.



83% of youth who completed MST showed substantial improvement in problem behaviors.



234 hours of youth DBT group treatment was provided. 100% of youth avoided suicide.

Amount Received: \$229,092

Individuals Served: 125*

**Individuals Served may include clients funded through additional program revenue sources*

University of Missouri Psychological Services Clinic

Psychological Services Clinic

Services Provided:

- Mental health screenings
- EBP training

The Psychological Services Clinic provides mental health screenings for Boone County children ages 2 through 19 and their caregivers. Licensed mental health providers who serve these individuals also receive training in Evidence-Based Practice (EBP).

Impact of Services:



120 mental health screenings were completed with 100% receiving recommendations and referrals.



87% of clients who completed the mental health screening have pursued referral recommendations.



83% of youth who completed a mental health screening have attended a first treatment session.



150 clinicians received evidence-based practice training, equaling 1,295 hours of training.

Amount Received: \$206,028

Individuals Served: 120

**Individuals Served may include clients funded through additional program revenue sources*



Youth Empowerment Zone

The Employment Program

Services Provided:

- Employment Readiness Training
- Career exploration
- Case management
- Employment coaching
- Outreach/Engagement

The goals of the Employment Program are to provide primary avenues for employment preparation through encouraging the continuation of formal secondary and post secondary education, increasing professional development skills, and connecting youth to networks of economic opportunities.

Impact of Services:



117 youth received information on career readiness and opportunities.



YEZ created a new career mentoring program for youth who express interest in a particular career.



Youth attended mock interviews with YEZ board members.

Amount Received: \$41,974.55

Individuals Served: 323*

**Individuals Served may include clients funded through additional program revenue sources*

Community Health Fund: 2016 Program Outcomes



Services Provided:

- Live Well health promotion intervention
- Service coordination
- Behavioral Health Awareness campaign on suicide prevention and substance use

Columbia/Boone County Department of Public Health and Human Services *Live Well Boone County*

The program goals include: empower all residents to eat a healthy diet and be physically active; improve our community's ability to access and utilize comprehensive health services; and prevent suicide, underage drinking, misuse of prescription drugs, and use of illegal drugs.

Impact of Services:



10 community organizations received exercise equipment or made changes to promote a healthy environment.



50% of participants of a health education program experienced weight loss.



The Behavioral Health Awareness campaign will begin in 2017.

Amount Received: \$66,738.22

Individuals Served: 646



Family Health Center
Health and Care. Within Reach.

Services Provided:

- Limited oral exam
- Intra-oral periapical X-ray
- Non-surgical extraction/basic dental service
- Emergency room referral of dental patients to Family Dental Center

Family Health Center of Boone County

Boone County Emergency Dental Referral Program

The program aims to refer identified consumers directly to an appropriate dental care environment to address the consumer's acute dental needs, offer an ongoing source of preventive dental care, realize cost savings, and prevent subsequent avoidable ER visits.

Impact of Services:



96% of patients had their dental pain alleviated as a result of their non-surgical extraction/basic dental service.



90% of patients had their dental pathology stabilized as a result of their non-surgical extraction/basic dental service.



100% of patients received oral health education regarding routine preventive oral health practices.

Amount Received: \$99,504

Individuals Served: 937*

**Individuals Served may include clients funded through additional program revenue sources*



Services Provided:

- Distribution of emergency grocery items

The Food Bank for Central and Northeast Missouri, Inc.

Central Pantry

The Food Bank for Central and Northeast Missouri, Inc. provides food and groceries to those in need in Boone County.

Impact of Services:



There was a 6% decrease of clients responding "Often True" to the question, "In the last 3 months, the food we bought often didn't last and we didn't have the money to get more".



The Central Pantry increased the percentage of nutritious foods distributed by 3% from the previous year.



The Central Pantry distributed a total of 4,957,795 pounds of food in 2016.

Amount Received: \$50,000

Individuals Served: 21,556*

**Individuals Served may include clients funded through additional program revenue sources*

Services Provided:

- Home maintenance (lawn mowing, leaf raking, snow shoveling, and one time projects)
- Case management
- Carrier Alert
- Property tax credit preparation filing
- Food pantry delivery and grocery shopping
- Friendly visiting

Independent Living Center of Mid-Missouri, Inc. dba Services for Independent Living *Senior Connect*

Services for Independent Living's (SIL) goals are to help low-income seniors live independently, make homes safer, and alleviate isolation/depression while improving overall quality of life and health.

Impact of Services:



85% of seniors report that social support services impact their ability to live independently in their own home and community.



86% of seniors report improved quality of life.



Receiving SIL's services increased seniors' ability to remain safe and independent in their home.



87% reported a reduction in anxiety while receiving services.

Amount Received: \$41,895

Individuals Served: 316*

**Individuals Served may include clients funded through additional program revenue sources*



Services Provided:

- Provide high quality nutritional food with whole grains, fresh fruits, and vegetables
- Two planned parent inclusion movement events and nutritious meals with the children

Mary Lee Johnston Community Learning Center *Lifestyle Habits*

The program provides education and development of lifestyle habits that reflect the importance of quality food selection and positive activity choices.

Impact of Services:



100% of meals served meet the high nutritional standards of the *Advanced Level Eat Smart Food Program*.



Two events were held for families to spend time exercising and to enjoy a nutritious meal together.



100% of children broadened their "like" of nutritious foods.

Amount Received: \$7,748.83

Individuals Served: 124*

**Individuals Served may include clients funded through additional program revenue sources*



Phoenix Health Programs

Services Provided:

- Outpatient substance abuse counseling

Phoenix Programs, Inc.

Substance Abuse Treatment

The goals of the program are to improve the health and quality of life of Boone County residents impacted by alcohol and other drug use disorders through improved access to treatment and community collaboration. Another goal is to reduce criminal activity as a result of drugs/alcohol.

Impact of Services:



62% of participants reported using illicit drugs in the prior 30 days at intake but decreased to 9% at the six month follow-up.



At intake, 49% of participants reported using alcohol but decreased to 16% at the six month follow-up.



At intake, 18% of participants reported misusing prescription drugs but decreased to 3% at the six month follow-up.



At intake, 27% of participants were utilizing self help or recovery groups but increased to 61% at the six month follow-up.

Amount Received: \$63,707.20

Individuals Served: 1,217 *

**Individuals Served may include clients funded through additional program revenue sources*



Services Provided:

- Dental treatment
- Eye glasses replacement

Public Administrator of Boone County

Public Administrator's Dental and Eye Care of Adults

The program provides dental and eye care to clients of the Boone County Public Administrator.

Impact of Services:



Dental services were provided to those who did not have coverage from other sources.



Medicaid now covers dental services which reduced the number of clients seeking assistance from the Public Administrator of Boone County.



No requests were made in 2016 for eyeglasses.

Amount Received: \$7,242.15

Individuals Served: 11



DOING THE MOST GOOD®

Services Provided:

- Emergency shelter with meals

The Salvation Army

Salvation Army Harbor House

The goals of the program are to improve the well-being, personal safety, and the physical, mental, and emotional health of homeless adults and families of all ages. The adults work to resolve the issues which led them into homelessness with the ultimate goal of securing permanent housing.

Impact of Services:



233 individuals were housed safely at least one night.



14,250 bed nights were provided.



100% of individuals were served a meal for each night.

Amount Received: \$50,000

Individuals Served: 233*

**Individuals Served may include clients funded through additional program revenue sources*



Adult Day Connection
University of Missouri Health

Services Provided:

- Adult Day Health Care (Respite) which includes meals, nursing visits, exercise, and activities
- Transportation to and from the center from the participants' home (within 15 miles)

University of Missouri (on behalf of the Adult Day Connection)

Adult Day Scholarship Program for Individuals Living in Boone County

Boone County individuals with limited income who attend Adult Day Connection can remain at home longer and demonstrate higher life satisfaction. Caregivers of the participants also report less stress and higher life satisfaction.

Impact of Services:



83% of caregivers reported their loved one increased or maintained well-being after attending ADC.

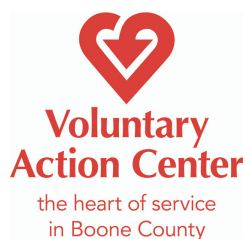


88% of caregivers reported decreased stress related to care giving.

Amount Received: \$10,343.48

Individuals Served: 60*

**Individuals Served may include clients funded through additional program revenue sources*



Voluntary Action Center

Basic Needs and Emergency Services

The program provides services that specifically address and meet needs for assistance with health, employment, housing, and safety for low-income Boone County residents.

Services Provided:

- Co-pay assistance for prescriptions, medical visits, eyeglass services, and other medical needs
- Rent assistance for homelessness prevention or rapid rehousing
- Uniforms or other clothing for work
- Screening for provision of infant car seats

Impact of Services:



200 child car seats were distributed to keep children safe in a vehicle.



182 work uniforms were provided to individuals to obtain/retain employment.



28 co-pays were provided for eyeglasses.



34 households received rental assistance to maintain housing.

Amount Received: \$33,970

Individuals Served: 1,383

Community Health Strategic Opportunity Fund

The Community Health Strategic Opportunity Fund is available to improve expertise, pilot innovative programs or as match funds to secure funding from other payer sources. Funds are available for any new or different method, situation, or opportunity that could not have been anticipated, is consistent with, and addresses community health needs, as determined by the Boone County Commission. In 2016, three programs were funded through the Strategic Opportunity Fund:

• **Sequential Intercept Mapping Workshop**

Provided a framework for the interface between the criminal justice and mental health systems. The mapping exercise examined each of the intercepts in Boone County. A map of the current criminal justice-mental health interface was created that identified strengths and gaps at each intercept.

• **Central Missouri Community Action Transportation Pilot Project**

Utilizing CMCA's Mobility Management Coordinator, funds are provided for the most reasonable, cost-effective transportation to access services when no other means of transportation are available.

• **Job Point Vocational Skills Training**

Funds are provided for individuals referred from the Boone County Alternative Sentencing Courts to receive vocational skills training.

Community and Social Services Fund

The Community and Social Services Funds are appropriated from the general revenue by the County Commission for the purchase of social services. Prior to the establishment of the Community Services Department, the County's Community and Social Services Fund was administered by the Columbia/Boone County Department of Health and Human Services pursuant to an intergovernmental agreement. The Community Services Department is now responsible for the administration of the fund. The County Commission is honoring all contracts executed under the administration of the Columbia/Boone County Department of Health and Human Services provided the organizations meet their contractual obligations. As current contracts expire, organizations will be expected to apply for future funding opportunities through the Children's Services Fund or the Community Health/Medical Fund. An overview of the allocation of funds for 2016 follows:

Organization	Program Name	Allocation	Contract Period
Community Garden Coalition	Community Gardening	\$1,900	2014-2016
Food Bank for Central and Northeast MO	Central Pantry	\$16,388	2014-2016
Salvation Army	Harbor House Emergency Shelter	\$8,360	2014-2016
Voluntary Action Center	Meeting Basic Needs	\$2,850	2014-2016

Domestic Violence Fund

The Domestic Violence Fund consists of fees collected on marriage licenses and civil and criminal cases, as authorized by RSMo. §§451.151, 455.200-230, and 488.607. Pursuant to statute, the revenue generated through the collection of fees is utilized to fund shelters for victims of domestic violence. On September 1, 2016 the County issued a Notice of Funding Availability for organizations to apply to receive funds to shelter victims of domestic violence. Proposals were due on September 30, 2016. One organization submitted a proposal and met the statutory requirements to receive funds. True North was awarded a contract to provide shelter services for victims of domestic violence for calendar year 2017 in the amount of \$27,695.22.



Boone County Community Services (BCCS) Funded Organization Directory

Organization	Services Provided	Contact Information
Boys and Girls Club of Columbia Area	Provides after-school and summer programming that promotes healthy lifestyles for youth ages 6-18.	<u>Website:</u> www.bgc-columbia.org <u>Phone:</u> (573) 874-1697
Burrell Behavioral Health, Inc.	Provides behavioral health services through psychiatric case management, therapy, etc.	<u>Website:</u> www.burrellcenter.com <u>Phone:</u> (573) 777-8300
Central Missouri Community Action	Provides a variety of services to help individuals and families become and/or remain independent.	<u>Website:</u> www.showmeaction.org <u>Phone:</u> (573) 777-5233
Central Missouri Foster Care and Adoption Association (CMFCAA)	Provides monthly respite care, training, advocacy, and supports for foster and adoptive, children, youth, and families.	<u>Website:</u> www.ccfosteradopt.com <u>Phone:</u> (573) 298-0258
CHA Low-Income Services, Inc.	Provides programs and services to public housing residents and other low to moderate income persons focused on youth succeeding, adult self-sufficiency, independent living and affordable housing.	<u>Website:</u> www.columbiaha.com <u>Phone:</u> (573) 443-2556
Child Abuse and Neglect Emergency Shelter, Inc. dba Rainbow House	Keeps children safe and supports families in crisis through prevention, assessment, and intervention of child abuse and neglect. Provides emergency shelter services for children and homeless youth and leads a parenting course.	<u>Website:</u> www.rainbowhousecolumbia.org/ <u>Phone:</u> (573) 474-6600
Columbia/Boone County Department of Public Health and Human Services	Provides health promotion and education, addresses the causes and effects of poverty, provides WIC and community nutrition, and other services.	<u>Website:</u> www.como.gov <u>Phone:</u> (573) 874-7355
Community Garden Coalition of Columbia & Boone County, Missouri	Provides support, supplies, and garden plots to community gardeners, especially for lower-income individuals, elderly, people with disabilities, children, and those not able to have their own garden.	<u>Website:</u> www.comogardens.org <u>Phone:</u> (573) 875-5995

BCCS Funded Organization Directory

Compass Health Inc. dba Family Counseling Center of Missouri, Inc.	Provides mental health and substance use disorder treatment.	<u>Website:</u> www.compasshealthhome.org/pathways-community-health <u>Phone:</u> (573) 449-2581
Family Health Center of Boone County	Provides access to primary medical, dental, and mental health services for community members, with emphasis on the medically underserved.	<u>Website:</u> www.fhcmo.org <u>Phone:</u> (573) 214-2314
First Chance for Children	Provides home visits, community support, crisis services, and training for child care providers.	<u>Website:</u> www.firstchanceforchildren.org <u>Phone:</u> (573) 777-1815
The Food Bank for Central and Northeast Missouri, Inc.	Provides food and groceries to those in need.	<u>Website:</u> www.sharefoodbringhope.org <u>Phone:</u> (573) 474-1020
Fun City Youth Academy	Provides youth programming that promotes healthy lifestyle choices, strengthens family units, and improves mental health.	<u>Website:</u> http://funcityyouthacademy.org/ <u>Phone:</u> (573) 256-1436
Great Circle	Provides therapy, education, transitional services, and case management for children/families with mental and behavioral issues.	<u>Website:</u> www.greatcircle.org/index.php/impact/central-region <u>Phone:</u> (573) 874-8686
Harrisburg Early Learning Center	Prepares children for kindergarten, completes developmental screenings, and involves parents in the education for their children.	<u>Website:</u> www.harrisburgearlylearningcenter.com <u>Phone:</u> (573) 875-5959
Heart of Missouri CASA	Provides child advocacy services for Boone County children involved in Boone County Circuit Court abuse and neglect cases.	<u>Website:</u> www.heartofmissouricasa.com <u>Phone:</u> (573) 442-4670
Independent Living Center of Mid-Missouri, Inc. (SIL)	SIL helps low-income older adults live independently, make their home safer, and alleviate isolation and depression.	<u>Website:</u> www.silcolumbia.org <u>Phone:</u> (573) 874-1646
Lutheran Family and Children's Services of Missouri	Provides counseling, parenting education, adoption and pregnancy services, and maternal mental health services.	<u>Website:</u> www.lfcsmo.org/locations/mid-missouri-office/ <u>Phone:</u> (573) 815-9955

BCCS Funded Organization Directory

Mary Lee Johnston Community Learning Center	Provides child care and education programs while teaching healthy lifestyle choices.	<u>Website:</u> www.mljclc.org <u>Phone:</u> (573) 449-5600
Nora Stewart Early Learning Center	Provides child care while offering case management services to improve family functioning and health.	<u>Website:</u> www.norastewart.com <u>Phone:</u> (573) 449-5981
Phoenix Programs	Provides mental and behavioral health services, substance use disorder treatment, and improves family connections.	<u>Website:</u> www.phoenixhealthprograms.com <u>Phone:</u> (573) 875-8880
Presbyterian Children's Homes and Services	Provides transitional living and therapeutic mentoring services.	<u>Website:</u> http://missouri.pchas.org/ <u>Phone:</u> (573) 442-9916
Public Administrator of Boone County	Provides dental and eye care to clients of the Boone County Public Administrator.	<u>Website:</u> www.showmeboone.com/publicadmin/ <u>Phone:</u> (573) 886-4190
The Salvation Army	Provides shelter for homeless women, men, and families with children while they find permanent housing. Additional services include a thrift store, emergency disaster services, and food and nutrition programs.	<u>Website:</u> www.usc.salvationarmy.org/usc/www_usc_columbia.nsf/vw-text-index/9f376d9eba0440d88625757800678cc2?opendocument <u>Phone:</u> (573) 442-3229
Sustainable Farms & Communities, Inc.	Provides funds to match SNAP and WIC benefits at the Columbia Farmer's Market for Boone County families with children 19 years of age or younger.	<u>Website:</u> www.sfandc.org
True North	Provides victims of domestic and sexual violence with safe housing, advocacy, and support.	<u>Website:</u> www.truenorthofcolumbia.org <u>Phone:</u> (573) 875-0503 <u>HOTLINE:</u> (573) 875-1370
University of Missouri (on behalf of Aaron Thompson, PhD, Wendy Reinke, PhD, Keith Herman, PhD, and Kristin Hawley, PhD)	Family Access Center of Excellence (FACE) provides a single point of entry to access services, screenings, and case management.	<u>Website:</u> www.faceofboonecounty.org <u>Phone:</u> (573) 771-3223

BCCS Funded Organization Directory

University of Missouri (on behalf of the Adult Day Connection)	Provides adult day programming which includes meals, nursing visits, exercise, and activities.	<u>Website:</u> www.adcshp.missouri.edu/ <u>Phone:</u> (573) 882-7070
University of Missouri (on behalf of Boone County Schools Mental Health Coalition)	Provides training for school staff, case management, and wraparound services for Boone County school-aged children and teachers.	<u>Website:</u> www.bcschoolsmh.org <u>Phone:</u> (573) 489-0719
University of Missouri (on behalf of the Department of Psychiatry)	Provides general psychiatric services along with clinical/school-based psychiatry, training/coaching, parent training, social/emotional screenings, and prevention activities.	<u>Website:</u> www.medicine.missouri.edu/psychiatry/ <u>Phone:</u> (573) 884-1236
University of Missouri (on behalf of the Division of Pediatrics)	Provides child physical and mental development checkups, screenings, and referrals for parents with children identified as high-risk for developmental and behavioral health problems.	<u>Website:</u> www.medicine.missouri.edu/childhealth/pediatric-clinic.html <u>Phone:</u> (573) 882-4730
University of Missouri (on behalf of the Psychological Services Clinic)	Provides mental and behavioral health services for Boone County children and their families. Also provides evidence-based practice training.	<u>Website:</u> https://psychology.missouri.edu/psychological-services-clinic <u>Phone:</u> (573) 882-4677
Voluntary Action Center	Provides assistance that addresses and meets needs for health, employment, housing, and safety for low-income Boone County residents.	<u>Website:</u> www.vacmo.org <u>Phone:</u> (573) 874-2273
Youth Empowerment Zone	Provides employment preparation, professional development, and connects youth to networks of economic opportunities.	<u>Website:</u> www.yezweb.org <u>Phone:</u> (573) 256-1896

BCCS Collaboration Efforts

Boone Impact Group (BIG)

The Boone Impact Group (BIG) consists of the Boone County Community Services Department, Columbia/Boone County Department of Health and Human Services, City of Columbia Community Development, and Heart of Missouri United Way. BIG's mission is to maximize the impact of these local funding sources to generate positive change for individuals living in Boone County. BIG meets to discuss strategic opportunities, community needs and efforts, and overlap of program funding. Additional projects have included organizing the Homelessness Summit and continuing the strategies to end homelessness identified by community members. BIG is also creating a taxonomy of services to clearly define services provided by programs. Also, a data dashboard is being developed to provide a single location to find reliable data regarding populations and issues in Boone County.

Homelessness Summit

The Homelessness Summit was a two-day event that provided nationwide speakers and a community action planning session. BCCS organized and participated in the planning committee and provided funding to support this event. The community action planning session was structured on the populations identified in the U.S. Interagency Council on Homelessness Goal Framework: Veterans, Chronically Homeless, Families, and Unaccompanied Youth. The planning session resulted in three main strategies and action steps to reduce homelessness. The first is to increase access to affordable housing by engaging land lords and increasing the number of affordable housing units. The second step is to transition Boone County to a housing-first model by developing resources for strategic planning and move resources towards implementation. The third is to coordinate across systems through conducting a community-based systems mapping to increase knowledge about system gaps and areas for action planning, strengthen a local Continuum of Care Task Force, and develop a coordinated entry system. Since the Homelessness Summit, the Boone County Children's Services Fund released a Request for Proposal for programs to address youth homelessness. Additional local efforts identified through the community action planning are continuing and making progress.

Boone Indicators Dashboard (BID)

The Boone Indicators Dashboard (BID) is a collaboration effort between BIG, data experts, and the University of Missouri Office of Social and Economic Data Analysis (OSED). OSED has been contracted to collect the most reliable data sources regarding populations and issues of Boone County residents. The data will be hosted on a website to accurately inform researchers, organizations, and stakeholders, and will be available to the public.

Community Services Department Staff:

Kelly Wallis, Director
Joanne Nelson, Program Manager
Kristin Cummins, Program Specialist
Lauren Schnitzler, Administrative Assistant

Boone County Children's Services Board Members:

Les Wagner, Chair
Gregory Grupe, Vice Chair
Nancy McKerrow, Treasurer
Michele Kennett
Kathy Thornburg
Dewey Riehn
Harry Williams
Leigh Spence
Joel Ray

Community Health Advisory Council:

Commissioner Janet Thompson
Stephanie Browning
Barbara Weaver
Matt Harline
Linda Cooperstock

Community Services Department:

605 E. Walnut, Ste. A
Columbia, MO 65201
(573)886-4298

www.showmeboone.com/communityservices

