



2021-2022

ELECTION REPORT

Boone County Clerk's Office



TABLE OF CONTENTS

Boone County Elections.....	2
Voter Registration and Voter Rolls.....	3
April 2021 General Municipal Election.....	4
November 2021 Special Election.....	6
November 2021 Risk-Limiting Audit Pilot.....	7
April 2022 General Municipal Election.....	13
2022 Redistricting.....	15
August 2022 Primary Election.....	19
2022 Changes to Election Law.....	20
November 2022 General Election.....	24
What's in store for 2024.....	28

A BRIEF OVERVIEW OF ELECTIONS IN BOONE COUNTY

- Elections are held in April, August, and November of every even-numbered year. In odd-numbered years, August and November election dates are placeholders for special elections that might be called by counties, cities, school districts, or other districts.

Election Date	Election Type	What's on the Ballot
April (every year)	Municipal (Local)	School boards, city councils, fire districts, and other local offices and questions.
August (even years)	Primary	You vote one political party ballot to choose which candidate for each party appears on November's ballot.
November (even years)	General	Presidential candidates are on the ballot every 4 years. Statewide offices, state representatives and senators, county offices & state or local questions.

VOTER REGISTRATION AND BOONE COUNTY'S VOTER ROLL

Registering to vote is the first step towards making your voice heard in Boone County elections. To register, you must be:

- At least 17.5 years old;
- a U.S. Citizen; and
- a Boone County Resident.

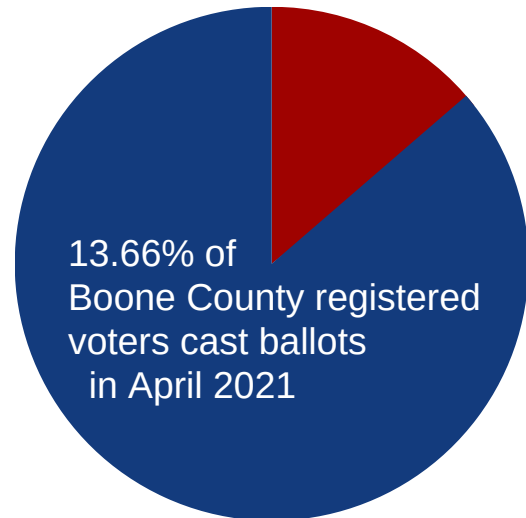
Eligible voters with a felony conviction can also register to vote once they have completed their sentence, including any probation and/or parole.

New Missouri residents must register by the 4th Wednesday before Election Day in order to participate in that election. Once you're a registered voter, though, you can update your name or address any time, including on Election Day. Voters can register online at vote.boonemo.org or come to the Boone County Clerk's Office at the corner of 9th & Ash in downtown Columbia.

The voter registration roll is maintained by the Boone County Clerk's Office on a daily ongoing basis. When a voter registers or updates their registration, the Clerk's Office mails out voter ID cards, sample ballots, and other election mail to inform them about upcoming elections. This process also helps keep the voter roll clean and up-to-date. If a voter's election mail is returned by the post office, the Clerk's Office sends a residence confirmation notice to the voter to encourage them to update their voter registration. The office also uses reports from the Secretary of State's Office to check for voters that may have moved out of state, become ineligible to vote, or passed away.

APRIL 2021 GENERAL MUNICIPAL ELECTION: Ballot Content

- STATE OF MISSOURI:
 - State Representative District 45 Special
- BOARD OF EDUCATION:
 - Columbia Public School
 - Southern Boone County R-1 (and bond issue)
 - Hallsville R-4
 - New Franklin R-1
- MUNICIPAL OFFICES:
 - Columbia, Councilperson Wards Two and Six
 - Ashland, Alderman Wards One, Two, and Three
 - Centralia, Mayor, City Collector, and Alderman Wards One, Two, and Three
 - Hallsville, Alderman Wards One and Two
 - Rocheport, Mayor, Alderman Wards One and Two



BY THE NUMBERS

Registered Voters: 122,960

Total Votes Cast: 16,792

Absentee Ballots: 1,264

Polling Places; 42

Election Judges: 211



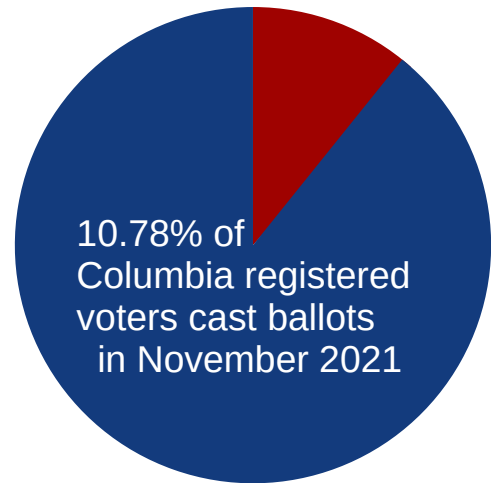
APRIL 2021 GENERAL MUNICIPAL ELECTION: Ballot Content Cont.

- MUNICIPAL OFFICES:
 - Surgeon, Alderman
 - Board of Trustees: McBaine, Pierpont, Hartsburg
- MUNICIPAL ISSUES:
 - Centralia Use Tax
 - Centralia, Mayor's term
- FIRE DISTRICTS:
 - Boone County Fire Protection District (bond issue)
 - Southern Boone County Fire Protection District (board of directors)



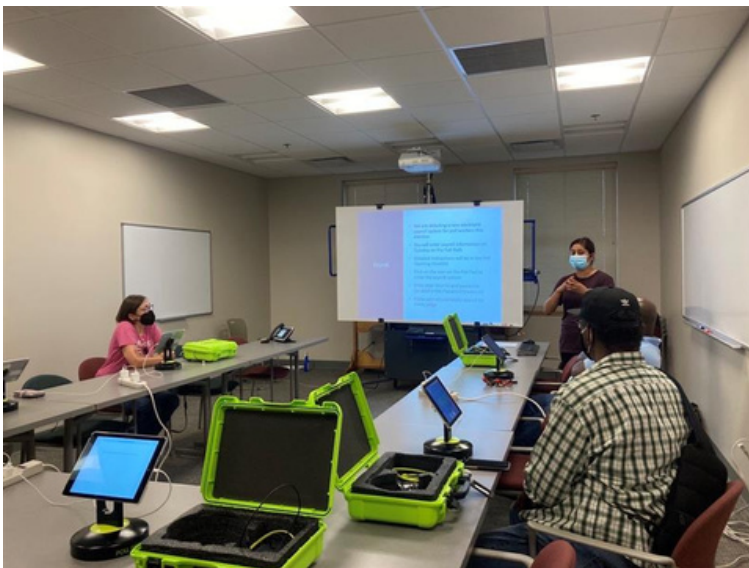
NOVEMBER 2021 SPECIAL ELECTION: Ballot Content

Shall the municipality of Columbia, Missouri impose a sales tax of one-eighth of one percent, for a period of ten (10) years, for the purpose of providing funding for local parks for the municipality?



BY THE NUMBERS

Registered Voters: 83,171
Total Votes Cast: 8,966
Absentee Ballots: 700
Polling Places: 32
Election Judges: 149



NOVEMBER 2021 SPECIAL ELECTION: Risk Limiting Audit Pilot

On November 8, 2021 the Boone County Clerk's Office conducted a pilot Risk-Limiting Audit of the November 2, 2021 special election at the University of Missouri. Risk-limiting audits are a type of post-election audit that provides statistical evidence that the outcome of the election is correct. The goal is to provide transparency and confidence in the election process and educate voters about the safeguards in place to ensure accurate and trustworthy elections.

The risk-limiting audit utilized independent statistical software to determine a random sample of voted ballots from the election to be hand-checked. Three 2-person bipartisan teams checked the votes on the ballots and recorded the results in the software. The audit is complete when the results provide sufficiently strong evidence that a full hand-count would confirm the outcome of the unofficial results from Election Day.

This pilot was conducted in addition to the post-election audit that occurs during the election certification process, which is required by Missouri law. That audit compares the votes tabulated in 5% of precincts against the paper ballot to check the accuracy of the results



Boone County Clerk's Office Risk-Limiting Audit Report
November 2, 2021 Special Election
Brianna L. Lennon
Boone County Clerk

Purpose and Scope

As the 2022 election cycle approaches, our office is acutely aware of the national conversation about public confidence and trust in our democracy. It is our mission to help educate voters about safeguards already in place in Boone County that ensure accurate and secure elections. However, it is also important to provide voters with the opportunity to learn about other successful methods for checking election results, including risk-limiting audits, which are used in fifteen other states.¹ In furtherance of that goal, the Boone County Clerk's Office chose to pilot a risk-limiting audit of the November 2, 2021 Special Election for the city of Columbia. This pilot served as a supplemental process to the post-election audit that is required by Missouri law.

In Missouri, post-election audits are already an integral part of elections.² For every election in Missouri, election night results are unofficial until a bipartisan team of election judges conducts a hand recount of all ballots cast from a randomly selected 5% of the county's precincts. This is an open and transparent process that the public is welcome to observe at our office after the election. The election judges compare the hand recount of the paper ballots against the election night results tabulated by the voting equipment to check the accuracy of the results and the integrity of the voting equipment. The bipartisan nature of the audit and the additional verification helps provide confidence and trust in Missouri's electoral system. The goal of this audit is an exact match of the hand recount to the tabulated results.

A risk-limiting audit, on the other hand, is a type of post-election audit that provides statistical evidence that the outcome of the election is correct.³ The risk-limiting audit uses independent statistical software to select a random sample of voted ballots from the election to be hand-counted. Bipartisan teams check the votes on the ballots and record the results in the software. The audit is complete when the results provide sufficiently strong evidence that a full hand count would confirm the outcome of the unofficial election night results. The goal of this audit is statistical confidence that the electoral outcome reported on election night was correct.

¹ "Risk-Limiting Audits," *National Conference of State Legislatures*, September 16, 2021 at <https://www.ncsl.org/research/elections-and-campaigns/risk-limiting-audits.aspx>.

² 15 CSR 30-10.110, Rules of Elected Officials – Secretary of State – Voting Machines, "Manual Recount," at <https://www.sos.mo.gov/cmsimages/adrules/csr/current/15csr/15c30-10.pdf>.

³ For more information about the mathematics of risk-limiting audits, see Lindeman, Mark and Philip B. Stark, A Gentle Introduction to Risk-limiting Audits, *IEEE Security and Privacy, Special Issue on Electronic Voting*, March 16, 2012 at <https://www.stat.berkeley.edu/~stark/Preprints/gentle12.pdf>.

The size of the random sample of ballots is determined by the margin of victory (how close the race was). The wider the margin, the lower the number of ballots that need to be checked. Since the margin of victory for the November 2, 2021 election was so wide (7,203 ‘yes’ votes to 1,761 ‘no’ votes), the sample size required to have a confidence level of 95% that the results of the election were correct was 38 ballots.

Audit Process

With transparency and education in mind, we wanted the public to be able to view, participate in, and ask questions of the process. The office invited the chairs of the Democratic and Republican central committees to provide names of those who would be interested in serving on the bipartisan audit teams. We also worked with the Associated Students of the University of Missouri and Missouri Students Association at the University of Missouri to host the audit at a central location on the University of Missouri campus to provide greater space and access.

To prepare for the audit, our office reviewed all chain-of-custody procedures and safeguards in the months leading up to the election. For every election in Boone County, election judges utilize a series of checklists and forms to document voting equipment and supplies, including ballots. As part of the election night poll closing process, the bipartisan team of election judge supervisors seal the voted ballots in a bag with a tamper-evident zip-tie seal at the polling place and deliver them, together in one vehicle, to the Government Center. The ballot bags are then checked in with office staff, organized by polling place, and stored in the County Clerk’s Office secure vault until the post-certification process begins. A certificate of ballots, which includes details about the number of used and unused ballots, accompanies the ballots. These certificates became the foundation of our ballot manifest (Appendix A), which documented the number of ballots contained in each of the sealed ballot bags. This is our standard method of ballot storage and chain-of-custody in Boone County, so no changes to the ballot organization process were needed to prepare for the risk-limiting audit.

The audit was conducted the week following the election on Monday, November 8, 2021. On that morning, the ballots were transported in the sealed bags from the Boone County Clerk’s Office vault to the University of Missouri campus by our staff in our office vehicle. We used a chain-of-custody log to document every movement of the ballots, from our office to the campus and back to our office at the conclusion of the audit. Doors opened at 10:00 am and we first conducted a brief training and presentation at 10:30 am to provide background and context for the audit (Appendix B). The entire process concluded just before 2:00 pm.

Following the training and presentation, the audit began. The ballot manifest, which listed the number of ballots in each sealed ballot bag (“the batch”), was uploaded into the independent audit software and we then needed to create a random number seed so that the software could identify 38 ballots in the batches to review. The audience was invited to roll ten-sided dice to create a random number seed, which was typed into the software to generate a list of 38 ballots, identified by batch and ballot position (i.e. position 24 would be the 24th ballot in that batch).

The audit of the 38 ballots was performed by three bipartisan teams of one Democrat and one Republican. Ultimately, eight individuals volunteered to help on the bipartisan teams due to participants' time availability. The teams were seated at tables facing the audience so that attendees could easily view the process.



The three bipartisan teams sitting at tables in front of the ballot bags. Two staff from the Boone County Clerk's Office facilitated the checkout of the ballot bags so that the teams could cut the seals on the bags, check the seal verification sheet in the bag, and reseal the ballots at the conclusion of the process.

The three audit teams received a list of which ballots they needed to examine from the batches. After checking out their ballot bag, the teams counted through their assigned batch to find the randomly selected ballot and record on a tally sheet whether the ballot was a "yes" or "no" vote. The data from the tally sheets was entered into the audit software by the bipartisan teams once each team had examined all the ballots on their list.

Audit Results

The teams recorded the results for all 38 ballots with final totals of 30 "yes" and 8 "no." These totals not only mirrored the wide margin of the election night results, but they were statistically significant and met the risk limit so that we only needed one round of counting to complete the audit. The risk-limiting audit was successful, validating the election results! (Appendix C)

Conclusions

Since this election was small with a wide margin of victory (only one issue on the ballot, total of 8,964 ballots cast, 80% margin of victory), this risk-limiting audit was straightforward to organize and execute. The three audit teams were able to easily understand and perform the audit even with no preparation before that day. For any potential future audits, we are now prepared to train and provide context to bipartisan teams in advance so, while we would likely need more teams to process a higher number of ballots for larger and closer elections, we would still be able to accomplish a successful audit quickly and accurately.

We were pleased to confirm that our existing methods for organizing and storing ballots post-election are highly secure and worked well with the recommendations for a risk-limiting audit. The audit requires that ballots be divided into batches and our offices already does this by storing ballots in separate bags by polling place. This made it easy for us to prepare for the audit, as we did not have to change our existing procedures.

Overall, we felt that our risk-limiting audit pilot of the November 2, 2021 Special Election was a valuable addition to our existing post-election audit procedures and helped us show Boone County voters that we are committed to upholding and improving the safeguards in place to ensure accurate and trustworthy elections.

Recommendations

One limitation to a county independently conducting a risk-limiting audit is that the county is only able to audit election races that are wholly contained within its jurisdiction (for example, a state representative district fully within Boone County, a county-wide ballot question, etc.) because the county would need access to every voted ballot in the race. However, these audits can be scaled up for races like Governor or U.S. Senate if they are conducted at a state-wide level. We found the risk-limiting audit to be a valuable tool to provide statistical evidence of the accuracy of our election results and statewide adoption would further instill voter confidence in the results of statewide races, as those typically have greater prominence and national attention.

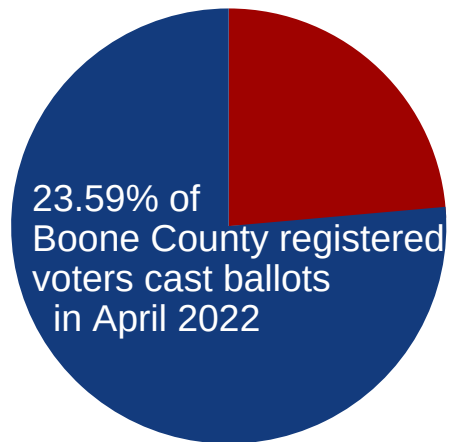
We'd like to extend our heartfelt thanks to local election authorities, election judges, and policy makers for their attendance and participation, including the Missouri Secretary of State's Office, state representatives Hon. Wayne Wallingford, Hon. Cheri Toalson Reisch, Hon. Adam Schwadron, Hon. Ann Kelley, Hon. David Tyson Smith, and Hon. Kevin Windham, and local election authorities Hon. Kara Clark Summers, Hon. Kurt Bahr, Hon. Diane Thompson, and Hon. Shane Schoeller, and to VotingWorks for their assistance in preparing for and conducting the risk-limiting audit.

Appendix A

Batch Name	Number of Ballots
CENTRALBatch1	196
1B&1E&1I&1MBatch2	44
1C&1GBatch3	292
1DBatch4	64
1F&1J&1K&1L&2KBatch5	348
2A&2GBatch6	248
2B&2JBatch7	151
2C&2H&3A&3G&3LBatch8	352
2D&2LBatch9	194
2F&2IBatch10	235
3B&3DBatch11	191
3C&3I&3NBatch12	82
3E&3H&3MBatch13	219
3F&3JBatch14	187
4A&4JBatch15	328
4B&4GBatch16	419
4C&4DBatch17	421
4EBatch18	299
4F&4I&5ABatch19	401
4H&4NBatch20	324
4K&4MBatch21	379
4LBatch22	192
5B&5KBatch23	307
5C&5HBatch24	333
5D&5I&5JBatch25	315
5E&5N&5PBatch26	380
5F&6GBatch27	296
5G&5MBatch28	130
6A&6B&6F&6LBatch29	100
6C&6HBatch30	286
6D&6E&6I&6K&6MBatch31	348
6JBatch32	203
ABSENTEEMAILBatch33	474
ABSENTEEINPERSONBatch34	226

APRIL 2022 GENERAL MUNICIPAL ELECTION: Ballot Content

- MUNICIPAL OFFICES:
 - Columbia Mayor, Council Member Wards Three and Four
 - Ashland Mayor, Alderman Wards One, Two and Three
 - Centralia Alderman Wards One, Two, and Three
 - Sturgeon Alderman at large
 - Board of Trustees: McBaine, Hartsburg, and Pierpont
 - Rocheport Alderman Wards One and Two
 - Hallsville Mayor, Alderman Wards One and Two



BY THE NUMBERS

Registered Voters: 123,887
Total Votes Cast: 29,227
Absentee Ballots: 1,452
Polling Places: 42
Election Judges: 226

APRIL 2022 GENERAL MUNICIPAL ELECTION: Ballot Content Cont.



- Municipal Issues
 - Boone County Use Tax
 - Columbia Use Tax
 - Ashland Use Tax
 - Sturgeon Municipal Election Question
- Board of Education
 - Columbia Public School (and bond issue)
 - Southern Boone County R-1 (and bond issue)
 - Centralia R-6 (and bond issue)
 - Harrisburg R-8 (and bond issue)
 - Hallsville R-4 (and bond issue)
 - New Franklin R-1
 - North Callaway R-1

MAY 2022: REDISTRICTING IN MISSOURI



Every 10 years following the decennial census, the Missouri legislature and two Independent Bipartisan Citizens Commissions analyze and redraw the district boundaries for Missouri's Congressional, state house, and state senate districts. More information about this process is available at <https://oa.mo.gov/budget-planning/redistricting-office>.

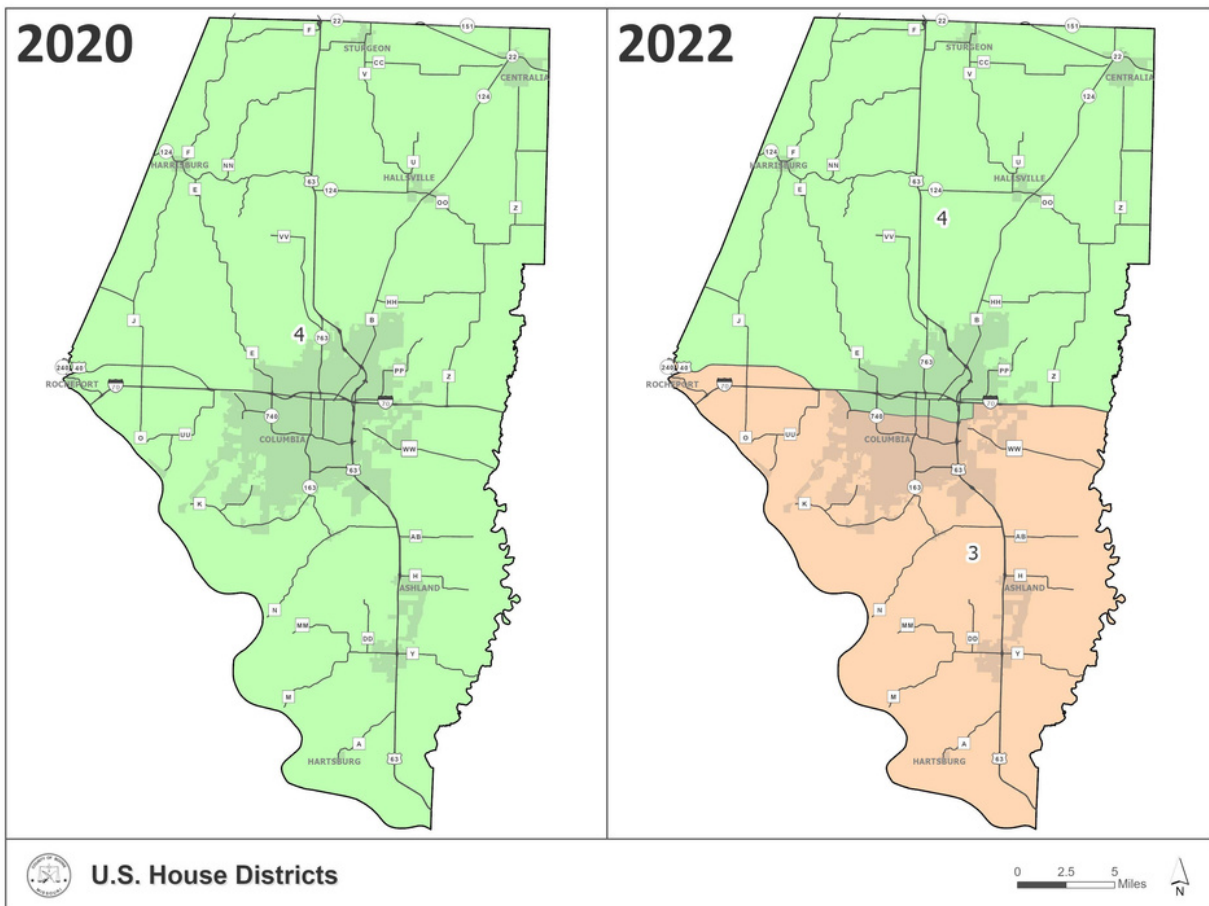
Once new district lines are finalized, the Boone County Clerk's Office, with the assistance of the county's GIS department, incorporates them into the voter registration roll so that voters are assigned to their correct legislative district and receive the correct ballot on Election Day.

Due to COVID-19 delays in finalizing census data, district boundary lines were drawn in early 2022 and applied to the voter registration roll in May of 2022. Updated maps are available online at <https://www.showmeboone.com/clerk/maps.asp>.

REDISTRICTING MAPS

Congressional Redistricting

Prior to 2022 redistricting, Boone County was fully within the 4th Congressional district. The County is now split between the 3rd Congressional District and 4th Congressional District. The district boundary follows Broadway through downtown Columbia.

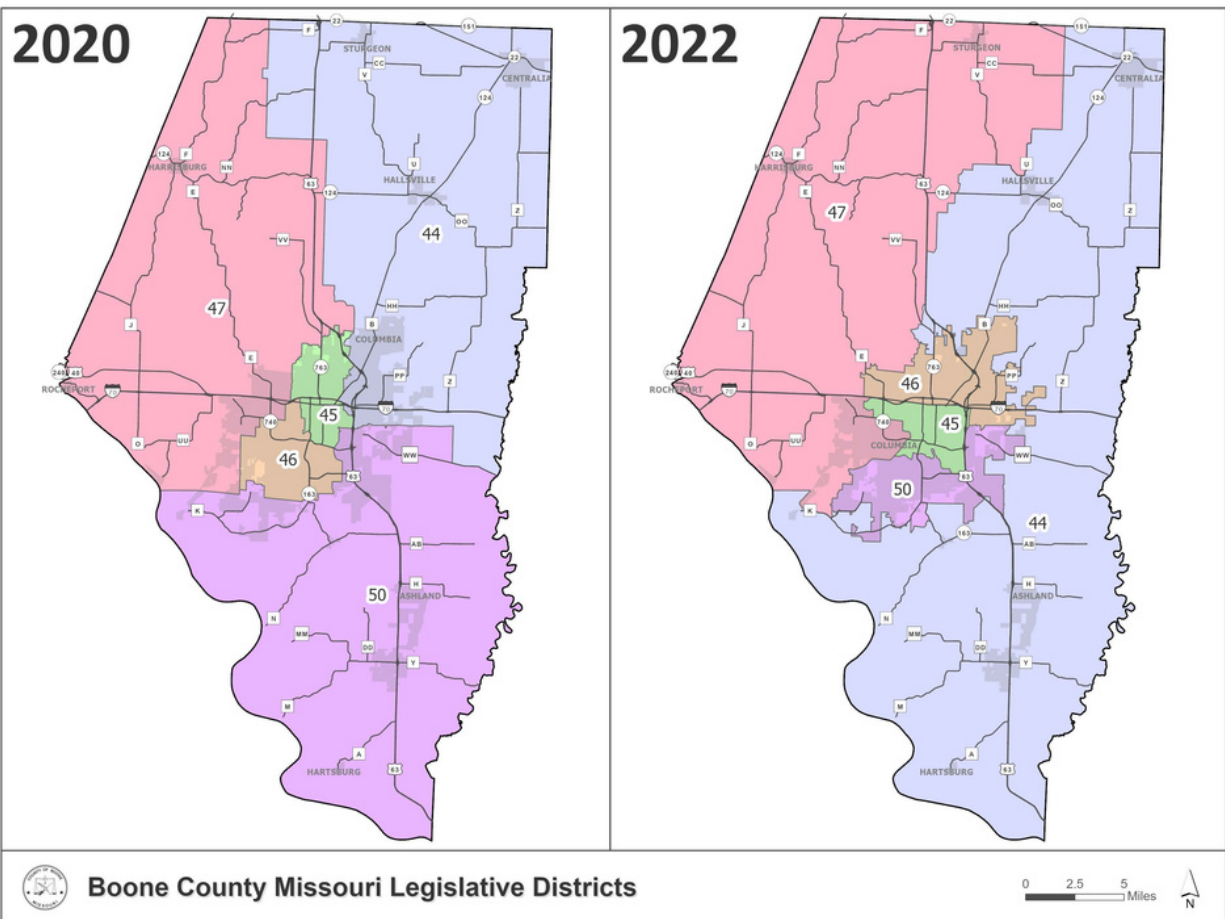


REDISTRICTING MAPS

State Legislative Redistricting

Boone County remains in Senate District 19 and is now the sole county within that district.

Boone County also contains five Missouri House Districts. The district boundaries for House Districts 44, 45, 46, 47, and 50 are fully within Boone County.

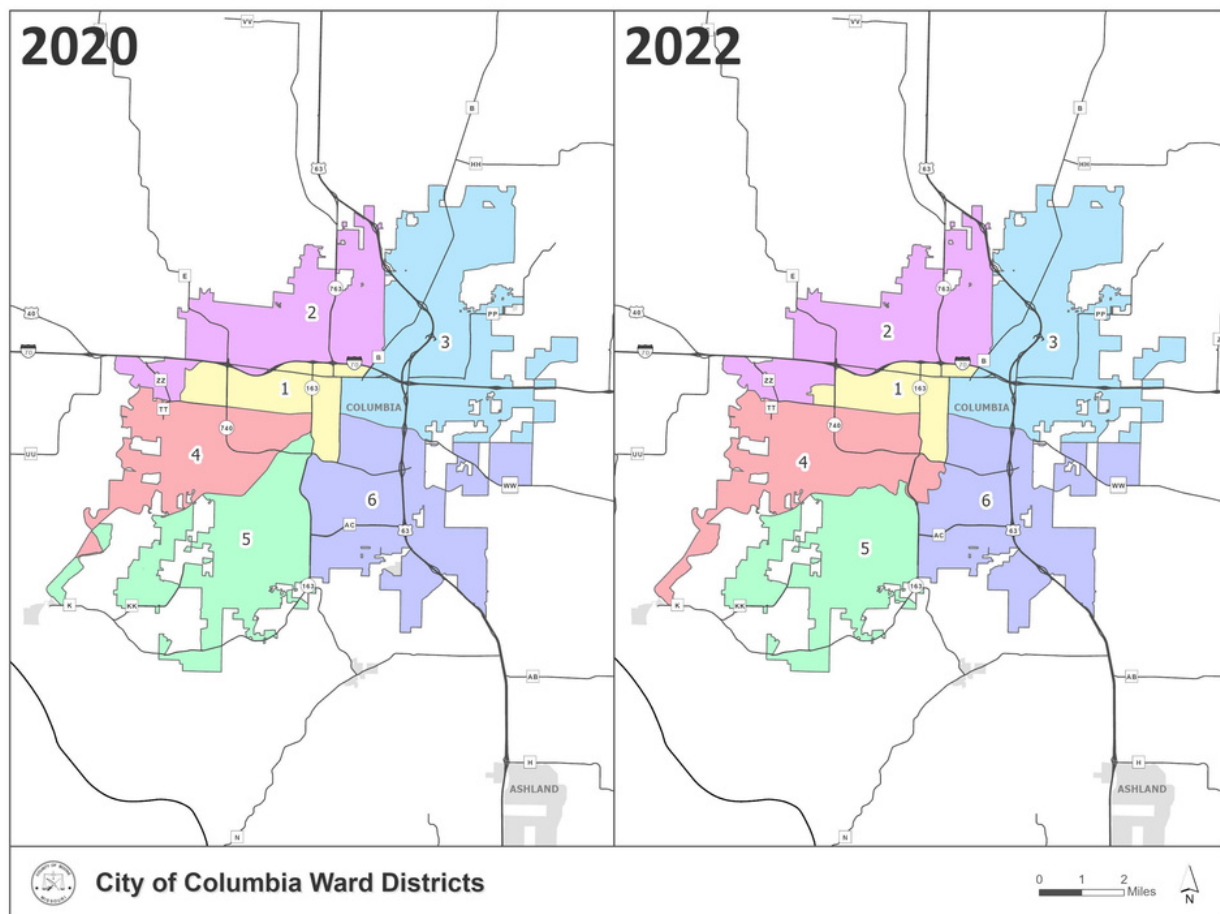


REDISTRICTING MAPS

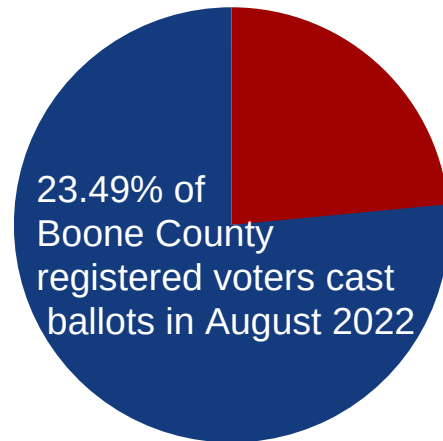
City of Columbia Redistricting

The City of Columbia also engaged in redistricting for its city wards. More information is available on that process at

<https://www.como.gov/boards/ward-reapportionment-committee/>.



AUGUST 2022 PRIMARY ELECTION: Ballot Content



- STATE OF MISSOURI
 - U.S. Senator
 - State Auditor
 - U.S. Representative District 3 and 4
 - Missouri House Districts 44, 45, 46, 47, and 50
 - Circuit Judge, Circuit 13
- BOONE COUNTY
 - Presiding Commissioner
 - County Clerk
 - Clerk of the Circuit Court
 - Prosecuting Attorney
 - Recorder of Deeds
 - County Auditor
 - Collector of Revenue
 - Associate Circuit Judge
- MUNICIPAL
 - Columbia City Council, Ward 3 Run Off Election

BY THE NUMBERS

Registered Voters: 125,775
Total Votes Cast: 29,539
Absentee Ballots: 2,252
Polling Places: 44
Election Judges: 294

HOUSE BILL 1878 BECAME EFFECTIVE ON AUGUST 28, 2022

Photo ID Requirements:

In 2022, the Missouri legislature adopted photo ID requirements for in-person voting. Voters that do not have a photo ID can still vote by provisional ballot on Election Day and the ballot counts as long as the signature on their provisional ballot envelope matches the signature on their voter registration record.

Valid forms of photo ID include a Missouri driver's license or non-driver's license, a U.S. Passport, or a U.S. military ID. If your photo ID is expired, it must have expired after the date of the last general election. Student IDs, out-of-state driver's licenses, and voter ID cards are not valid forms of ID.

If you need help obtaining a photo ID, contact the Secretary of State's Office at <https://s1.sos.mo.gov/voteridhelp>.



HOUSE BILL 1878 BECAME EFFECTIVE ON AUGUST 28, 2022

No Excuse Absentee Voting:

The new law also made two weeks of no excuse absentee voting available to voters. Beginning the second Tuesday before Election Day, any eligible voter can come to the Boone County Clerk's Office and cast their ballot. The process is exactly the same as what voters experience on Election Day: the voter is checked in on the electronic precinct roster, completes their paper ballot, and places it in the voting machine to be tabulated.



House Bill 1878 also expanded the reasons that voters could cast an absentee ballot by mail or six weeks before Election Day. Now healthcare workers, first responders, and law enforcement members are able to cast their ballot anytime in the six weeks leading up to Election Day.

As a result of this change, the Boone County Clerk's Office partnered with two local hospitals to provide convenient, secure, and accessible voting to staff and patients.



Voters are also able to safely and securely cast their absentee ballot at satellite voting locations leading up to elections in Boone County. Borne out of necessity in 2020 to prevent overcrowding at the polls on Election Day, the office continued offering voting opportunities across the county in 2022 and feedback from voters has been overwhelmingly positive. The Clerk's Office was recently awarded a National Association of Counties' Achievement Award to recognize the importance of these efforts.

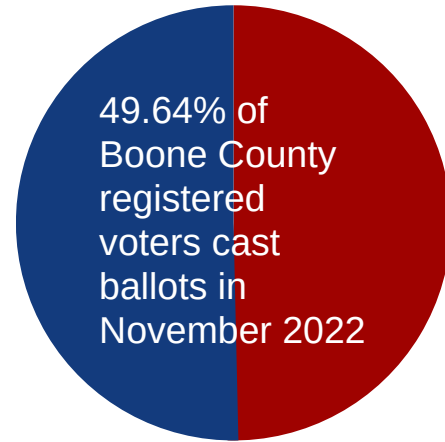
The Clerk's Office appreciates our local community partners in helping provide safe, accessible, and secure elections for Boone County voters:

- Columbia-Boone County Health Department
- Douglass High School, Columbia
- Southern Boone Public Library
- Columbia Mall
- University Hospital
- Boone Hospital
- Centralia Public Library



NOVEMBER 2022 GENERAL ELECTION: Ballot Content

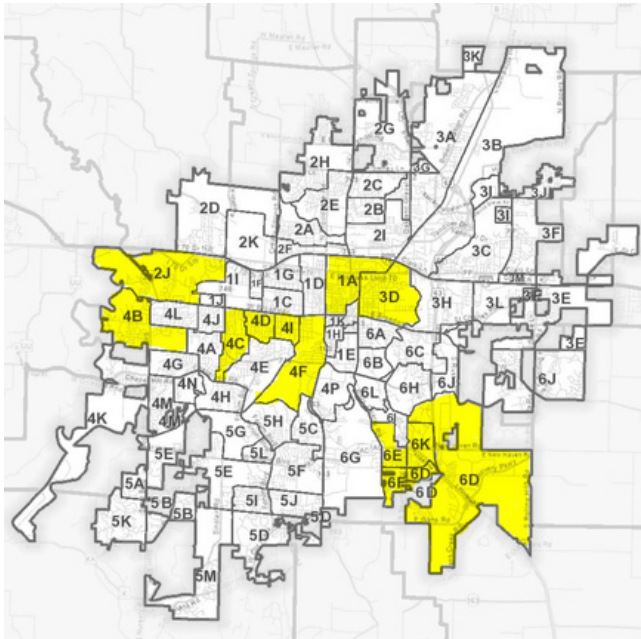
- STATE OF MISSOURI
 - U.S. Senator
 - State Auditor
 - U.S. Representative District 3 and 4
 - Missouri House Districts 44, 45, 46, 47, and 50
 - Circuit Judge, Circuit 13
 - Missouri Supreme Court
 - Missouri Court of Appeals
- Constitutional Initiatives
 - Amendment Numbers 1, 3, 4, 5
 - Constitutional Convention
- COUNTY OFFICES
 - Associate Circuit Judge
 - Presiding Commissioner
 - County Clerk
 - Clerk of the Circuit Court
 - Recorder of Deeds
 - Prosecuting Attorney
 - County Auditor
 - Collector of Revenue
 - County Treasurer
- MUNICIPAL ISSUES
 - Centralia Use Tax
 - Harrisburg Use Tax
 - Rocheport Use Tax and Air Link Rural Broadband



BY THE NUMBERS

Registered Voters: 128,429
Total Votes Cast: 63,746
Absentee Ballots: 8,646
Polling Places: 74
Election Judges: 558

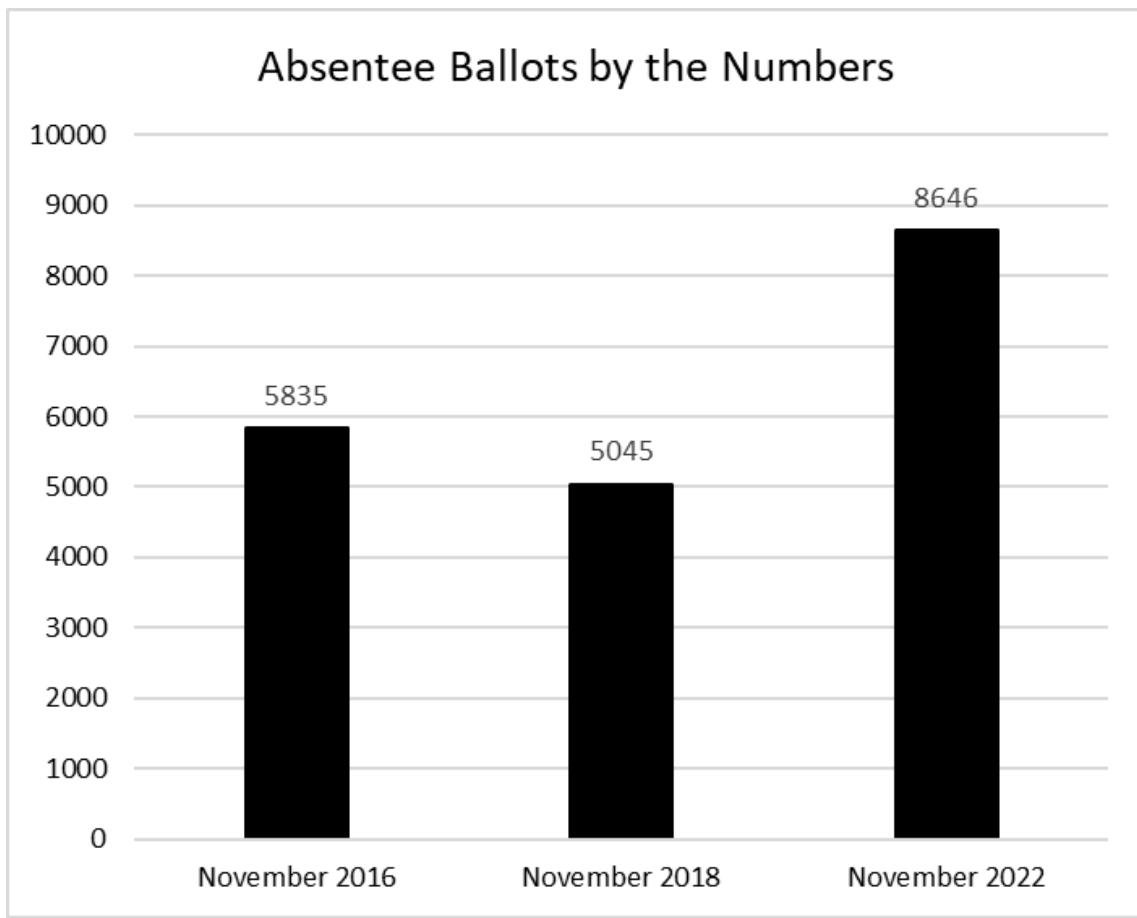
NOVEMBER 2022 GENERAL ELECTION: Data & Graphs



Nearly 6000 voters cast their ballot during the two weeks of no-excuse absentee and absentee voters accounted for 14% of our overall voter turnout. The most popular precincts for absentee voters (where absentee ballots accounted for 20% or more of the precinct's turnout) are highlighted on the map and include 6K, 1A, 6E&6F, 4F&4I, 4C&4D, 2J, 3D, 4B, and 6D&28.

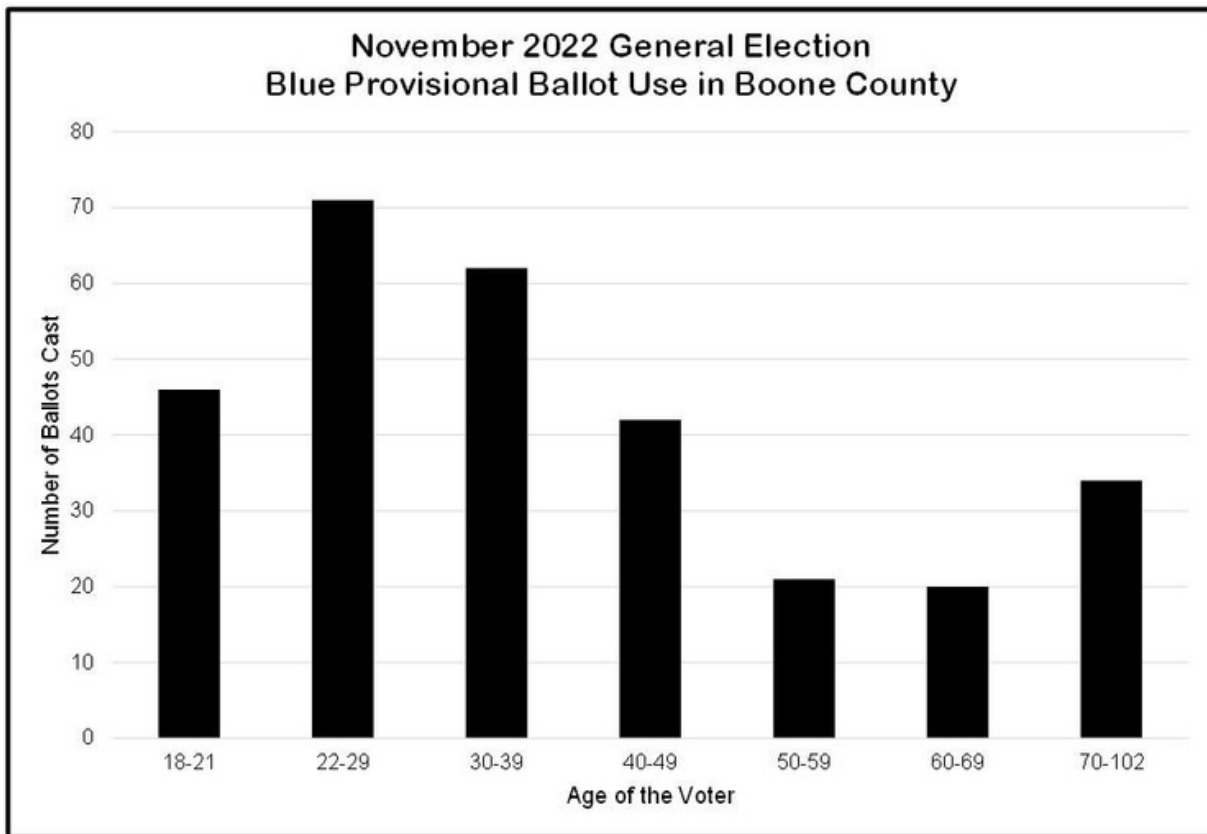
Three of the top five busiest polling places were central polling places (meaning any Boone County voter could cast a ballot there), but it was the Ashland Optimist Club Building that took first place for the most voters at a poll in Boone County on November 8th.





More voters took advantage of absentee voting in the November 2022 than in previous comparable elections. Not only did the number of voters casting absentee ballots increase, but the proportion of absentee voters compared to the overall turnout increased, as well.

Election	Percentage of Absentee Voters Compared to Overall Turnout
November 2016	6%
November 2018	7%
November 2022	14%



This was the first election that voters were required to present a photo ID at the polling place or vote a blue provisional ballot. 296 blue provisional ballots were cast and 280 were counted. In preparing for the election, we expected that we would receive the majority of blue provisional ballots from our college-aged population, but the actual distribution was far more varied. The Hearnese Center central poll still had the most provisional ballots cast (44 total), but 12 polling places had no provisional ballots cast at all. Knowing this information helps us know where to send larger numbers of blue provisional ballot envelopes and how many provisional ballots to expect to adjudicate in future elections.

WHAT'S IN STORE FOR 2024

"I VOTED" STICKER CONTEST

High school-aged Boone County students are invited to create Boone County's next "I voted" sticker for the 2024-2025 elections. Students can submit their design between September 19 and October 24 at showmeboone.com/clerk/contest.asp



COMMUNITY ENGAGEMENT

Find the Boone County Clerk's Office at community events across the county, helping voters to prepare for the upcoming elections in 2024. Reach out to the office if you have a community event that you'd like us to be at!

VOTER EDUCATION & POLL WORKER RECRUITMENT

Voters receive election information by mail, email, and on social media. Be sure to follow the Boone County Clerk's Office on Facebook, Twitter/X, Instagram, and Tiktok. Our website, vote.boonemo.org, has information about registering to vote, finding your polling place and sample ballot, and signing up to be a poll worker in 2024.



Contact the Boone County Clerk's Office

573.886.4375 | clerk@boonecountymo.org | 801 E. Walnut, Room 236, Columbia