

# CERTIFIED COPY OF ORDER

STATE OF MISSOURI }  
County of Boone } ea.

July Session of the July Adjourned

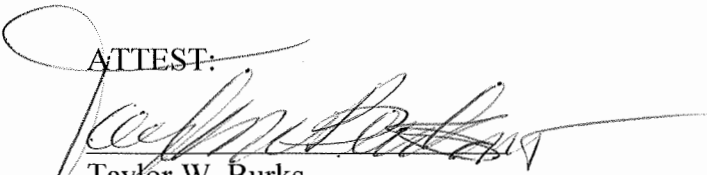
Term. 2018

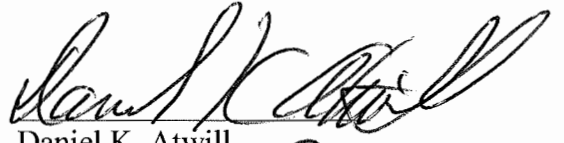
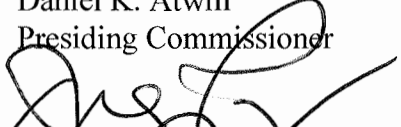

In the County Commission of said county, on the 5th day of July 2018  
the following, among other proceedings, were had, viz:

Now on this day the County Commission of the County of Boone does hereby approve the attached Contract Amendment Number One between Boone County and Sabre Communications Corporation.

The terms of the amendment are stipulated in the attached Amendment. It is further ordered the Presiding Commissioner is hereby authorized to sign said Contract Amendment Number One.

Done this 5th day of July, 2018.

ATTEST:  
  
Taylor W. Burks  
Clerk of the County Commission

  
Daniel K. Atwill  
Presiding Commissioner  
  
Fred J. Parry  
District I Commissioner  
  
Janet M. Thompson  
District II Commissioner

# Boone County Purchasing

**Melinda Bobbitt, CPPO, CPPB**  
Director of Purchasing



613 E. Ash St., Room 110  
Columbia, MO 65201  
Phone: (573) 886-4391  
Fax: (573) 886-4390

---

## MEMORANDUM

TO: Boone County Commission  
FROM: Melinda Bobbitt, CPPO, CPPB  
DATE: June 25, 2018  
RE: Cooperative Contract: *05715 – Radio Tower*

Dave Dunford, Radio Consultant for Boone County, requests that Boone County Joint Communications utilize the NASPO Value-Point cooperative contract *05715* to purchase a 180' Sabre Model S3R Self-Supporting Radio Tower from Sabre Communications Corporation of Sioux City, Iowa.

Cost is \$54,609.05 and invoice will be paid from department 2706 – Radio Network Improvements, account 91300 – Machinery & Equipment. The budget for the Boone County Barn (BCB) tower site project is \$504,194.00.

cc: Contract File  
Chad Martin, Joint Communications  
Dave Dunford, Radio Consultant

**CONTRACT AMENDMENT NUMBER ONE  
FOR  
RADIO TOWER, SELF-SUPPORTING 180', SABRE MODEL S3R**

The Agreement **05715** dated the 22nd day of April, 2018 made by and between Boone County, Missouri and **Sabre Communications Corporation** for and in consideration of the performance of the respective obligations of the parties set forth herein, is amended as follows:

1. REPLACE the quote dated February 26, 2018 with the attached quote dated May 24, 2018.


	<u>List</u>	<u>5% Discount Off List</u>
180' Sabred Model S3R Self-Supporting Radio Tower	\$59,625.00	\$56,643.75
Tower Freight to Boone County, MO		\$1,367.00
Anchor Bolt Freight to Boone County, MO		\$292.00
 GRAND TOTAL		 \$58,302.75

2. Except as specifically amended hereunder, all other terms, conditions and provisions of the original agreement shall remain in full force and effect.

**IN WITNESS WHEREOF** the parties through their duly authorized representatives have executed this agreement on the day and year first above written.

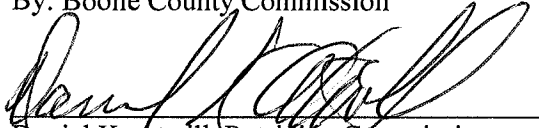
**SABRE COMMUNICATIONS CORPORATION**

**BOONE COUNTY, MISSOURI**

By: 

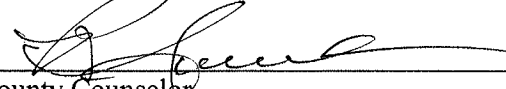
By: Boone County Commission

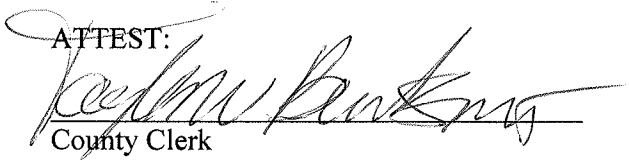
Title: SVP Telecom Sales

  
Daniel K. Atwill, Presiding Commissioner

APPROVED AS TO FORM:


ATTEST:

  
County Counselor

  
County Clerk

AUDITOR CERTIFICATION: In accordance with §RSMo 50.660, I hereby certify that a sufficient unencumbered appropriation balance exists and is available to satisfy the obligation(s) arising from this contract. (Note: Certification of this contract is not required if the terms of this contract do not create a measurable county obligation at this time.)

2706 / 91300 - \$58,302.75

 by jj 06/27/2018  
Signature Date Appropriation Account



**PROPOSAL**

Prepared for: **BOONE COUNTY, MO**  
**613 E. Ash Street**  
**Columbia, MO 65201**

Attn: Ms. Melinda Bobbitt

Proposal No.: **18-4403-NASPO-R5**  
 Date: **06/05/18** Page 1 of 4  
 Reference: **180' S3R/Hallsville, MO/  
 NASPO CONTRACT #05715**  
 Freight: **Origin**

**SABRE MODEL S3R SELF-SUPPORTING TOWER**

Quantity of one (1) 180' Sabre Model S3R self-supporting tower.

The tower will be triangular in design with a base width of 17' - 3" tapering to 5' - 0" at the top. The tower will utilize solid round steel for tower legs and angular steel for bracing.

The tower will be designed for a basic wind speed of 90 mph with 0" of radial ice, and 40 mph with 1" of radial ice, in accordance with ANSI/TIA-222-G. *"The wind speed is increased in the design to achieve the 1.25 Importance Factor requested."*

*This structure will also meet the requirements for an Ultimate Wind Speed of 120 mph (Risk Category IV), in accordance with the 2012 International Building Code.*

**Revision G Parameters:**

- Structure Class III
  - Exposure Category C
  - Topographic Category 1
- \*\*Refer to Notes section for definitions of Revision G parameters.*

The tower will be designed to support the following equipment:

	ANTENNA MODEL NUMBER (QTY)	RADOME		ELEVATION C.O.R.	TX. LINE SIZE & TYPE	FREQUENCY	AZIMUTH TO NORTH	ANTENNA MOUNT (DESIGN)	MOUNT PROVIDED	
		YES	NO						YES	NO
1	(3) DB809DK-Y Decibel Antennas		X	178' At Base	(3) 1-1/4"	N/A	Unknown	One (1) Fixed Platform	X	
2	(3) ATC GD1V40 Antennas		X	178' At Base	(6) 7/8"	N/A	Unknown	Same as above	X	
3	(3) SP3-5.2 Dishes		X	178' At Base	(3) 7/8"	N/A	Unknown	Same as above	X	
4	(2) 6' H.P. Dishes		X	170'	(2) EW52	6 GHz	60°, 180°	Two (2) 4-1/2" O.D. Leg-type Dish Mounts	X	
5	(1) 4' H.P. Dish		X	170'	(1) EW52	6 GHz	300°	One (1) 4-1/2" O.D. Leg-type Dish Mount	X	
6	(2) 6' H.P. Dishes		X	160'	(2) EW52	6 GHz	60°, 180°	Two (2) 4-1/2" O.D. Leg-type Dish Mounts	X	
7	(1) 4' H.P. Dish		X	160'	(1) EW52	6 GHz	300°	One (1) 4-1/2" O.D. Leg-type Dish Mount	X	
8	(2) 6' H.P. Dishes		X	150'	(2) EW52	6 GHz	60°, 180°	Two (2) 4-1/2" O.D. Leg-type Dish Mounts	X	
9	(1) 4' H.P. Dish		X	150'	(1) EW52	6 GHz	300°	One (1) 4-1/2" O.D. Leg-type Dish Mount	X	
10	(3) ATC GD1V40 Antennas		X	125' At Base	(6) 7/8"	N/A	Unknown	Three (3) 6' Sidearms	X	
11	(12) 5960110 Antennas		X	115'	(12) 1 5/8"	N/A	Unknown	Three (3) 12' V-Boom Sector Mounts with 3' Standoff w/ Work Platforms		X
12	(3) TTAs (24in x 30in 12in)		X	115'	(3) 1 5/8"	N/A	Unknown	Same as above		X
13	(3) DB224 Decibel Antennas		X	90' At Base	(3) 7/8"	N/A	Unknown	Three (3) 6' Sidearms	X	
14	(3) DB222 Decibel Antennas		X	50' At Base	(3) 1/2"	N/A	Unknown	Three (3) 3' Sidearms		X



**PROPOSAL**

Prepared for: **BOONE COUNTY, MO**  
**613 E. Ash Street**  
**Columbia, MO 65201**  
  
**Attn: Ms. Melinda Bobbitt**

**Proposal No.: 18-4403-NASPO-R5**  
**Date: 06/05/18** Page 2 of 4  
**Reference: 180' S3R/Hallsville, MO/**  
**NASPO CONTRACT #05715**  
**Freight: Origin**

<b>ITEM I</b>	<b>TOWER MATERIALS (NASPO PART# 16-3630-MEG).....</b>	<b>\$59,625.00</b>
	<b>(NASPO 5% Discount).....</b>	<b>\$56,643.75</b>

Materials to be provided include:

- Complete tower steel and hardware
- Anchor bolts and templates
- Leg-to-Leg templates
- Construction step bolts (see notes)
- 16" outside climbing ladder with required 7" standoffs
- Three (3) waveguide support ladders (to support all lines)
- One (1) fixed platform with six (6) 10' mounting pipes at the 178' elevation
- Two (2) 4-1/2" O.D. leg dish mounts each with one (1) stiffarm mounting assembly at the 170' elevation
- One (1) 4-1/2" O.D. leg dish mount with one (1) stiffarm mounting assembly at the 170' elevation
- Two (2) 4-1/2" O.D. leg dish mounts each with one (1) stiffarm mounting assembly at the 160' elevation
- One (1) 4-1/2" O.D. leg dish mount with one (1) stiffarm mounting assembly at the 160' elevation
- Two (2) 4-1/2" O.D. leg dish mounts each with one (1) stiffarm mounting assembly at the 150' elevation
- One (1) 4-1/2" O.D. leg dish mount with one (1) stiffarm mounting assembly at the 150' elevation
- Three (3) 6' sidearms each with one (1) tieback kit and one (1) 10' mounting pipe at the 125' elevation
- Three (3) 6' sidearms each with one (1) tieback kit and one (1) 5' mounting pipe at the 90' elevation
- Safety cable kit without harness (200')
- One (1) 2-7/8" x 15' lightning rod extension
- One (1) 8' x 3/4" lightning rod copper clad and stiffener
- P.E. certified tower profile and foundation drawings
- Final erection drawings

**TOWER FREIGHT TO BOONE COUNTY, MISSOURI..... \$ 1,367.00**

**ANCHOR BOLT FREIGHT TO BOONE COUNTY, MISSOURI..... \$ 292.00**

*\*The above pricing is for one (1) set of anchor bolts and templates, and one (1) leg-to-leg template to be shipped together in one (1) shipment to the same destination at the same time.*

**NOTES: Terms will be reviewed upon receipt of order.**

**Classification of Structure:**

- Class Three  
Structures used primarily for essential communications such as: civil or national defense, emergency, rescue or other disaster operations, military and navigation facilities.

**Exposure Categories:**

- Exposure C  
Open terrain with scattered obstructions having heights generally less than 30 feet. This category includes flat, open country, grasslands and shorelines in hurricane prone regions. **Exposure C is the standard default for exposure categories.**

**PROPOSAL**

Prepared for: **BOONE COUNTY, MO**  
613 E. Ash Street  
Columbia, MO 65201

Attn: Ms. Melinda Bobbitt

Proposal No.: **18-4403-NASPO-R5**  
Date: **06/05/18** Page 3 of 4  
Reference: **180' S3R/Hallsville, MO/  
NASPO CONTRACT #05715**  
Freight: **Origin**

---

**Topographic Categories:**

- Category 1  
No abrupt changes in general topography, e.g. flat or rolling, no wind speed-up consideration shall be required. *Category one is the standard default for the topographic categories.*

The permit package includes a profile drawing of the structure with member sizes; anchor bolt details; descriptive notes; structural calculations; a table of supported antennas, mounts and feedlines; and a foundation sketch and calculations (if applicable).

This quotation is based on ANSI/TIA-222-G and Customer provided specifications. Any information not provided by ANSI/TIA-222-G or the Customer has not been considered.

Foundation and anchor bolt designs are based strictly on ANSI/TIA-222-G. Any additional requirements may result in increased foundation size and price.

**Dimensional information is preliminary only; it may change based on final engineering.**

All Sabre mounts are quoted with support pipes of appropriate length for most applications if not otherwise specified. If different support pipe lengths are required at the time of the order, additional costs may be incurred.

Cable type safety climbing device provided does not include harness.

Freight charges quoted are for provided materials only. Additional freight charges may be incurred with the order of additional items.

All tower materials will be hot dip galvanized as outlined in ASTM A-123.

Construction step bolts have been quoted to the 20' elevation on all three legs for safety and ease of construction. Step bolts should not be used for climbing without the use of a safety climbing device or fall protection equipment.

This proposal does not include any sales, use, excise, contractors or any other taxes not specifically detailed in this proposal.

If a Customer requests to pick up a tower, a \$300.00 per truck charge may apply for dunnage and loading.

Storage charges of \$350.00 per month may apply starting sixty (60) days after original scheduled ship date.

**Due to material price fluctuations, Sabre reserves the right to review all material pricing prior to accepting any order. Any structure order placed on hold is subject to a price review at the time of its release from hold status.**

**Due to freight price fluctuations, Sabre reserves the right to review all freight pricing prior to accepting any order.**



**PROPOSAL**

Prepared for: **BOONE COUNTY, MO**  
613 E. Ash Street  
Columbia, MO 65201

Attn: Ms. Melinda Bobbitt

Proposal No.: **18-4403-NASPO-R5**  
Date: **06/05/18** Page **4** of **4**  
Reference: **180' S3R/Hallsville, MO/  
NASPO CONTRACT #05715**  
Freight: **Origin**

---

*Delivery is FOB destination. Contractor agrees to bear all risks of loss, damage, or destruction of the products ordered hereunder that occurs prior to delivery, except loss or damage attributable to Purchaser's fault of negligence and such loss, damage, or destruction shall not release Contractor from any obligation hereunder.*

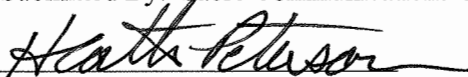
*Delivery will be approximately 6 weeks after receipt of required information and contingent upon backlog at the time of order.*

---

This proposal is based on the terms and conditions proposed above including the attached standard terms and conditions and is subject to our review and final acceptance of your order. No other terms are valid unless signed by an authorized officer of Sabre Communications.

---

Submitted By: Sabre Communications Corporation

  
Heath Peterson  
Government/Utility Sales Manager

Acceptance of Customer:

Please enter our order for the above items in accordance with this proposal.

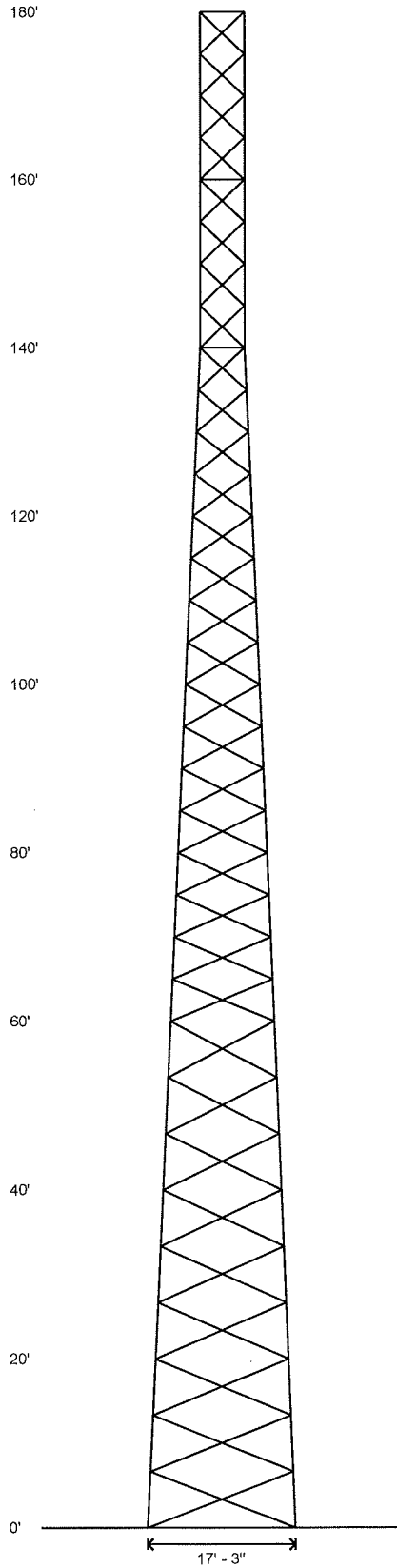
Signature \_\_\_\_\_

Name (print) \_\_\_\_\_

Title \_\_\_\_\_ Date \_\_\_\_\_

Purchase Order No. \_\_\_\_\_

SIZES ARE PRELIMINARY AND MAY CHANGE UPON FINAL DESIGN										
Legs	4.5 S.R.	4.25 S.R.	3.75 S.R.	3.5 S.R.	3.0 S.R.	2.5 S.R.	2.0 S.R.			
Diagonals	L 3 X 3 X 1/4	L 3 X 3 X 3/16	L 2 1/2 X 2 1/2 X 3/16	L 2 X 2 X 1/4	L 2 X 2 X 3/16	L 2 X 2 X 1/4	L 2 X 2 X 1/8			
Horizontals	NONE									
Brace Bolts	(1) 3/4"	(1) 3/8"								
Top Face Width	15.5'	13.75'	10.25'	8.5'	6.75'	5'				
Panel Count/Height	9 @ 6.6667'									
Section Weight	5488	4887	3606	3134	2528	2066	1802	1135		



### Base Reactions

Total Foundation		Individual Footing	
Shear (kips)	64.74	Shear (kips)	38.28
Axial (kips)	189.89	Compression (kips)	462
Moment (ft-kips)	6796	Uplift (kips)	423
Torsion (ft-kips)	-37.66		

### Material List

Display	Value
A	L 2 X 2 X 1/8
B	L 2 X 2 X 1/4

### Notes


- 1) All legs are A572 Grade 50.
- 2) All braces are A572 Grade 50.
- 3) All brace bolts are A325-X.
- 4) The tower model is S3R Series SD.
- 5) Transmission lines are to be attached to 15 hole waveguide ladders.
- 6) Azimuths are relative (not based on true north).
- 7) Foundation loads shown are maximums.
- 8) (6) 1 1/2" dia. F1554 grade 105 anchor bolts per leg. Minimum 66.125" embedment from top of concrete to top of nut.
- 9) All unequal angles are oriented with the short leg vertical.
- 10) Weights shown are estimates. Final weights may vary.
- 11) The tower design meets the requirements for an Ultimate Wind Speed of 120 mph (Risk Category III), in accordance with the 2012 International Building Code.
- 12) This tower was designed for a basic wind speed of 94 mph with 0" of radial ice, and 40 mph with 1" of radial ice, in accordance with ANSI/TIA-222-G, Structure Class III, Exposure Category C, Topographic Category 1.
- 13) The foundation loads shown are factored loads.
- 14) "The 91 mph wind speed is used to ensure a 1.25 Importance Factor as requested."

	<b>Sabre Communications Corporation</b> 7101 Southbridge Drive P.O. Box 658 Sioux City, IA 51102-0658 Phone: (712) 268-6690 Fax: (712) 279-0814	Quote: <b>18-4403-HGP-R4</b>
	Information contained herein is the sole property of Sabre Communications Corporation, constitutes a trade secret as defined by Iowa Code Ch. 550 and shall not be reproduced, copied or used in whole or part for any purpose whatsoever without the prior written consent of Sabre Communications Corporation.	Customer: <b>BOONE COUNTY, MO</b> Site Name: <b>Hallsville, MO</b> Description: <b>180' S3R</b> Date: <b>5/23/2018</b> By: <b>RKR</b> Page: <b>1</b>



**Designed Appurtenance Loading**

Elev	Description	Tx-Line	Elev	Description	Tx-Line
188.3	33.4 sq. ft. EPA		150	(2) Leg Dish Mount	
187.7	(3) DB809DK-Y		150	Leg Dish Mount	
178	(3) Leg Dish Mount		150	(1) 4' H.P. Dish	(1) EW52
178	0.01 sq. ft. EPA	(3) 1 1/4"	150	(2) 6' H.P. Dish	(2) EW52
178	9 sq. ft. EPA		135.3	26.7 sq. ft. EPA	
178	Platform - Fixed		125	(3) 6ft Sidearms	
178		(6) 7/8"	125		(6) 7/8"
178	(3) SP2-5.2	(3) 7/8"	115	3V-Boom - 12ft Face - 3ft Standoff w/ Work Platforms	
170	(2) Leg Dish Mount		115	(12) 5960110	(12) 1 5/8"
170	Leg Dish Mount		115	(3) TTA (24in x 30in 12in)	(3) 1 5/8"
170	(1) 4' H.P. Dish	(1) EW52	100.62	(3) DB224	
170	(2) 6' H.P. Dish	(2) EW52	90	(3) 6ft Sidearms	
160	(2) Leg Dish Mount		90		(3) 7/8"
160	Leg Dish Mount		55.29	(3) DB222	
160	(1) 4' H.P. Dish	(1) EW52	50	(3) 3ft Sidearms	
160	(2) 6' H.P. Dish	(2) EW52	50		(3) 1/2"

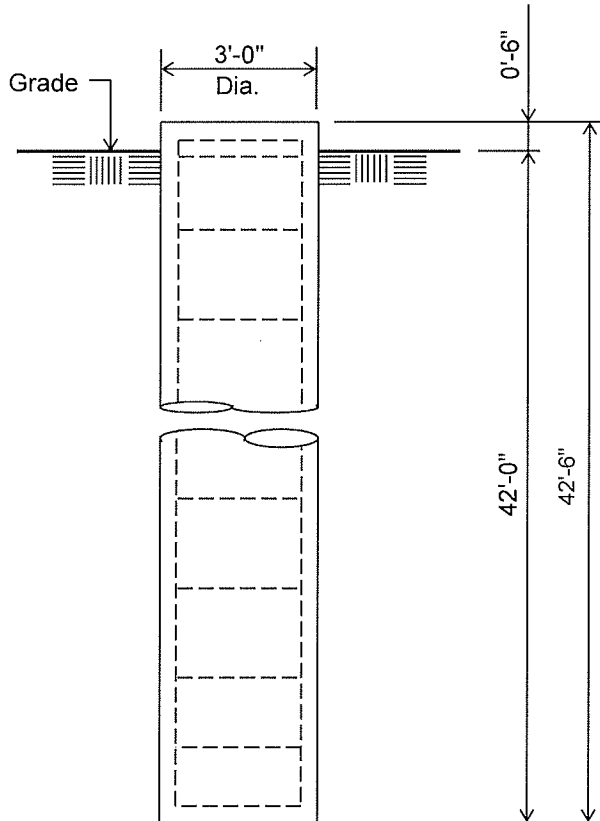
 <p><b>Sabre Industries</b> Towers and Poles</p>	<p><b>Sabre Communications Corporation</b> 7101 Southbridge Drive P.O. Box 658 Sioux City, IA 51102-0658 Phone: (712) 258-6690 Fax: (712) 279-0814</p>	Quote: 18-4403-HGP-R4
	Information contained herein is the sole property of Sabre Communications Corporation, constitutes a trade secret as defined by Iowa Code Ch. 550 and shall not be reproduced, copied or used in whole or part for any purpose whatsoever without the prior written consent of Sabre Communications Corporation.	Customer: BOONE COUNTY, MO
		Site Name: Hallsville, MO
		Description: 180' S3R
		Date: 5/23/2018 By: RKR Page: 2

**Customer: BOONE COUNTY, MO**

**Site: Hallsville, MO**

180 ft. Model S3R Series SD Self Supporting Tower At  
94 mph Wind with no ice and 40 mph Wind with 1 in. Ice per ANSI/TIA-222-G.

**PRELIMINARY -NOT FOR CONSTRUCTION-**



**ELEVATION VIEW**

(11.13 Cu. Yds. each)

(3 REQUIRED; NOT TO SCALE)

**Notes:**

1). Concrete shall have a minimum 28-day compressive strength of 4500 PSI, in accordance with ACI 318-11.

2). Rebars to conform to ASTM specification A615 Grade 60.

3). All rebar to have a minimum of 3" concrete cover.

4). All exposed concrete corners to be chamfered 3/4".

5.) The foundation design is based on the geotechnical report by Crockett GTL Project No. G18307, dated: 03/29/2018.

6). See the geotechnical report for drilled pier installation requirements, if specified.

7). The foundation is based on the following factored loads:

Factored uplift (kips) = 423.00

Factored download (kips) = 462.00

Factored shear (kips) = 38.00

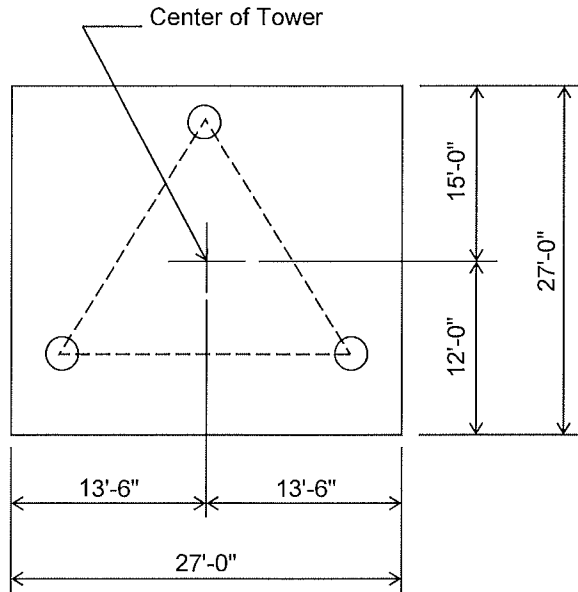
Rebar Schedule per Pier	
Pier	(14) #10 vertical rebar w/#4 ties, two (2) within top 5" of pier then 12" C/C

8). The bottom anchor bolt template shall be positioned as closely as possible to the bottom of the anchor bolts.

**Customer: BOONE COUNTY, MO**  
**Site: Hallsville, MO**

180 ft. Model S3R Series SD Self Supporting Tower At  
94 mph Wind with no ice and 40 mph Wind with 1 in. Ice per ANSI/TIA-222-G.

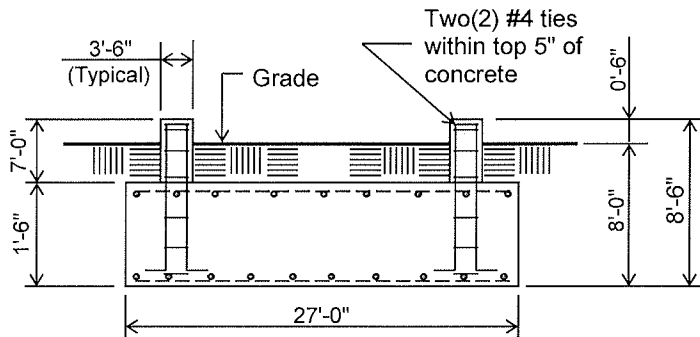
**PRELIMINARY -NOT FOR CONSTRUCTION-**



**PLAN VIEW**

**Notes:**

- 1). Concrete shall have a minimum 28-day compressive strength of 4500 PSI, in accordance with ACI 318-11.
- 2). Rebar to conform to ASTM specification A615 Grade 60.
- 3). All rebar to have a minimum of 3" concrete cover.
- 4). All exposed concrete corners to be chamfered 3/4".
- 5.) The foundation design is based on the geotechnical report by Crockett GTL Project No. G18307, dated: 03/29/2018.



**ELEVATION VIEW**

(47.98 Cu. Yds.)  
(1 REQD.; NOT TO SCALE)

**CAUTION:** Center of tower is not in center of slab.

- 6). See the geotechnical report for compaction requirements, if specified.
- 7). The foundation is based on the following factored loads:  
Factored download (kips) = 53.33  
Factored overturn (kip-ft) = 6,798.33  
Factored shear (kips) = 64.74

8). 6.5 ft of soil cover is required over the entire area of the foundation slab.

Rebar Schedule per Mat and per Pier	
Pier	(16) #8 vertical rebar w/ hooks at bottom w/ #4 Rebar ties, two (2) within top 5" of pier then 11" C/C
Mat	(43) #10 horizontal rebar evenly spaced each way top and bottom. (172 total)

9). The bottom anchor bolt template shall be positioned as closely as possible to the bottom of the anchor bolts.

# CERTIFIED COPY OF ORDER

STATE OF MISSOURI }  
County of Boone } ea.

July Session of the July Adjourned

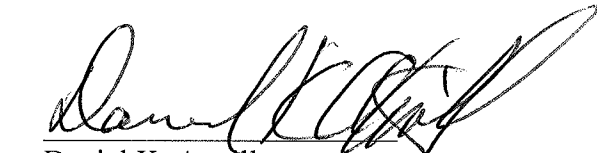
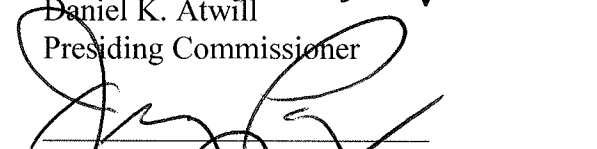
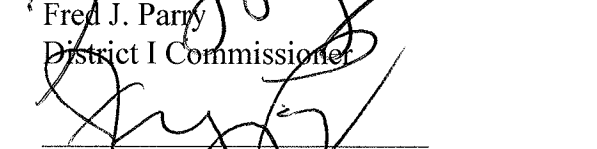
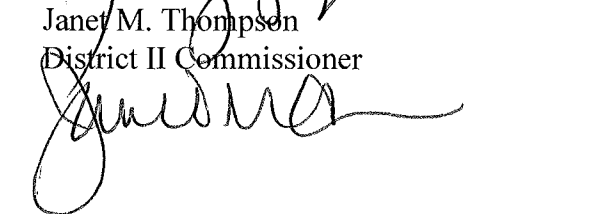
Term. 20 18

In the County Commission of said county, on the 5th day of July 2018  
the following, among other proceedings, were had, viz:

Now on this day the County Commission of the County of Boone does hereby approve the Boone County Commission Minutes during the II Quarter, 2018, beginning on 4/2/2018 through 6/29/2018.

Done this 5th day of July, 2018.

ATTEST:  
  
Taylor W. Burks  
Clerk of the County Commission

  
Daniel K. Atwill  
Presiding Commissioner  
  
Fred J. Parry  
District I Commissioner  
  
Janet M. Thompson  
District II Commissioner  


# CERTIFIED COPY OF ORDER

STATE OF MISSOURI

} ea.

July Session of the July Adjourned

Term. 20 18

County of Boone

In the County Commission of said county, on the

5th

day of July

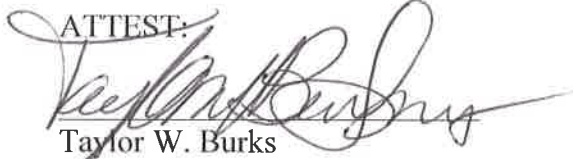
2018

the following, among other proceedings, were had, viz:

Now on this day the County Commission of the County of Boone does hereby appoint the following:

Name	Board	Period
Steve Koirtyohann	P&Z Commission	August 1, 2018 through July 31, 2022

Done this 5th day of July, 2018.

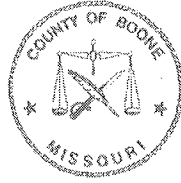
ATTEST:  
  
 Taylor W. Burks  
 Clerk of the County Commission

  
 Daniel K. Atwill  
 Presiding Commissioner

  
 Fred J. Parry  
 District I Commissioner

  
 Janet M. Thompson  
 District II Commissioner

Dan Atwill, Presiding Commissioner  
Fred J. Parry, District I Commissioner  
Janet Thompson, District II Commissioner



Boone County Government Center  
801 E. Walnut, Room 333  
Columbia, MO 65201

573-886-4307  
E-mail: [commission@boonecountymo.org](mailto:commission@boonecountymo.org)

RECEIVED  
JUN 26 2018  
BY:

# Boone County Commission

## BOONE COUNTY BOARD OR COMMISSION APPLICATION FORM

appet 7-3-18 &

Board or Commission: Planning & Zoning Commission Term: 4 yrs.

Current Township: Rocky Fork Township Today's Date: \_\_\_\_\_

Name: Steve Koertyshann

Home Address: 9901 Rt. 00

City: Hollsville, Mo Zip Code: 65255

Business Address: Same

City: \_\_\_\_\_ Zip Code: \_\_\_\_\_

Home Phone: \_\_\_\_\_ Work Phone: 573-881-5364

Fax: \_\_\_\_\_ E-mail: Koerty55@a@gmail.com

Qualifications: \_\_\_\_\_

Approximately 35 yrs in construction business  
in Boone County.

Ability to listen to both sides of an issue.

Ability to make a decision.

Desire to give back to the community.

Knowledge of land use issues.

Past Community Service:

- ① Hillsdale School Board
- ② Hillsdale Community Development Corp.
- ③ Trustee Reel Top Christian Church
- ④ Hillsdale C.E.R.T.
- ⑤ Sponsor of Lion's Clubs

References:

Gay & Elaine George	581-0941	686-3048
John Baggett	864-2469	
Ann Fagan	639-0220	
Alex Wargandt	639 6969	

I have no objections to the information in this application being made public. To the best of my knowledge at this time I can serve a full term if appointed. I do hereby certify that the above information is true and accurate.

  
Applicant Signature

Return Application  
To:

Boone County Commission Office  
Boone County Government Center  
801 East Walnut, Room 333  
Columbia, MO 65201  
Fax: 573-886-4311

An Affirmative Action/Equal Opportunity Institution