

**CERTIFIED COPY OF ORDER**

STATE OF MISSOURI

} ea.

October Session of the October Adjourned

Term. 20 03

County of Boone

In the County Commission of said county, on the

14<sup>th</sup> day of October 20 03

the following, among other proceedings, were had, viz:

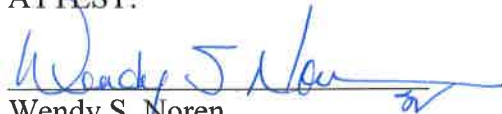
Now on this day the County Commission of the County of Boone does hereby approve the following budget revision:

DEPARTMENT ACCOUNT AND TITLE	AMOUNT DECREASE	AMOUNT INCREASE
1255-10100: Corrections – Salary and Wages	\$1,545.00	
1170-91301: Information Technology – Computer Equipment		\$1,545.00

Said budget revision is for the transfer of funds from Corrections to Information Technology to purchase a laptop computer for the Corrections Nurse.

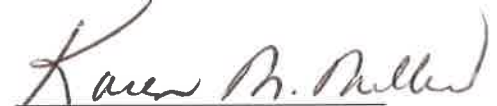
Done this 14<sup>th</sup> day of October, 2003.

ATTEST:



Wendy S. Noren  
Clerk of the County Commission

absent  
Keith Schnarre  
Presiding Commissioner



Karen M. Miller  
District I Commissioner



Skip Elkin  
District II Commissioner

# REQUEST FOR BUDGET REVISION

## BOONE COUNTY, MISSOURI RECEIVED

9/15/03

EFFECTIVE DATE

SEP 16 2003

FOR AUDITORS USE

478-2003

Department					Account					BOONE COUNTY AUDITOR		(Use whole \$ amounts)	
										Department Name	Account Name	Transfer From Decrease	Transfer To Increase
1	2	5	5		1	0	1	0	0	Sheriff-Corrections	<del>Medical Equipment</del> <i>Salary + Wages</i>	1545.	
1	1	7	0		9	1	3	0	1	IT	Computer Equipment		1545.

Describe the circumstances requiring this Budget Revision. Please address any budgetary impact for the remainder of this year and subsequent years. (Use an attachment if necessary): **Transfer of funds from Corrections - Medical Equipment to purchase laptop for use by Corrections Nurse in performance of her duties.**

*see attached bid. Laptop computer for Corrections nurse*

Do you anticipate that this Budget Revision will provide sufficient funds to complete the year?  YES  NO  
If not, please explain (use an attachment if necessary):

*Beverly Brown*  
Requesting Official

**TO BE COMPLETED BY AUDITOR'S OFFICE**

- A schedule of previously processed Budget Revisions/Amendments is attached.
- Unencumbered funds are available for this budget revision.
- Comments:

*[Signature]*  
Auditor's Office

*Absent*  
PRESIDING COMMISSIONER

*Karen B Miller*  
DISTRICT I COMMISSIONER

*Step Ed*  
DISTRICT II COMMISSIONER



State of MO - PVC-ST -- C203005001

Submitted Date: 29-AUG-03  
 Contact: Fisher, Rudy  
 Agency/Company: Boone County, MO - Information Technology  
 Phone: 573-886-4315  
 Fax: (f)fisher@boonecountymo.org  
 Bid #: 221932.1  
 WWT Quote #:

Grabowski, Lisa M  
 314-301-2883  
 800-775-5475  
 lisa.g@bowski@wwt.com  
 Grabowski, Lisa

World Wide Technology, Inc.  
 Veldon Parkway  
 Land Heights, MO 63043-3101

Part Number	Quantity	Customer Price	Extended Price	ATS (Days)
470045-648	1	\$1,478.73	\$1,478.73	14
DC916A	1	\$66.00	\$66.00	14
Total:			\$1,544.73	
0% Contract Fee (Minimum \$0.00):			\$0.00	
Shipping Fee:			\$0.00	
Grand Total:			\$1,544.73	

Compaq Evo Notebook N1020v - P4 2.4 GHz - I2 512 COMPAQ COMPUTER  
 KB - RAM 256 MB - HD 40 GB - CD-RW / DVD - Mdm  
 56 Kbps - LAN EN, Fast EN - Win XP Pro - 15" TFT  
 HP EXECUTIVE NYLON CARRY CASE

- ATS - Available to Ship
- Please call 888-234-8898
- Option #1 - Sales/Place Order
- Option #2 - Order Status/Return
- Option #3 - Service (report a trouble call)
- Option #4 - Hardware Maintenance Pricing

2004 DEPARTMENT BUDGET REPORT

100 GENERAL FUND

1255 CORRECTIONS

REPORT RUN DATE: 10/03/2003  
 REPORT RUN TIME: 8:57:21

RUN BY: ADKAREN

PAGE: 1

ACCOUNT DESCRIPTION	2001 ACTUAL	2002 ACTUAL	2003 BUDGET + REVISIONS	2003 ACTUAL TO DATE	2003 YTD %	2003 PROJECTED	2004 CORE REQUEST	2004 SUPPLEMENTAL REQUEST	%CHG FROM PY BUD
10100 SALARIES & WAGES	1,449,774	1,593,629	1,665,235	1,188,777	71	1,577,072	1,891,498	0	13
10110 OVERTIME	184,290	158,124	165,000	115,274	69	149,255	223,220	0	35
10115 SHIFT DIFFERENTIAL	22,412	23,618	26,580	15,135	56	21,999	27,348	0	2
10120 HOLIDAY WORKED	39,117	36,855	39,750	26,921	67	37,510	48,903	0	23
10200 FICA	127,417	135,184	145,087	99,339	68	132,019	167,609	0	15
10300 HEALTH INSURANCE	157,377	176,417	202,895	202,895	100	202,895	239,487	0	18
10325 DISABILITY INSURANCE	5,748	7,040	8,845	5,997	67	7,090	9,988	0	12
10350 LIFE INSURANCE	1,755	1,849	1,963	1,493	76	1,963	2,320	0	18
10375 DENTAL INSURANCE	15,470	15,470	16,362	16,362	100	16,362	18,742	0	14
10400 WORKERS COMP	50,359	62,652	64,297	63,583	98	56,589	81,468	0	26
10500 401(A) MATCH PLAN	18,530	21,177	34,807	15,020	43	21,420	34,807	0	0
10510 CERF-EMPLOYER PD CON	0	0	8,137	6,189	58	6,189	8,137	0	0
10600 UNEMPLOYMENT BENEFIT	809	9,085	8,989	8,988	99	8,988	0	0	100-
10000 PERSONAL SERVICES	2,073,058	2,241,100	2,387,947	1,764,575	73	2,239,151	2,753,527	0	15
TOTAL EXPENDITURES	2,073,058	2,241,100	2,387,947	1,764,573	73	2,239,151	2,753,527	0	15
CLASS 2 THRU 8 TOT	0	0	0	0	0	0	0	0	0

0-C

2,387,947. +  
 2,239,151. -  
 148,796. 1

10/3/2003

Y 2003  
 Budget Amendments/Revisions  
 Information Technology (1170)

Index #	Date Recd	Account	Account Name	\$Increase	\$Decrease	Reason/Justification	Comments
1	1/3/2003	10510 1123-86850	CERE-Employer Paid Contrib Emergency-Contingency	6,184	6,184	Move budget for additional 4% CERF from Contingency to individual dept class 1	
2	3/19/2003	91302 71101 23016	Computer Software Professional Services Magnetic Media	4,500	3,000 1,500	Officevision replacement	Account 91302 Computer Software - 2003 Budget \$0 YTD Actual \$0 Class 9 Fixed Asset Additions - 2003 Budget \$139,857 YTD Actual \$19,290.78 Account 71101 Professional Services - 2003 Budget \$18,000 YTD Actual \$0 Class 7 Contractual Services - 2003 Budget \$204,311 YTD Actual \$67,070.58 Account 23016 Magnetic Media - 2003 Budget \$17,450 YTD Actual \$92.48 Class 2 Materials & Supplies - 2003 Budget \$86,305 YTD Actual \$15,502.97
3	3/19/2003	1170-92301 1720-91400 1720-92400	Replacement Computer Hardware Auto/Trucks Replacmnt Auto/Trucks	3,700	3,500 200	Purchase computer for new full-time employee in Building Codes and upgrade monitors on 3 replacement units which will be used by GIS planners.	1170-92301 Replacmnt Computer Hardware - 2003 Budget \$96,873 YTD Actual \$25,719.43 1170-Class 9 Fixed Asset Additions - 2003 Budget \$144,357 YTD Actual \$25,719.43 1720-91400 Auto/Trucks - 2003 Budget \$24,800 YTD Actual \$21,228 1720-92400 Replacmnt Auto/Trucks - 2003 Budget \$49,600 YTD Actual \$44,084.96 Class 9 Fixed Asset Additions - 2003 Budget \$78,800 YTD Actual \$68,308.08
4	5/20/2003	91302 70050 71101	Computer Software Software Service Contract Professional Services	4,920	3,500 1,620	InfoPrint Designer software	Account 91302 Computer Software - 2003 Budget \$4,500 YTD Actual \$4,499.10 Class 9 Fixed Asset Additions - 2003 Budget \$148,057 YTD Actual \$61,413.31 Account 70050 Software Service Contract - 2003 Budget \$139,600 YTD Actual \$56,993.36 Account 71101 Professional Services - 2003 Budget \$15,000 YTD Actual \$285 Class 7 Contractual Services - 2003 Budget \$201,311 YTD Actual \$73,601.73
5	9/16/2003	91301 1255-10100	Computer Hardware Corrections-Salaries & Wages	1,545	1,545	Laptop computer for Corrections nurse	Dept 1255 class 1 projected savings = \$148,796

10/3/2003

FY 2003  
Budget Amendments/Revisions  
Corrections (1255)

Index #	Date Recd	Account	Account Name	\$Increase	\$Decrease	Reason/Justification	Comments
1	1/3/2003	10510 1123-86850	CERF-Employer Paid Contrib Emergency-Contingency	8,137	8,137	Move budget for additional 4% CERF from Contingency to individual dept class 1	
2	4/3/2003	23850 92400	Minor Equipment & Tools Replacement Auto/Trucks	83	83	Cover convenience package added to basic vehicle cost	
3	6/11/2003	85610 1123-86800	Hospital Costs Emergency	37,928	37,928	Cover inmate hospital costs through May	
4	6/19/2003	85620 1123-86800	Other Medical Emergency	11,630	11,630	Behavioral Health Concepts 2003-2004 contract	
5	7/10/2003	85610 1123-86800	Hospital Costs Emergency	7,649	7,649	Cover inmate hospital costs - June	
6	9/16/2003	1170-91301 10100	IT-Computer Hardware Salary & Wages	1,545	1,545	Laptop computer for Corrections nurse	Dept 1255 class 1 projected savings = \$148,796

# CERTIFIED COPY OF ORDER

STATE OF MISSOURI

} ea.

October Session of the October Adjourned

Term. 20 03

County of Boone

In the County Commission of said county, on the

14<sup>th</sup> day of October

20 03

the following, among other proceedings, were had, viz:

Now on this day the County Commission of the County of Boone does hereby approve the request to name two unnamed roadways, that are currently privately owned and maintained to *Forest Creek Drive* and *Forest Pointe Court*, as described in the attached documentation.

Done this 14<sup>th</sup> day of October, 2003.

ATTEST:

Wendy S. Noren  
Wendy S. Noren  
Clerk of the County Commission

absent

Keith Schnarre  
Presiding Commissioner

Karen M. Miller  
Karen M. Miller  
District I Commissioner

Skip Elkin  
Skip Elkin  
District II Commissioner

**Request to name two unnamed roadways that are currently private, non-county maintained roads to FOREST CREEK DRIVE and FOREST POINTE COURT. Said roads being in Section 18, Township 47 North, Range 12 West as shown on survey recorded in book 1157 page 986 of Boone County Records.**

**FOREST CREEK DRIVE: Beginning on the west side of Tomlin Hill Road approximately 400 feet south of the intersections of Tomlin Hill Road and Fox Lane and running in a southwesterly direction for approximately 2000 feet. This proposed drive is also shown as Tract 14 on survey recorded in book 1157 page 986 of Boone County Records.**

**FOREST POINTE COURT: Beginning on the northwest side of Forest Creek Drive approximately 1600 feet southwest of the intersection of Forest Creek Drive and Tomlin Hill Road and running in a westerly direction for approximately 1200 feet. This proposed court is also shown as an ingress/egress easement on survey recorded in book 1157 page 986 of Boone County Records.**





## PETITION TO NAME A ROAD IN BOONE COUNTY

We the undersigned property owners who front on a private unnamed road request that the Boone County Commission name this road to

Forest Creek & Forest Pointe.

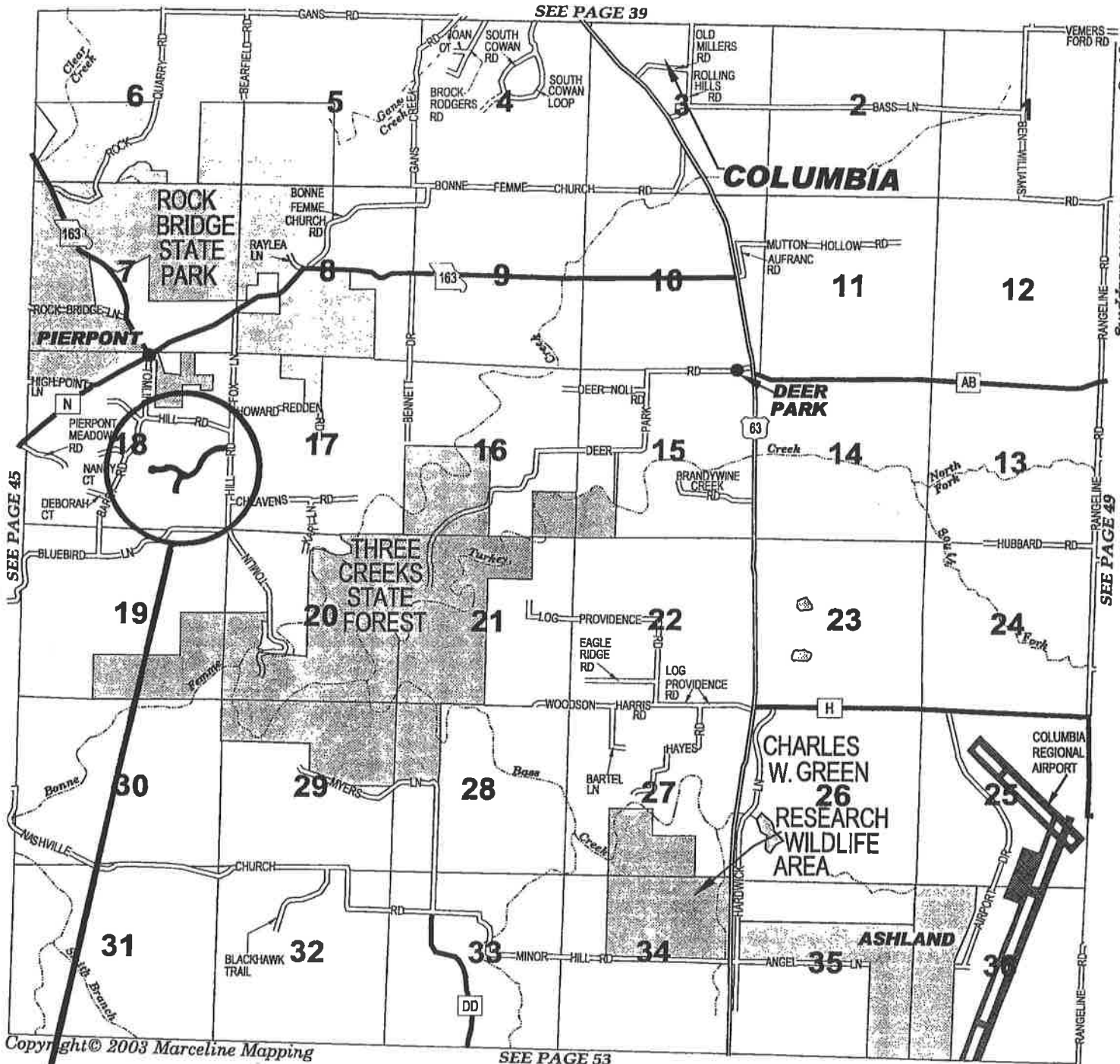
Said road is located in Section \_\_\_ Township \_\_\_ North, Range \_\_\_ West

Print Name Property owner(s)	Signature	Address & Telephone	Date
John Page Jr.		P.O. Box 7563 Col., MO 65203	8/13/03
Lisa Page		446-7582	CELL: 864-1444

Please return to:  
Boone County Planning & Building Inspections 886-4330  
Boone County Government Center  
801 E. Walnut Rm 210  
Columbia, MO 65201

# TOWNSHIP 47N • RANGE 12W

NORTHEAST PART ROCK BRIDGE  
NORTHWEST PART THREE CREEKS



FOREST CREEK DRIVE  
FOREST POINTE COURT

**A SURVEY FOR  
REVOCABLE TRUST OF  
JAMES C. BUTCHER**  
A TRACT OF LAND LOCATED IN THE SOUTHEAST  
QUARTER OF SECTION 18, 1876, 67th W.  
BOONE COUNTY, MISSOURI  
JUNE, 1915

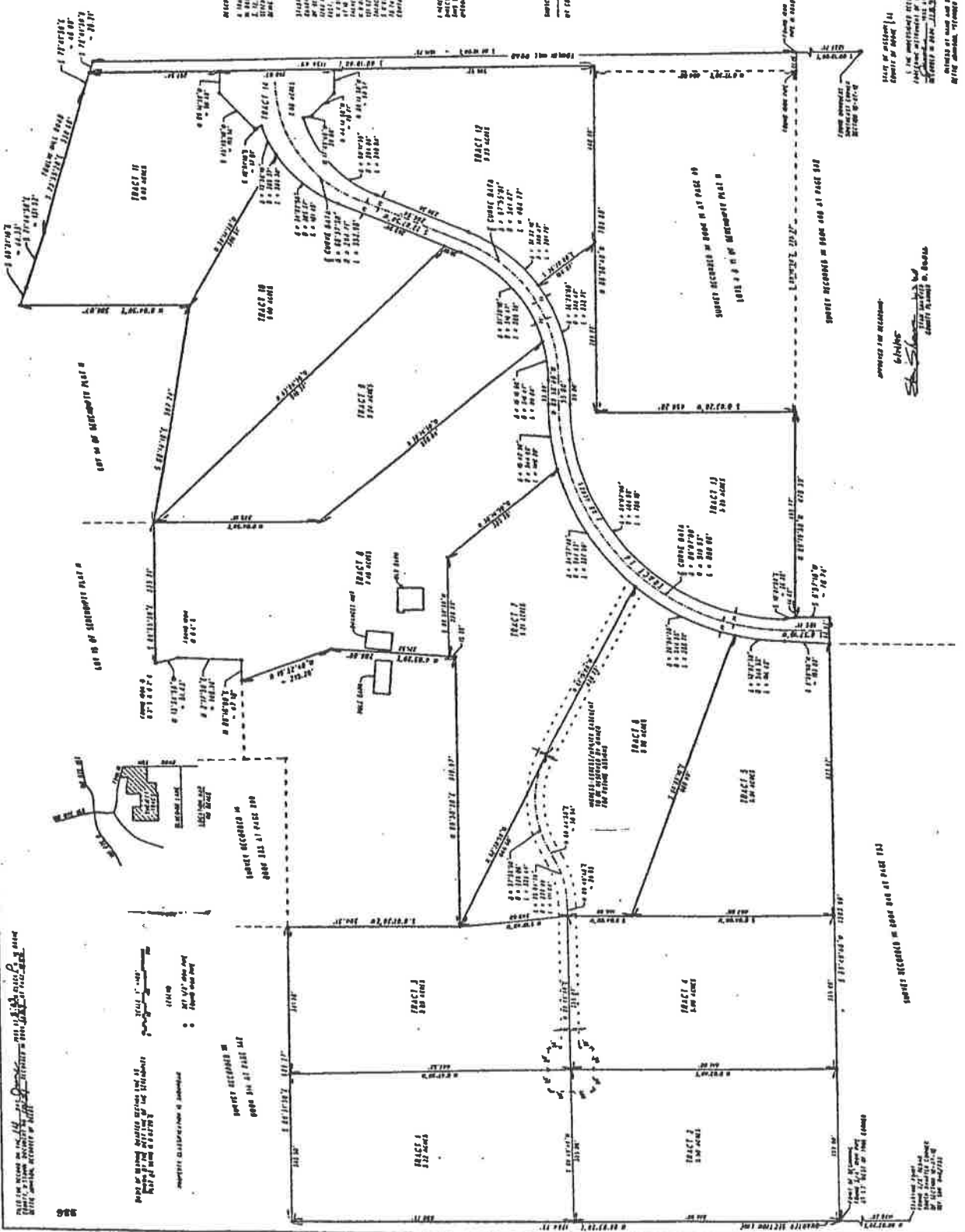
SECTION 18

BEING THE TRACT OF LAND...  
SECTION 18, 1876, 67th W.  
BOONE COUNTY, MISSOURI

THE ABOVE DESCRIBED TRACT...  
SECTION 18, 1876, 67th W.  
BOONE COUNTY, MISSOURI

*James C. Butcher*  
1915

*James C. Butcher*  
1915



SECTION 18, 1876, 67th W.  
BOONE COUNTY, MISSOURI

SECTION 18, 1876, 67th W.  
BOONE COUNTY, MISSOURI

SECTION 18, 1876, 67th W.  
BOONE COUNTY, MISSOURI

SECTION 18, 1876, 67th W.  
BOONE COUNTY, MISSOURI

SECTION 18, 1876, 67th W.  
BOONE COUNTY, MISSOURI

SECTION 18, 1876, 67th W.  
BOONE COUNTY, MISSOURI

SECTION 18, 1876, 67th W.  
BOONE COUNTY, MISSOURI

SECTION 18, 1876, 67th W.  
BOONE COUNTY, MISSOURI

SECTION 18, 1876, 67th W.  
BOONE COUNTY, MISSOURI

SECTION 18, 1876, 67th W.  
BOONE COUNTY, MISSOURI

SECTION 18, 1876, 67th W.  
BOONE COUNTY, MISSOURI

SECTION 18, 1876, 67th W.  
BOONE COUNTY, MISSOURI

SECTION 18, 1876, 67th W.  
BOONE COUNTY, MISSOURI

SECTION 18, 1876, 67th W.  
BOONE COUNTY, MISSOURI

SECTION 18, 1876, 67th W.  
BOONE COUNTY, MISSOURI

SECTION 18, 1876, 67th W.  
BOONE COUNTY, MISSOURI

SECTION 18, 1876, 67th W.  
BOONE COUNTY, MISSOURI

SECTION 18, 1876, 67th W.  
BOONE COUNTY, MISSOURI

SECTION 18, 1876, 67th W.  
BOONE COUNTY, MISSOURI

SECTION 18, 1876, 67th W.  
BOONE COUNTY, MISSOURI

SECTION 18, 1876, 67th W.  
BOONE COUNTY, MISSOURI

SECTION 18, 1876, 67th W.  
BOONE COUNTY, MISSOURI

SECTION 18, 1876, 67th W.  
BOONE COUNTY, MISSOURI

SECTION 18, 1876, 67th W.  
BOONE COUNTY, MISSOURI

SECTION 18, 1876, 67th W.  
BOONE COUNTY, MISSOURI

SECTION 18, 1876, 67th W.  
BOONE COUNTY, MISSOURI

SECTION 18, 1876, 67th W.  
BOONE COUNTY, MISSOURI

SECTION 18, 1876, 67th W.  
BOONE COUNTY, MISSOURI

SECTION 18, 1876, 67th W.  
BOONE COUNTY, MISSOURI

SECTION 18, 1876, 67th W.  
BOONE COUNTY, MISSOURI

SECTION 18, 1876, 67th W.  
BOONE COUNTY, MISSOURI

SECTION 18, 1876, 67th W.  
BOONE COUNTY, MISSOURI

SECTION 18, 1876, 67th W.  
BOONE COUNTY, MISSOURI

SECTION 18, 1876, 67th W.  
BOONE COUNTY, MISSOURI

SECTION 18, 1876, 67th W.  
BOONE COUNTY, MISSOURI

SECTION 18, 1876, 67th W.  
BOONE COUNTY, MISSOURI

SECTION 18, 1876, 67th W.  
BOONE COUNTY, MISSOURI

SECTION 18, 1876, 67th W.  
BOONE COUNTY, MISSOURI

SECTION 18, 1876, 67th W.  
BOONE COUNTY, MISSOURI

SECTION 18, 1876, 67th W.  
BOONE COUNTY, MISSOURI

SECTION 18, 1876, 67th W.  
BOONE COUNTY, MISSOURI

SECTION 18, 1876, 67th W.  
BOONE COUNTY, MISSOURI

SECTION 18, 1876, 67th W.  
BOONE COUNTY, MISSOURI

SECTION 18, 1876, 67th W.  
BOONE COUNTY, MISSOURI

SECTION 18, 1876, 67th W.  
BOONE COUNTY, MISSOURI

SECTION 18, 1876, 67th W.  
BOONE COUNTY, MISSOURI

SECTION 18, 1876, 67th W.  
BOONE COUNTY, MISSOURI

SECTION 18, 1876, 67th W.  
BOONE COUNTY, MISSOURI

SECTION 18, 1876, 67th W.  
BOONE COUNTY, MISSOURI

SECTION 18, 1876, 67th W.  
BOONE COUNTY, MISSOURI

SECTION 18, 1876, 67th W.  
BOONE COUNTY, MISSOURI

SECTION 18, 1876, 67th W.  
BOONE COUNTY, MISSOURI

# CERTIFIED COPY OF ORDER

STATE OF MISSOURI

} ea.

October Session of the October Adjourned

Term. 20 03

County of Boone

In the County Commission of said county, on the

14<sup>th</sup> day of October 20 03

the following, among other proceedings, were had, viz:

Now on this day the County Commission of the County of Boone does hereby authorize the use of the Commission Chambers of the Roger B. Wilson Boone County Government Center on Monday, November 3, 2003 from 6:00 to 9:00 p.m. for the Progressive Voter's Caucus.

Done this 14<sup>th</sup> day of October, 2003.

absent

Keith Schnarre  
Presiding Commissioner

ATTEST:

Wendy S. Noren

Wendy S. Noren  
Clerk of the County Commission

Karen M. Miller

Karen M. Miller  
District I Commissioner

Skip Elkin

Skip Elkin  
District II Commissioner

Keith Schnarre, Presiding Commissioner  
Karen M. Miller, District I Commissioner  
Skip Elkin, District II Commissioner



Roger B. Wilson  
Boone County Government Center  
801 East Walnut Room 245  
Columbia, MO 65201-7732  
573-886-4305 • FAX 573-886-4311

# Boone County Commission

480-2003

*Agenda  
please  
come*

## ROGER B. WILSON BOONE COUNTY GOVERNMENT CENTER REQUEST TO USE CONFERENCE ROOM

Today's Date 10/7/2003 Date of Event 11/3/2003 Hours Needed 6 pm - 9 pm

Organization Progressive Voter's Caucus

Contact Keith Brekhus Telephone # (573) 875-4295 882-3224

Substitute Mark Haim Telephone # (573) 875-0539

### TYPE OF EVENT

This will be an ad-hoc coalition of progressive voters (Democrats, Greens, Independents, etc.) gathering to discuss possible electoral strategies for 2004.

This is not a partisan organization nor will it endorse candidates, but rather it will be an open forum for coalition-building and strategizing.

Room requested:

Chambers \_\_\_\_\_ Room 208  
\_\_\_\_\_ Room 139 \_\_\_\_\_ Room 220