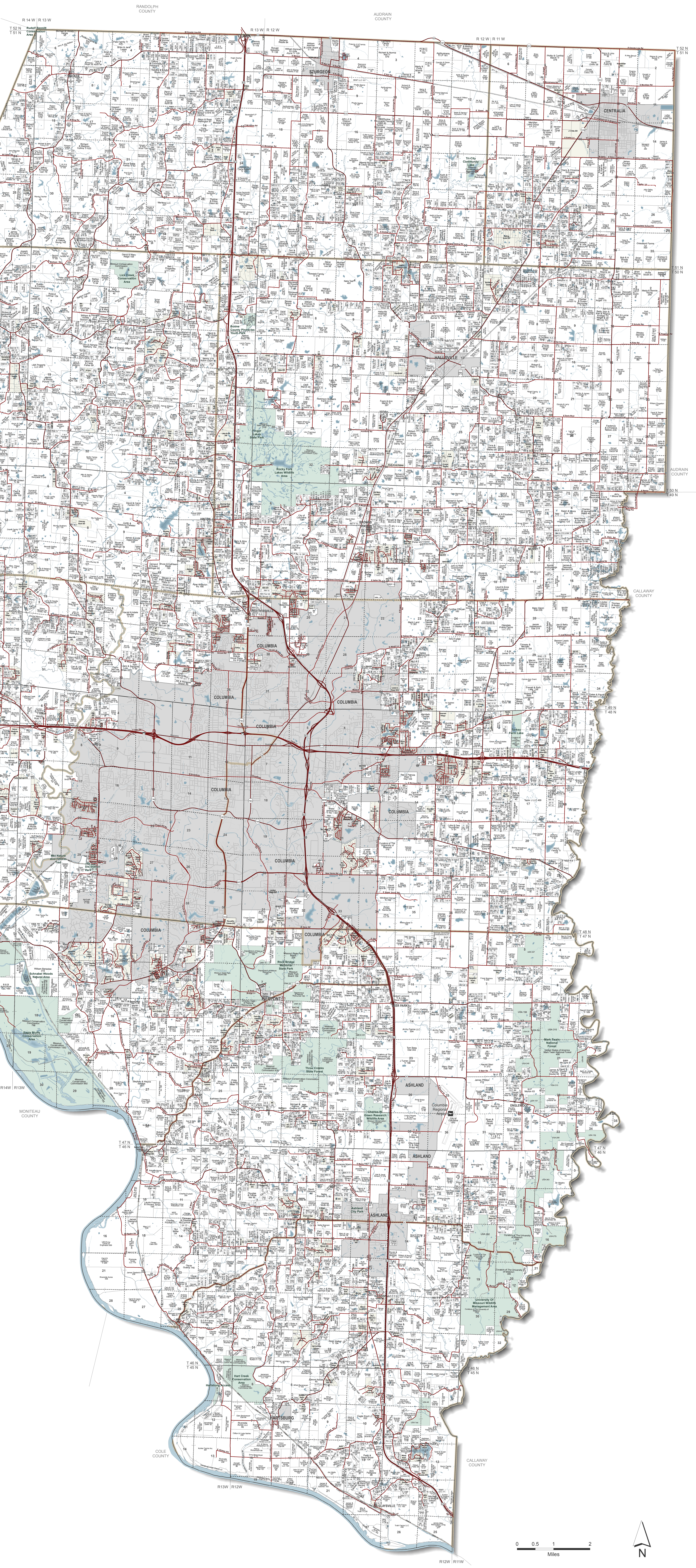


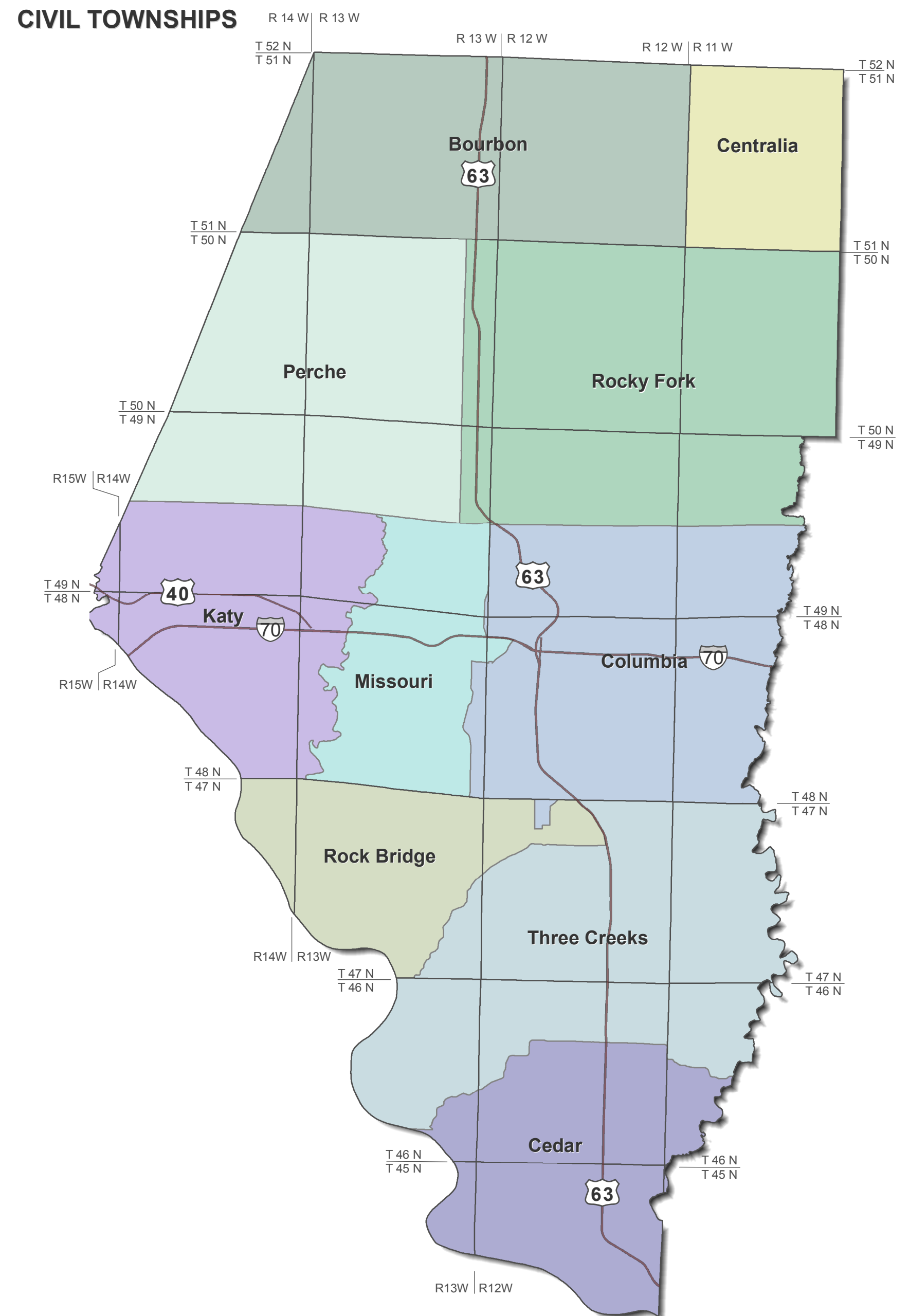
2014 BOONE COUNTY OWNERSHIP MAP



- MAP LEGEND**
- Railroad
 - Federal and State Highway
 - Roads
 - Private Road
 - Trails
 - Lake, Pond, or Reservoir
 - Rivers, Streams, or Creeks
 - Property Boundary
 - Ownership Tie (attach properties together)
 - Subdivisions (SD)
 - Unincorporated Municipality
 - City, Town, or Village Limits
 - Section Line
 - Township Boundary
 - Civil Township Boundary
 - State Parks, National Forests, or Government Owned Land
 - Church
 - Airport

MAP NOTATIONS
 This Plat Map shows owner and acreage information for properties greater than 5 acres. Properties that are smaller than 5 acres and/or located in Subdivisions do not display owner and acreage information.

ROAD NAME ABBREVIATIONS	OWNERSHIP ABBREVIATIONS
AV - Avenue	ASSOC - Association
BLVD - Boulevard	CORP - Corporation
CL - Circle	BD - Beneficiary Deed
CT - Court	ETAL - And Others
HWY - Highway	EST - Estate
LN - Lane	LE - Life Estate
PKWY - Parkway	FDT - Foundation
PL - Place	FT - Family Trust
RD - Road	IRT - Irrevocable Trust
ST - Street	LE - Life Estate
TER - Terrace	LT - Living Trust
TR - Trail	PTNS - Partner(s)
WY - Way	RT - Revocable Trust
	SD - Subdivision
	SIL - Small Lots/Parcels
	TR - Trust or Trustee



2014 BOONE COUNTY OWNERSHIP MAP

Office Of The Boone County Assessor
 801 E Walnut Rm 143, Columbia, MO, 65201
 Phone: (573) 886-4270 * Fax: (573) 886-4254

PLAT INFORMATION
 The information contained on this map is also found in the Plat Book that is published by the Office of the Boone County Assessor as a guide to the community.

The Plat Book and Boone County property information is available online and free to the public by browsing to the Assessor's website at showmeboone.com.

DATE: 4/15/2014

Developed By:
 Boone County GIS Department
 801 E Walnut, Room 220
 Columbia, MO 65201-4890
 Phone: (573) 886-4325
 Fax: (573) 886-4322
www.showmeboone.com

Assessor Dataset Disclaimer:
 These maps were prepared for the inventory of real property based on the utilization of deeds, plans, and/or supportive data. In addition, map files are frequently changed to reflect changes in boundaries, lot lines and other geographic features resulting from changes in ownership, development, and other causes. The existence, dimension, and location of features as well as other information, should not be relied upon for any purpose without actual field verification. The County of Boone makes no warranty of any kind concerning the completeness or accuracy of information contained on these maps and assumes no liability or responsibility for the use or reuse of these maps by persons not affiliated with Boone County. Use of these maps by any person not affiliated with Boone County constitutes agreement by the user to assume full liability and responsibility for the verification of the accuracy of information shown on these maps.

The following map layer sources were utilized in the creation of the ownership map: Boone County Assessor's Office and GIS Department; parcel boundaries, ownership, elevation, hydrology, and various reference layers & City of Columbia - hydrology, roads, & parks layers.

