

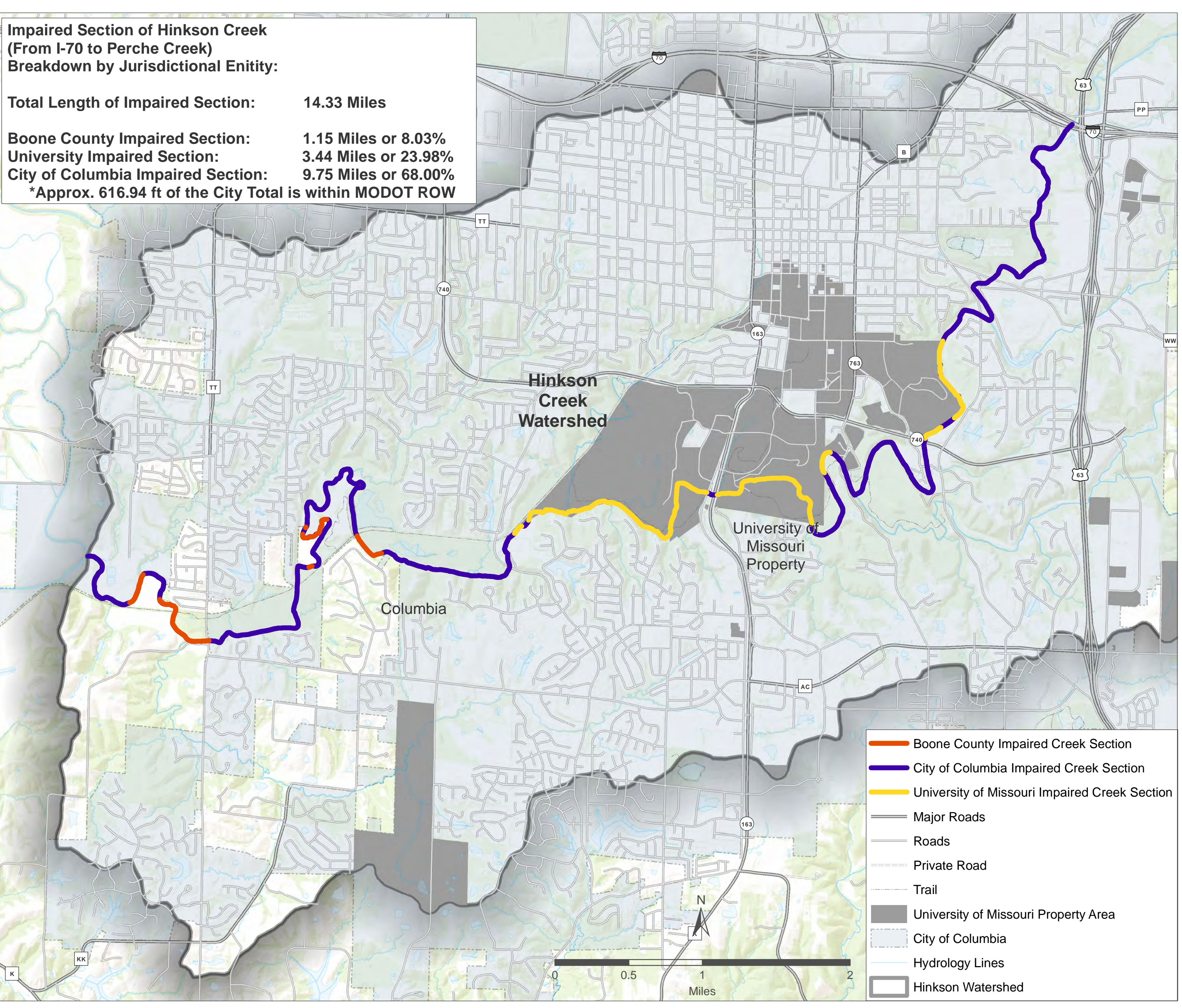


Hinkson Creek Watershed Impervious Surfaces Analysis Breakdown by Jurisdictional Entity

**Impaired Section of Hinkson Creek
(From I-70 to Perche Creek)
Breakdown by Jurisdictional Entity:**

Total Length of Impaired Section: 14.33 Miles

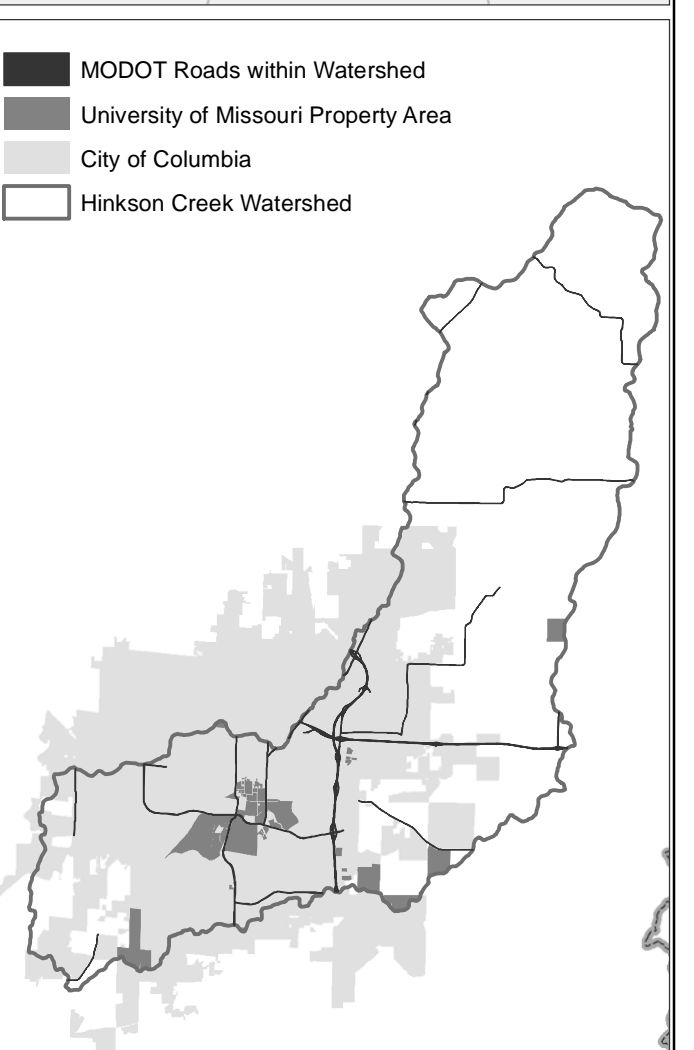
Boone County Impaired Section: 1.15 Miles or 8.03%
University Impaired Section: 3.44 Miles or 23.98%
City of Columbia Impaired Section: 9.75 Miles or 68.00%
 *Approx. 616.94 ft of the City Total is within MODOT ROW



Boone County Impaired Creek Section
 City of Columbia Impaired Creek Section
 University of Missouri Impaired Creek Section
 Major Roads
 Roads
 Private Road
 Trail
 University of Missouri Property Area
 City of Columbia
 Hydrology Lines
 Hinkson Watershed

Boone County Impervious Surfaces
 City of Columbia Impervious Surfaces
 MODOT Impervious Surfaces
 University of Missouri Impervious Surfaces
 University of Missouri Property Area
 City Boundary
 Hydrology

Boone County, Missouri



NOTES:
 Areas designated as University of Missouri were derived from the Boone County Assessor's Parcel Polygon database, based on designated owner.

Calculations and take-offs are derived from best available data sources at time of map production. These figures are initial calculations created for planning purposes and are NOT final calculations.

Date: 12/11/2012

Assessor Dataset Disclaimer:
 These maps were prepared for the inventory of real property based on the utilization of deeds, plans, and/or supportive data. In addition, map files are frequently changed to reflect changes in boundaries, lot lines and other geographic features resulting from changes in ownership, development, and other causes. The existence, dimension, and location of features, as well as other information, should not be relied upon for any purpose without actual field verification. The County of Boone makes no warranty of any kind concerning the completeness or accuracy of information contained on these maps and assumes no liability or responsibility for the use or reuse of these maps by persons not affiliated with Boone County. Use of these maps by any person not affiliated with Boone County constitute agreement by the user to assume full liability and responsibility for the verification of the accuracy of information shown on these maps.

Sources Citation:
 Boone County Assessor-2009 Structures Source
 Boone County Assessor-2009 Parcel Polygon Source
 City Polygon Source
 County Polygon Source
 Boone County Resource Management-Hinkson Watershed Impervious Surfaces Polygon Source
 Boone County GIS-Surrounding County Polygon Source
 Boone County/ City of Columbia-Roads Centerline Line Source
 Boone County Assessor/ City of Columbia Public Works-2009 Hydrology Drain Line Source
 2009 Hydrology Waterbody Polygon Source
 2009 Elevation Data
 City of Columbia Public Works-2007 Structures Polygon Source
 Hinkson Creek Watershed Impervious Surfaces Polygon Source
 USDA-Watershed Polygon Source (10-digit)

Developed By:
 Boone County GIS Department
 801 E. Walnut, Room 220
 Columbia, MO 65201-4890
 Phone: (573) 886-4325
 Fax: (573) 886-4322
 www.showmeboone.com

Impaired Surface Area Within Hinkson Creek Watershed Breakdown by Jurisdictional Entity:	
Total Hinkson Watershed Area:	57,473.96 Acres
Total Impervious Surface Area:	6,034.52 Acres (10.5% of Watershed Area)
MODOT Impervious Surface Area:	311.96 Acres or 5.17% of ISA
University Impervious Surface Area:	405.72 Acres or 6.72% of ISA
Boone County Impervious Surface Area:	957.84 Acres or 15.87% of ISA
City of Columbia Impervious Surface Area:	4,359.00 Acres or 72.23% of ISA